

**1B2P 50 & 57 MAISONETTE - Semi-Detached (4 Block) -** Type P1 - 1B2P 50 Maisonette (GF) - 1 Bedroom 2 Person Maisonette (50m<sup>2</sup>)  
 Type P2 - 1B2P 57 Maisonette (FF) - 1 Bedroom 2 Person Maisonette (57m<sup>2</sup>)



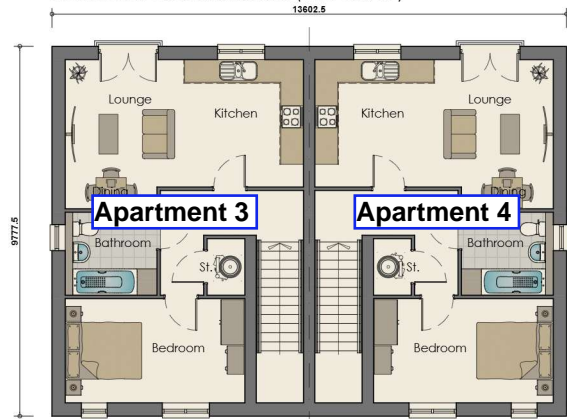
Type P1 & P2  
**Front Elevation - 1B2P Maisonette 50 & 57**  
 1 Bedroom 2 Person Maisonette (50m<sup>2</sup> & 57m<sup>2</sup>)



Type P1 & P2  
**Rear Elevation - 1B2P Maisonette 50 & 57**  
 1 Bedroom 2 Person Maisonette (50m<sup>2</sup> & 57m<sup>2</sup>)

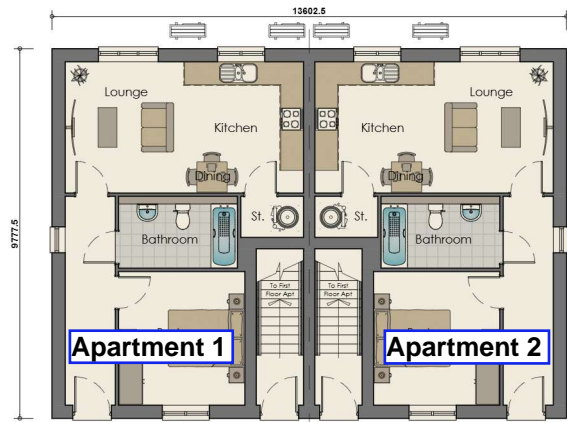
NDSS Compliance Schedule				
Type:P1   1 Bed 2 Person Maisonette (1 Storey) - Ground Floor				
<b>Gross Internal Area:</b>				
NDSS GIA:		Actual GIA:		
50m <sup>2</sup>		50m <sup>2</sup>		
<b>Room Sizes:</b>				
Name	NDSS Width:	Actual Width:	NDSS Area:	Actual Area:
Bedroom 1	2.75m x 2.75m	2.75m x 4.75m	11.5m <sup>2</sup>	11.7m <sup>2</sup>
<b>Storage:</b>				
Name	Area:			
Store	1.6m <sup>2</sup>			
<b>Total:</b>	<b>1.6m<sup>2</sup></b>			
<b>NDSS:</b>	<b>1.5m<sup>2</sup></b>			

NDSS Compliance Schedule				
Type:P2   1 Bed 2 Person Maisonette (1 Storey) - First Floor				
<b>Gross Internal Area:</b>				
NDSS GIA:		Actual GIA:		
50m <sup>2</sup>		57m <sup>2</sup>		
<b>Room Sizes:</b>				
Name	NDSS Width:	Actual Width:	NDSS Area:	Actual Area:
Bedroom 1	2.75m x 2.75m	3.3m x 3.5m	11.5m <sup>2</sup>	13.1m <sup>2</sup>
<b>Storage:</b>				
Name	Area:			
Store	1.5m <sup>2</sup>			
<b>Total:</b>	<b>1.5m<sup>2</sup></b>			
<b>NDSS:</b>	<b>1.5m<sup>2</sup></b>			



**Marley House - First Floor**

1 Bedroom 2 Person Maisonette (57m<sup>2</sup>)



**Marley House - Ground Floor**

1 Bedroom 2 Person Maisonette (50m<sup>2</sup>)



Type P1 & P2  
**Side Elevation - 1B2P Maisonette 50 & 57**  
 1 Bedroom 2 Person Maisonette (50m<sup>2</sup> & 57m<sup>2</sup>)



Type P1 & P2  
**Side Elevation - 1B2P Maisonette 50 & 57**  
 1 Bedroom 2 Person Maisonette (50m<sup>2</sup> & 57m<sup>2</sup>)

Plot No's 01-04, 28-31 & 38-41

REV	DATE	DRAWN	DESCRIPTION
A	JULY 25	SHW	UPDATED TO LATEST LAYOUT

TITLE:		<b>TYPE P1 &amp; P2</b>	
1B2P MAISONETTE GF (50m <sup>2</sup> ) 1B2P MAISONETTE FF (57m <sup>2</sup> )		FLOOR PLANS & ELEVATIONS	
 Breck Homes 20 Sceptre Court Bamber Bridge Preston PR5 6AW Tel: 01383 687 010 Fax: 01383 687 010 www.breck.co.uk/homes hello@breck.co.uk			
PROJECT: RUSHTON AVE, BRADFORD			
DATE:	SCALE:	JOB REF:	DRAWING NUMBER:
JAN 25	1:100	-	P11 Rushton Ave / Type P1 & P2
	@ A2		1B2P 50 & 1B2P 57 Maisonettes
			REV: A