

1B2P 50 & 57 MAISONETTE - Semi-Detached (4 Block) - Type P1 - 1B2P 50 Maisonette (GF) - 1 Bedroom 2 Person Maisonette (50m²)
 Type P2 - 1B2P 57 Maisonette (FF) - 1 Bedroom 2 Person Maisonette (57m²)



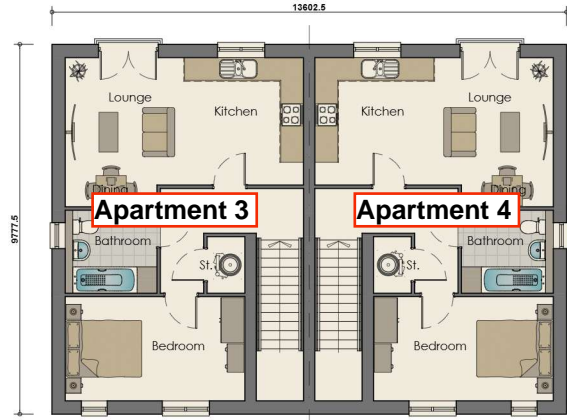
Type P1 & P2
Front Elevation - 1B2P Maisonette 50 & 57
 1 Bedroom 2 Person Maisonette (50m² & 57m²)



Type P1 & P2
Rear Elevation - 1B2P Maisonette 50 & 57
 1 Bedroom 2 Person Maisonette (50m² & 57m²)

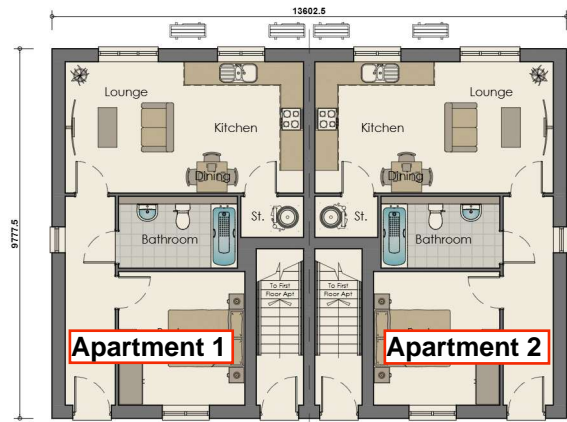
NDSS Compliance Schedule					
Type:P1 1 Bed 2 Person Maisonette (1 Storey) - Ground Floor					
Gross Internal Area:					
NDSS GIA:			Actual GIA:		
50m ²			50m ²		
Room Sizes:					
Name	NDSS Width:	Actual Width:	NDSS Area:	Actual Area:	
Bedroom 1	2.75m x 2.75m	2.75m x 4.75m	11.5m ²	11.7m ²	
Storage:					
Name	Area:				
Store	1.6m ²				
Total:	1.6m ²				
NDSS:	1.5m ²				

NDSS Compliance Schedule					
Type:P2 1 Bed 2 Person Maisonette (1 Storey) - First Floor					
Gross Internal Area:					
NDSS GIA:			Actual GIA:		
50m ²			57m ²		
Room Sizes:					
Name	NDSS Width:	Actual Width:	NDSS Area:	Actual Area:	
Bedroom 1	2.75m x 2.75m	3.3m x 3.5m	11.5m ²	13.1m ²	
Storage:					
Name	Area:				
Store	1.5m ²				
Total:	1.5m ²				
NDSS:	1.5m ²				



Caxton House - First Floor

1 Bedroom 2 Person Maisonette (57m²)



Caxton House - Ground Floor

1 Bedroom 2 Person Maisonette (50m²)



Type P1 & P2
Side Elevation - 1B2P Maisonette 50 & 57
 1 Bedroom 2 Person Maisonette (50m² & 57m²)



Type P1 & P2
Side Elevation - 1B2P Maisonette 50 & 57
 1 Bedroom 2 Person Maisonette (50m² & 57m²)

Plot No's 01-04, 28-31 & 38-41

REV	DATE	DRAWN	DESCRIPTION
A	JULY 25	SHW	UPDATED TO LATEST LAYOUT

TITLE:		TYPE P1 & P2	
1B2P MAISONETTE GF (50m ²) 1B2P MAISONETTE FF (57m ²)		FLOOR PLANS & ELEVATIONS	
Breck Homes 20 Sceptre Court Bamber Bridge Preston PR5 6AW Tel: 01323 687 010 Fax: 01323 687 010 www.breck.co.uk/homes hello@breck.co.uk			
PROJECT:			
RUSHTON AVE, BRADFORD			
DATE:	SCALE:	JOB REF:	DRAWING NUMBER:
JAN 25	1:100 @ A2	-	P11 Rushton Ave / Type P1 & P2 1B2P 50 & 1B2P 57 Maisonettes
REV:			A