



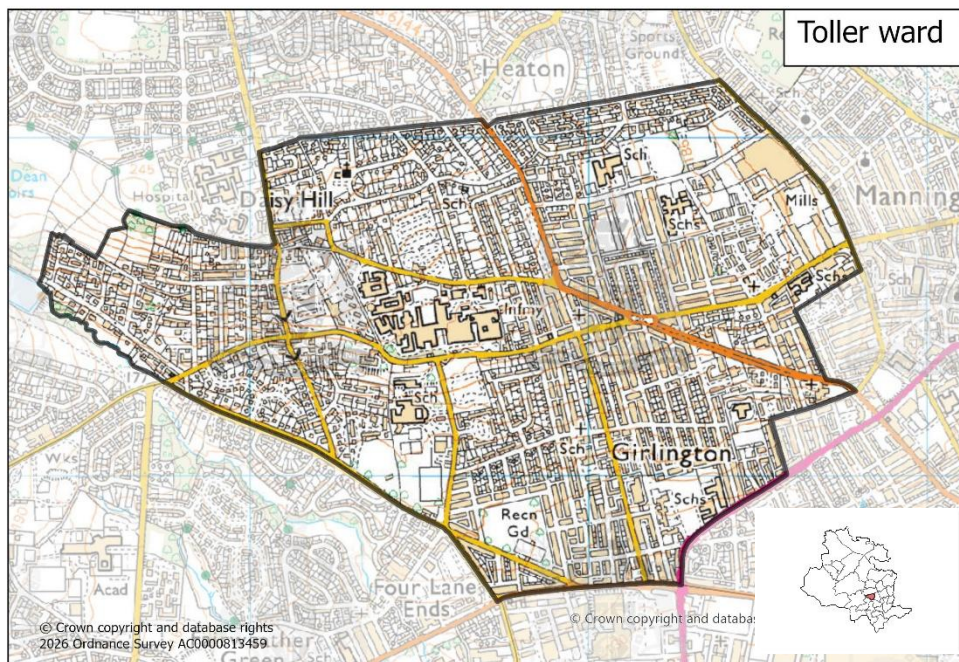
Ward Profile – Toller ward

At a glance:

- Toller ward has a total population of 21,440 people
- 25.2% of the population is under-16
- 74.8% of people living in Toller ward identified as Pakistani
- 48.8% of households live in terraced housing
- 80.4% of residents described their health as very good or good
- All 10 neighbourhoods in Toller ward are ranked as deprived

Introduction

Toller ward is one of six wards in the Bradford West area. Toller is primarily residential, but includes the Bradford Royal Infirmary and the important city landmark of Listers Mill. There were no changes to the ward boundary following the Local Government Boundary Commission review.



Population

The mid-2024 aggregated population estimates show that 21,440 people live in Toller ward. 25.2% of the population is under 16. Little Horton ward has the highest percentage (28.9%) and Ilkley and Addingham ward has the lowest percentage (13.9%).

66.6% of the ward population is aged between 16 and 64. Ilkley and Addingham ward has the lowest percentage of the working age population with 51.7% and City ward has the highest percentage with 71.1% - this probably reflects the high numbers of students and young people living in the areas close to Bradford College and Bradford University.

7.5% of the ward population is aged 65 to 84. Ilkley and Addingham ward has the highest percentage (27.2%). City ward has the lowest percentage with 5.6%

0.7% of the ward population is aged 85 and over. Little Horton ward has the lowest percentage with 0.4% and Ilkley and Addingham ward has the highest percentage with 7.2%.

Ethnicity and religion

Ethnicity	Percentage
White	10.7%
Multiple/mixed ethnic groups	2.0%
Indian	3.2%
Pakistani	74.8%
Bangladeshi	1.6%
Other Asian	2.9%
Black	1.6%
Other ethnic group	3.2%

Toller ward has the lowest percentage of the White population (10.7%) and the highest percentage of the Pakistani population (74.8%). Wharfedale ward has the highest percentage of the White population (96.4%) and the lowest percentage of the Pakistani population (0.5%).

61.1% of the Bradford District population identified as White, 25.5% identified as Pakistani, 2.7% identified as Mixed, 2.6% identified as Indian, 2.3% identified as Bangladeshi and 2% identified as Black

Religion	Percentage
Christian	9.1%
Buddhist	0.1%
Hindu	0.3%
Jewish	0.0%
Muslim	79.9%
Sikh	0.9%
Other religion	0.2%
No religion	4.3%
Religion not stated	5.1%

The question about religion in the 2021 census was voluntary and 5.1% of the Toller ward population chose not to answer.

Bradford Moor ward has the lowest percentage of Christians (8.5%) and Ilkley and Addingham ward has the highest percentage (55%). Wharfedale ward has

the lowest percentage of Muslims (0.7%) and Toller ward has the highest percentage (79.9%).

Toller ward has the lowest percentage of people who do not have a religion (4.3%) and Worth Valley ward has the highest percentage (45.1%).

33.4% of the Bradford District population identified as Christian, 30.5% identified as Muslim. 28.2% of people stated that they had no religion and 5.5% chose not to answer the question, which was voluntary

Household language

49.4% of Toller ward households have adults who all speak English as their main language (the lowest percentage in the District), 33.1% of households have at least one adult who speaks English, 3.5% have one child aged 3 to 15, but no adults who speak English and 13.9% of households have no one with English as a main language.

83.1% of households in Bradford District have adults who all speak English as their main language, 8.9% have at least one adult who speaks English, 1.8% have at least one child aged 3 to 15, but no adults who speak English and 6.1% of households have no one with English as their main language.

Housing

There are 5,634 households in Toller ward. 11.1% of households live in detached housing, 22.9% of the households live in semi-detached houses or bungalows, 48.8% of households live in terraced houses and 11.3% live in flats.

City ward has the lowest percentages of detached and semi-detached homes. Baildon ward has the lowest percentages of terraced homes. Keighley East ward has the lowest percentages of flats.

City ward has the highest percentages of flats. Wharfedale ward has the highest percentage of detached properties, Royds ward has the highest percentage of semi-detached homes and Bradford Moor ward has the highest percentage of terraced properties.

There are 209,867 households in Bradford District. 36.7% of households live in semi-detached houses or bungalows, 33% live in terraced housing, 14.7% live in detached houses or bungalows and 11.6% live in flats or tenements.

58.4% of Toller ward households live in owner-occupied housing, 31.8% of households rent from a private landlord and 9.1% are rented from a social landlord.

Ilkley and Addingham ward has the highest percentage of owner-occupiers (79.8%). City ward has the highest percentage of households renting from private landlords (52.1%) and Holme Wood and Bierley ward has the highest percentage of households renting from social landlords (35.5%).

62.2% of Bradford households live in owner-occupied homes (homes (either owned outright, with a mortgage or shared ownership), 23% rent from a private landlord and 14.6% rent from a social landlord.

16.8% of households in Toller ward are living in overcrowded homes, this is higher than the District average of 5.5%. Ilkley and Addingham ward has the lowest rate at 0.8% and Toller ward has the highest rate at 16.8%

Employment

The top three industries employing people living in Toller ward are: wholesale and retail trade (21%), human health and social work activities (16.2%) and education (10.8%).

15.6% of employees in Toller ward work in elementary occupations, 15.4% work in professional occupations and 14.9% work as process, plant and machine operatives.

The top three industries employing people living in Bradford District are: wholesale and retail trade (17.7%), human health and social work activities (15.4%) and education (10.6%)

17.1% of employees in Bradford District work in professional occupations, 12% work in elementary occupations and 11.5% work in associate professional and technical occupations.

Health and disability

The 2021 census asked people about their health, whether they have any disabilities and if they act as unpaid carers for anyone else.

In Toller ward 80.4% described their health as 'Good or very good' and 6.8% described their health as 'Bad or very bad'. Wharfedale ward had the highest percentage of people who

described their health as 'Good or very good' (85.8%). Holme Wood and Bierley ward had the highest percentage of people who described their health as 'Bad or very bad' (7.5%).

80.6% of Bradford District residents described their health as 'Good or very good' and 6% described their health as 'Bad or very bad'

The census asked people whether they had any physical or mental health conditions or illnesses lasting or expected to last 12 months or more. It also asked whether any of these conditions or illnesses reduced the respondent's ability to carry out day-to-day activities.

In Toller ward 85.2% responded that they do not have any illnesses or disabilities which limit their day-to-day activities. 8.2% consider that their activities are limited a lot and 6.6% feel that their activities are limited a little. Wharfedale ward had the highest percentage of people who do not have any illnesses or disabilities which limit their day-to-day activities (85.7%). Holme Wood and Bierley ward has the highest percentage of people who consider that their activities are limited a lot (9.9%) and Wyke ward has the highest percentage who feel that their activities are limited a little (11.7%).

82.9% of Bradford District residents do not have any illnesses or disabilities which limit their day to day activities, 8% find their activities are limited a lot and 9.1% find their activities are limited a little.

The Census took place during the coronavirus (Covid 19) pandemic. This may have influenced how people perceived and rated their health and therefore may have affected how people chose to respond.

Unpaid care

The census asked people whether they look after or give any help or support to anyone with a long-term physical or mental health conditions, or any problems relating to old age.

In Toller ward, 91% do not provide any unpaid care, 2.8% provide 19 hours or less per week and 3% provided more than 50 hours per week. Residents in City ward were least likely to provide unpaid care (93%), whereas at the other end of the scale 5.6% of Ilkley and Addingham ward residents provide 19 hours or less per week and 3.8% of Wyke ward residents provide more than 50 hours per week.

91.1% of Bradford District residents do not provide any unpaid care, 3.9% provide 19 hours or less per week and 2.8% provided more than 50 hours per week

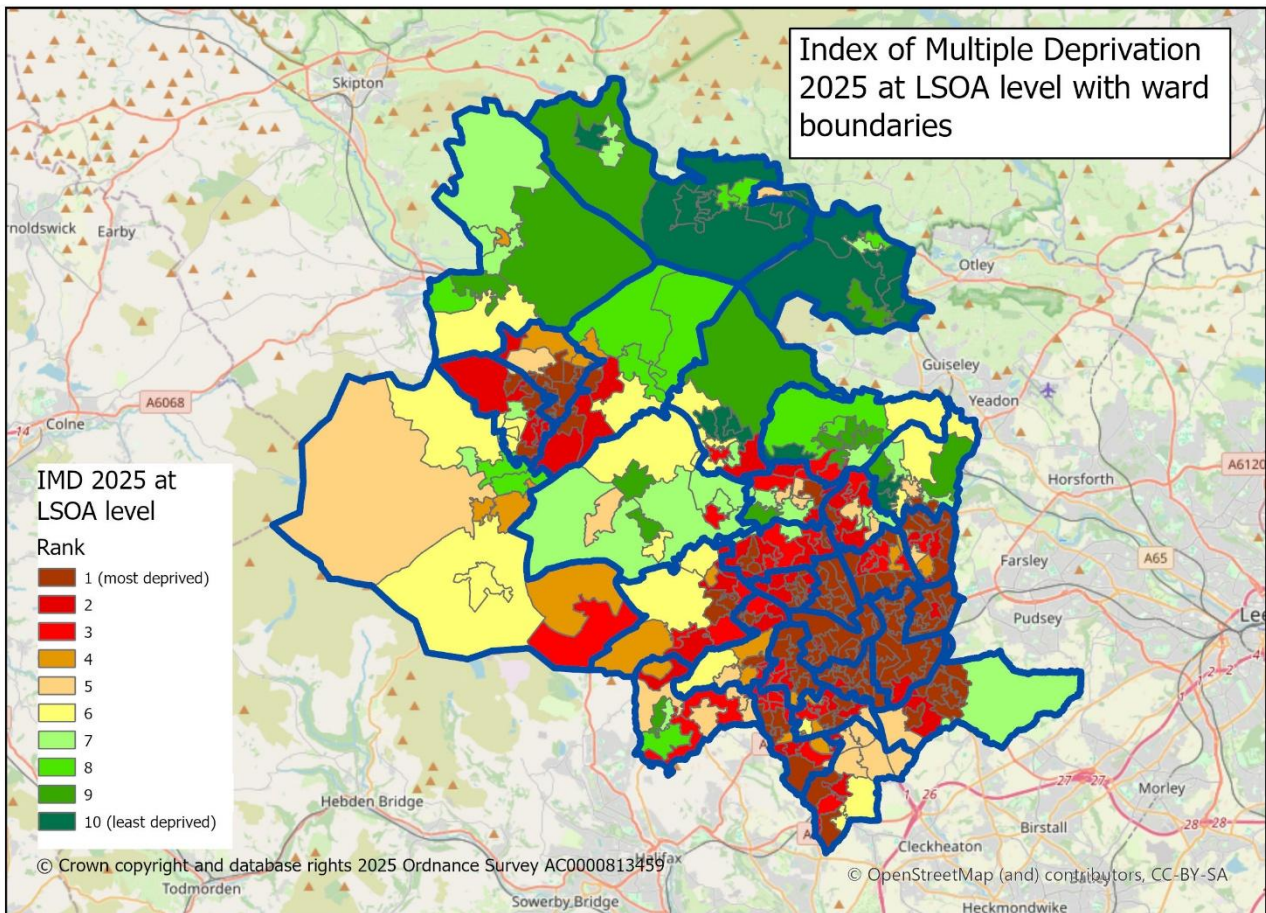
Life expectancy

In 2022-24 life expectancy at birth for both males and females living in Bradford District is lower than the national average. Life expectancy at birth for females is 81.7 years and for males is 77 years. The life expectancy rates for females at birth in England is 83.3 years and for males is 79.5 years.

Data is not available at ward level.

Deprivation

The following map shows Lower Super Output Areas (LSOAs) ranked by deciles of deprivation as identified in the 2025 Index of Multiple Deprivation. More deprived neighbourhoods are shown in red and less deprived neighbourhoods are shown in green.



The lower layer super output area boundaries are not directly aligned with the ward boundaries and individual LSOAs may be split across more than one ward. A best-fit methodology has been used which matches the main population of each LSOA to one ward.

All of the 10 LSOAs in Toller ward are ranked as deprived, (shown in dark and bright red on the above map).

The Indices of Deprivation 2025 were published in October 2025 at district and lower layer super output area. The indices are calculated using 55 separate indicators, organised across seven distinct domains of deprivation (income, employment, education skills and training, health deprivation and disability, crime, barriers to housing and services and living environment) which are weighted and combined to calculate the Index of Multiple Deprivation 2025.

Bradford is the 12th most deprived local authority in England and is ranked 4th most income deprived and 5th most employment deprived.

More about deprivation

The data does not apply to every person who lives in each area. Many non-deprived people live in deprived areas, and many deprived people live in non-deprived areas. It should be noted that the boundaries for Lower-layer Super Output Areas are not necessarily co-terminus with the ward boundaries.

Data sources and further information

Source: 2021 Census, Mid-year population estimates, Indices of Deprivation 2025

Link: www.ons.gov.uk www.nomisweb.co.uk

For more information about population and deprivation at ward level see:

<https://ubd.bradford.gov.uk/>

Contact: Catriona Colborn

Email: catriona.colborn@bradford.gov.uk

Office of the Chief Executive,

City of Bradford Metropolitan District Council,

1st Floor Britannia House, Bradford BD1 1HX

ubd.bradford.gov.uk

Unless marked otherwise, you are free to use the content of this bulletin in your own work as long as you quote the source.

The wording in this publication can be made available in other formats such as large print.

