

Bradford District Local Plan

Infrastructure Planning and the Local Plan

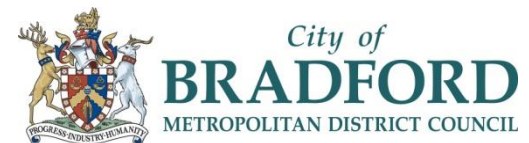


Bradford District Local Plan

Infrastructure Planning and the Local Plan

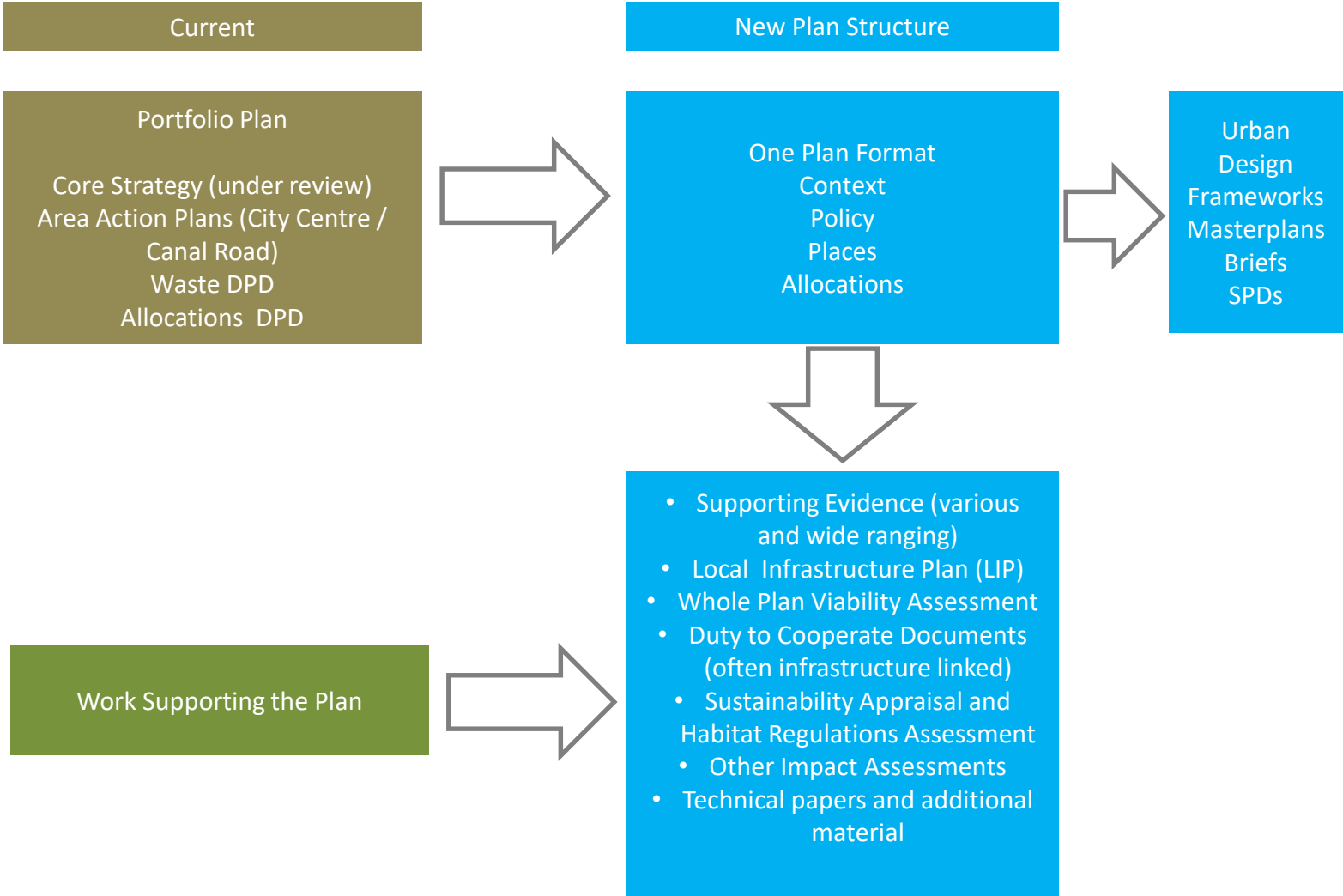
Session 18 – Friday 12th March 2021

Department of Place

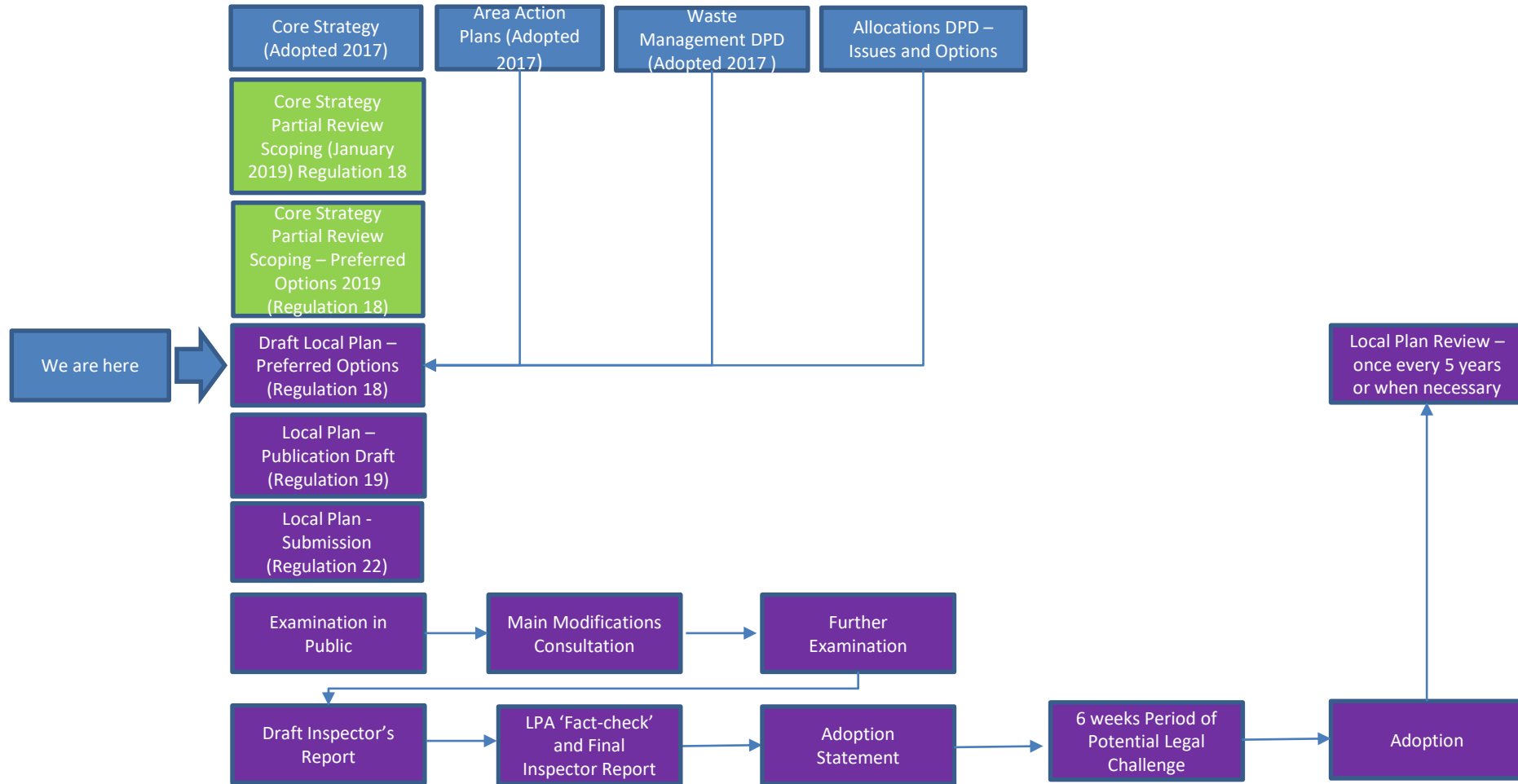


- Event Format and Protocol
- Presentation
- Q&A

Plan Structure



Plan Making Stages



Making Connections



City of
BRADFORD
METROPOLITAN DISTRICT COUNCIL

Plan Directions

- Infrastructure Planning – Importance and Role
- What type of infrastructure do we need to plan for?
- Local Plan and Infrastructure
- The Local Infrastructure Plan
- Delivering infrastructure

Infrastructure Planning – Importance & Role

- Great importance is attached to making sure sufficient infrastructure is in place in the right locations, at the right time to support growth and investment
- Embedded in the National Planning Policy Framework (NPPF) (paragraph 20) and Planning Practice Guidance.
- Investing in infrastructure is essential to support the growth outlined in the Local Plan.
- Need to understand what type of infrastructure needed to meet current and future needs as well as how our assets can be better used.
- Involves working closely with range of partners (Public & Private)
- Funding can come from a range of sources
- Infrastructure planning is an on-going process.

What infrastructure do we need to plan for?

Infrastructure – the range of services and facilities needed for the proper functioning of sustainable communities

Physical Infrastructure

Transport
Utilities &
Communications
Waste & Recycling

Social Infrastructure

Housing
Education
Sport, Leisure &
Recreation
Community & Cultural
Facilities
Emergency Services
Health & Wellbeing

Environmental Infrastructure

Green Infrastructure
Networks
Biodiversity &
Geodiversity
Blue Infrastructure
Networks



City of
BRADFORD
METROPOLITAN DISTRICT COUNCIL

Local Plan & Infrastructure

- The plan acknowledges the need to ensure infrastructure and services have the capacity can accommodate additional growth.
- Highlighted in the strategic objectives whilst the Plan contains a range of strategic and thematic policies that provide the context for delivering infrastructure to support growth.
- Some of the Strategic Policies includes:
 - Policy SP7: Planning for Sustainable Transport
 - Policy SP8: Housing Growth
 - Policy SP10: Green Infrastructure
 - Policy SP13: Strategic Planning for Waste
 - Policy SP15: Creating Health Places

Local Plan & Infrastructure

- Some of the thematic policies include:
 - Policies TR1 to TR7 relating to sustainable transport
 - Policies EN1 and EN2 relating to Green Infrastructure provision, and biodiversity/geodiversity protection and enhancement
 - Policies EN7 and EN10 relating to flood risk and energy
 - Policies EN18 to EN20 relating to sustainable waste management.
 - Policy CO1 relating to the provision and enhancement of open space
 - Policy CO2 relating to provision and protection/enhancement of community infrastructure (including health, education)
 - Policies ID1 & ID2 – set out the approach towards delivering infrastructure. ID1 highlights the importance greater digital connectivity.

Local Infrastructure Plan (LIP)

- Essential part of the Local Plan evidence base and is produced to support the delivery of growth set out in the Bradford Local Plan
- Examines existing infrastructure provision/issues, and will seek to determine:
 - What infrastructure is needed for the future;
 - When it will need to be provided;
 - Who will be responsible for delivering and/or providing it;
 - How much it will cost and how it will be paid for; and
 - Whether there are any gaps in funding and how it will be bridged.



Local Infrastructure Plan (LIP)

How is the LIP produced



Stage 1

- Review of Infrastructure Policy, Plan and Strategy
- Stakeholders Engagement
- Update LIP Baseline Information incorporating review of planned and proposed infrastructure works



Stage 2

- Identify and analyse potential impact of predicted growth on infrastructure provisions
- Identify infrastructure cost, potential funding mechanism, timescale and responsibility for delivery
- Draft LIP report and delivery schedule



Post publication

- Ongoing monitoring of LIP implementation
- Review and update of LIP Schedule to report progress to date and additional schemes

A “living document” that will be regularly updated as information becomes available or new infrastructure schemes are identified



City of
BRADFORD
METROPOLITAN DISTRICT COUNCIL

Local Infrastructure Plan (LIP)

Format of Assessment

For each infrastructure type the assessment seeks answers to some key questions and identify important points that must be taken into account in planning details and facilitating infrastructure funding and delivery:

- **What** –an overview of the relevant infrastructure.
- **Where** – where do the plans affect?
- **When** – what timescales are involved?
- **Why** – why is a change needed?
- **Where are we now** –what requirements identified? Delivery of key projects?
- **Who**- key responsibilities in delivering the identified infrastructure needs/schemes.
- **Next steps** - in terms of project delivery and infrastructure planning?
- **Risk and Mitigation**- potential challenges or risks associated with infrastructure
- **Infrastructure Schedule**: list of projects which are scoped to a reasonable level of detail and committed to by the necessary stakeholders.



Local Infrastructure Plan (LIP)

Infrastructure Schedule

- LIP must consider the plans, strategies and programmes of a range of infrastructure providers (public and private) and other key bodies.
- Infrastructure Schedule lists all planned capital projects identified from infrastructure provider's various plans and strategic documents.
- Infrastructure Priority- Critical, Essential and Desirable.
- Can be used as part of bids for infrastructure funding.
- The delivery schedule is a 'live' document and will be updated further in consultation with partners.

Infrastructure Schedule: Highways and Road Network

Priority	Project Name	Summary of Project	Location	Status	Timescale for Delivery (if known)	Estimated Costs (if known)	Funding Sources (if known)	Committed Funds (if known)	Responsibility for Funding/Delivery
Highways and Road Network									
Essential	Harrogate Road / New Line	The improvement of the Greengates junction includes road widening to increase capacity and reduce congestion on the A657 & A658. The Scheme will involve major civil engineering works.	Bradford (The A658 Harrogate Road / A657 New Line junction (Greengates))	Estimated start date March 2020	June 2021	£7.67m	West Yorkshire Plus Transport Fund	£2.88m	Bradford Council, West Yorkshire Combined Authority
Essential	Tong Street	Corridor improvements on A650 Tong Street to increase capacity and provide: new cycle routes, upgraded crossing and junctions to include toucan crossing facilities, and green infrastructure improvements.	Bradford (Dudley Hill roundabout to north-west end of Drighlington Bypass)	Estimated start date November 2021	September 2023	£20.00m	West Yorkshire Plus Transport Fund	£0.19m	Bradford Council, West Yorkshire Combined Authority
Essential	South East Bradford Link Road	A new Highway link to the SE of Bradford to meet housing and regeneration targets and to address congestion on existing routes to improve connectivity in SE of Bradford and neighbouring areas.	Bradford SE of Bradford from East of Holme Wood and north of the A650 Westgate Hill Street to Dick Lane or into West of Leeds (No option is finalised so far).	Estimated start date April 2024	April 2026	£46.3m	West Yorkshire Plus Transport Fund	£0.01m	Bradford Council, West Yorkshire Combined Authority



Delivering Infrastructure

- Approach to delivering infrastructure is set out in Local Plan policies ID1 and ID2
- Infrastructure delivery is not the sole responsibility of the Council and often involves working in partnership with a range of providers
- This includes a range of CBMDC departments/services as well as other providers and agencies such as utility companies, the NHS, WYCA and Environment Agency.
- Developer contributions towards infrastructure provision will be sought, where appropriate, through either planning obligations (s.106 agreements) or the Community Infrastructure Levy (CIL).
- Other sources of funding may also be used.

Education - Example

‘Pre-plan’

- Work starts with an understanding of pupil forecasts (across a pupil planning area) – linked to demographics, local trends and the impact of new growth (planning permissions and potential commencement and occupancy dates).
- Analysis of pupil numbers and school capacities over a forecast period – broad trends – recent drop in primary, bulge into secondary and fuller need for SEN pupils across all areas.
- Analysis of capital requirements / programming linked to education needs.

Analysis of Plan Impacts (simple example)

- Range and location of sites – potential types of housing units and potential ‘pupil yield’.
- Challenge in relation to scheme delivery dates – work required on permission dates, post permission conditions, pre-construction works, construction phasing and unit delivery levels per annum.

Education - Example

Calculating Pupil Yield – Scheme up to 250 units example

Type of Home	Number of Bedrooms	Average additional primary children per school year group	Average additional secondary children per school year group
Flats/Apartments	2 – 4	1	0.75
Flats/Apartments	5 or more	2	1.5
Houses	2 – 4	2 (or 0.02 as a multiplier)	1.5
Houses	5 or more	2.5	2

Bringing the Analysis Together

Base forecasts and capacities + Local Plan Pupil Yield =
Overall Capacity and Forward School Strategy

Education - Example

Cost per Pupil Place

Bradford District cost multipliers (can change)

Primary	£15,714
Secondary	£21,635

Contributions Formula (primary and house only example)

$0.02 \text{ (yield per year group)} \times (\text{year groups}) \times (\text{number of dwellings}) \times £15,714 \text{ (cost per place)} = £\text{contribution}$

Need to get a fit between contribution outcomes and practical school options.

Thank You