

Bradford District Local Plan

Environmental Policies



Environmental Policies

Local Plan

Session 18 – 11th March 2021

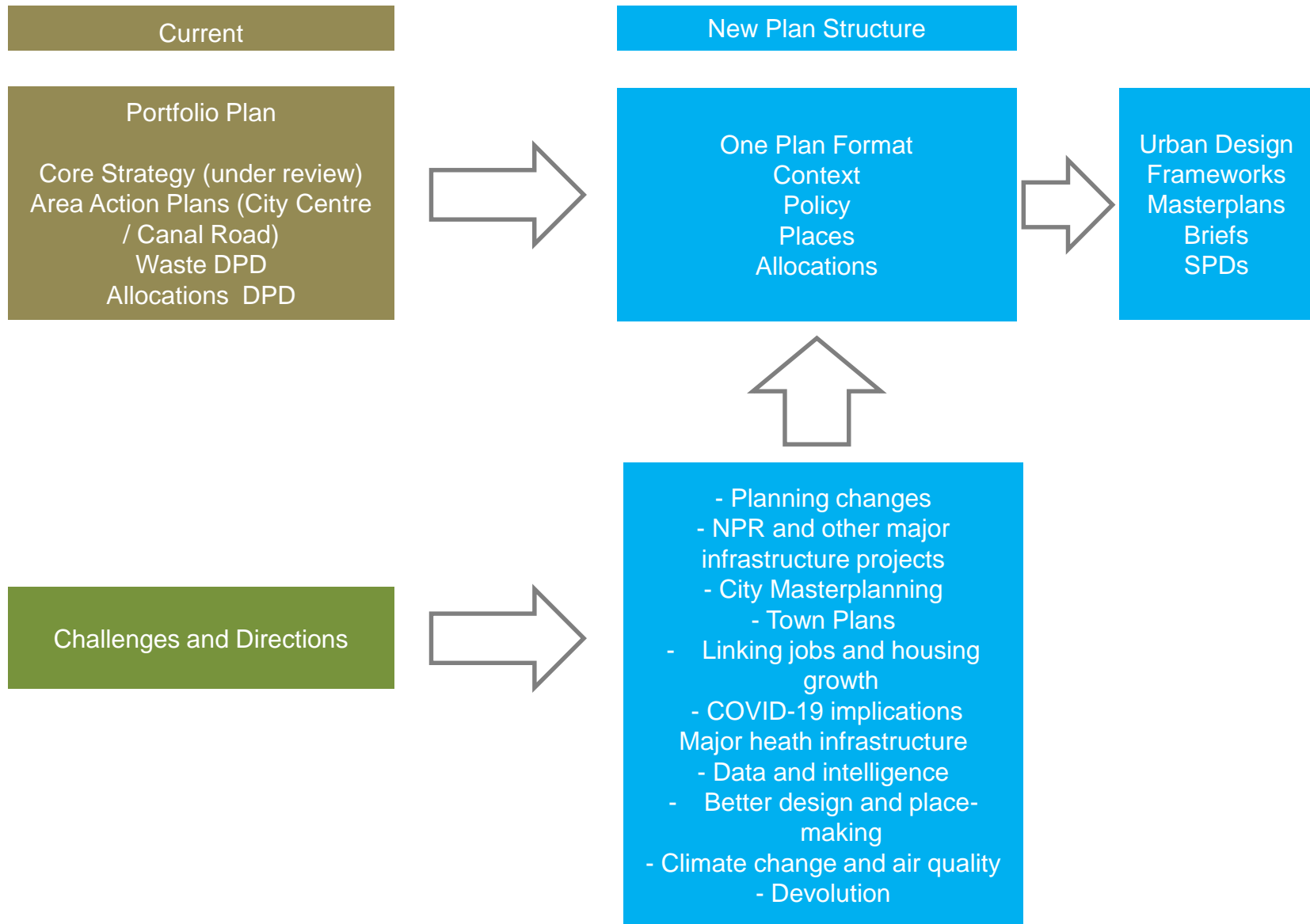
Department of Place

- Event Format and Protocol
- Presentation
- Pre-event Questions
- Further Q&A

Why Produce a Plan?

- **Government requirement with statutory duties set out through the Planning and Compulsory Purchase Act 2004** – essential that plans are in place and kept up to date.
- **Planning application role** - The development plan is at the heart of the planning system with a requirement set in law that planning decisions must be taken in line with the development plan unless material considerations indicate otherwise.
- **Strategic vision and direction** - Plans set out a vision and a framework for the future development of the area, addressing needs and opportunities in relation to housing, the economy, community facilities and infrastructure – as well as a basis for conserving and enhancing the natural and historic environment, mitigating and adapting to climate change, and achieving well designed places.
- **Certainty & Control** – having a Local Plan in place provides the Council and communities with greater control over the scale and nature of development and change compared to a planning application and appeal led situation.

New Plan Structure and Key Drivers



Plan Directions

Strategic Policies

- SP9: Climate Change, Environmental Sustainability and Resources Use
- SP10: Green Infrastructure
- SP11: Protecting the South Pennine Moors SPA/SAC and their zone of influence

Thematic Policies

- EN1: Green Infrastructure Standards
- EN2: Biodiversity and Geodiversity
- EN3: Trees and Woodland
- EN4: Historic Environment
- EN5: Landscape
- EN6: Countryside and Development
- EN7: Flood Risk
- EN8: Air Quality
- EN9: Environmental Protection
- EN10: Energy
- CO1: Open Spaces, Sport and Recreation

SP9: Climate Change, Environmental Sustainability and Resource Use

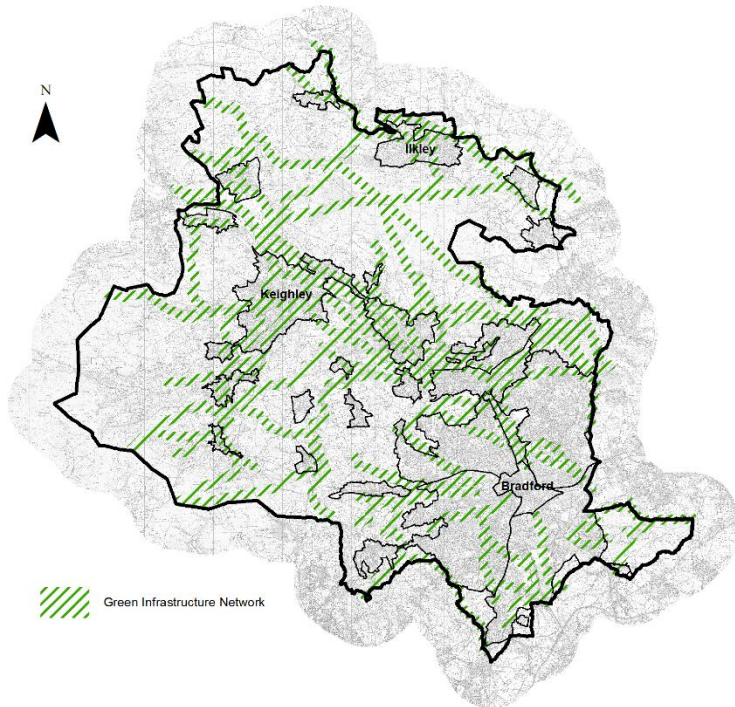
- Climate Emergency – our response
- 2038 target for net zero emissions
- Mitigation measures
 - Location of development, sustainable transport, energy efficiency
- Adaptation measures
 - Sustainable Drainage, Green Infrastructure, zero-emissions vehicles infrastructure
- Resource use
 - Materials, renewable energy, energy efficiency



SP10: Green Infrastructure

EN1: Green Infrastructure Standards

- Defined District Green and Blue Infrastructure Network
- Requirement for GI provision in development
 - New green space, street trees, green roofs/walls, wildlife habitats, SuDS
- Consider the introduction of Green Infrastructure standards



CO1: Open Spaces, Sport and Recreation

- Updated evidence base to inform policy
- Protection of defined open spaces
- Requirement for provision of new open space
- Provision standards
- Need to secure maintenance

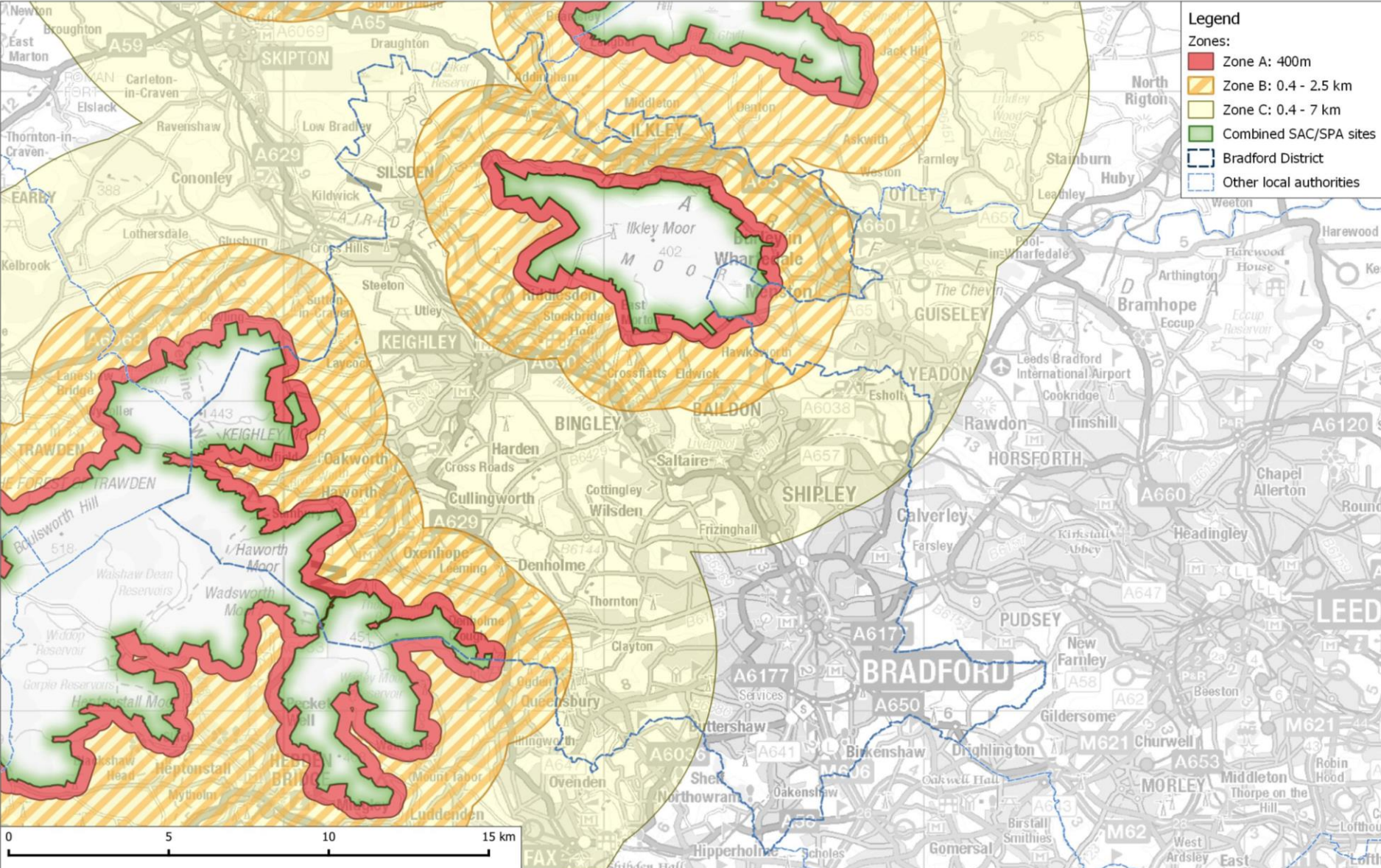


SP11: Protecting the South Pennine Moors Special Protection Area /Special Area of Conservation and their zone of influence

- Zone A (400m) - **no development** involving a net increase in dwellings will be permitted.
- Zone B (2.5km) – consideration given to how development could affect foraging habitat for qualifying species of the SPA, appropriate surveys may be required.
- Zone C (7km) – consideration of how the recreational pressure on the SPA or SAC will be effectively mitigated.
- This policy will be supported by the **South Pennine Moors SPA/SAC Planning Framework Supplementary Planning Document (SPD)** which is being consulted upon at the same time as the Local Plan.



SP11: Protecting the South Pennine Moors Special Protection Area /Special Area of Conservation and their zone of influence



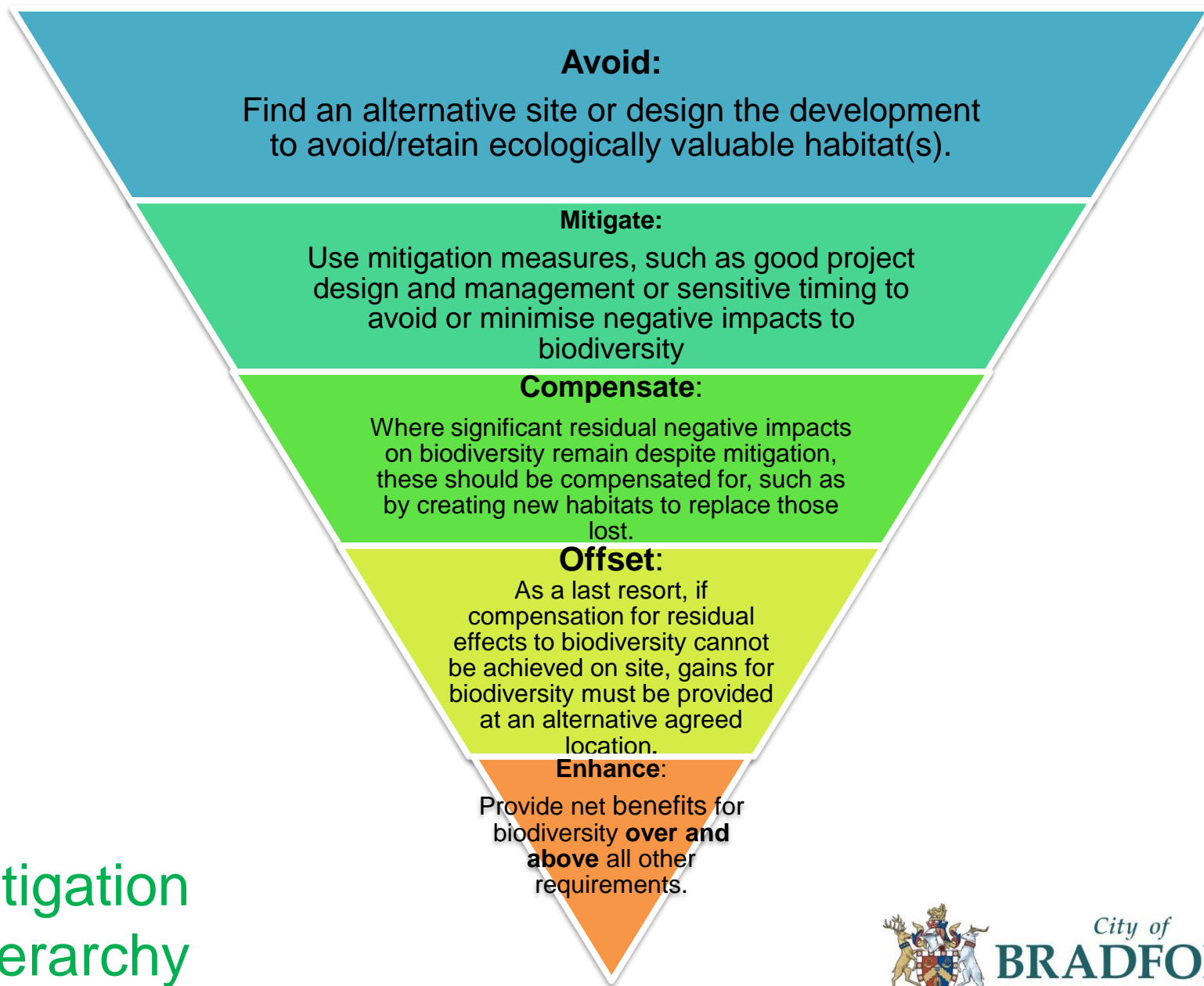
Contains Ordnance Survey data © Crown copyright and Database Right 2020. Contains map data © OpenStreetMap contributors. Terms: www.openstreetmap.org/copyright Designated site boundaries download from the Natural England website © Natural England.

EN2: Biodiversity and Geodiversity

- Protection and enhancement of designated wildlife and geological sites
- Biodiversity Net Gain requirement
- Mitigation hierarchy
- Enactment of the Environment Bill may lead to future revisions.



Mitigation Hierarchy



City of
BRADFORD
METROPOLITAN DISTRICT COUNCIL

EN3: Trees and Woodland

- Protection and enhancement of trees and woodland.
- Presumption to retain trees and integrate existing healthy trees into new development
- Requirement to plant new trees/woodland on all new developments (including a fruit tree in every garden).



EN7: Flood Risk

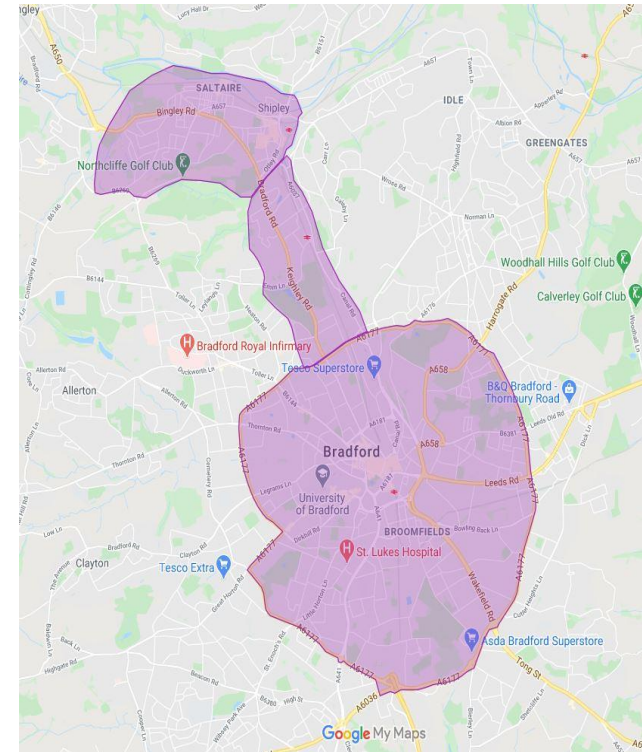
- Policy carried forward from the Core Strategy Partial Review with some further amendments.
- Direct development to areas of lowest flood risk.
- Apply the sequential and exception tests to development proposed in areas of flood risk.
- Minimise surface water run-off, use of drainage hierarchy and Sustainable Drainage Systems.
- Support proposals for natural flood management, and restoration of culverted watercourses.
- Work programme with EA on SFRA Level 1 update – linked to river modelling and climate change uplifts.

EN8: Air Quality

- Policy separated out from other Environmental Protection issues.
- Strategic roles of Local Plan: a) where development is located and how it is supported b) the types of places that are built c) effective sustainable infrastructure planning.
- In circumstances where air pollution is prevalent, planning can also promote design to minimise the potential impacts on human health, welfare and the natural environment.

EN8: Air Quality (cont.)

- Council consulted on a proposed charging Clean Air Zone (CAZ) where targeted action is taken to improve air quality.
- Where a Clean Air Zone is introduced it should be identified in the local plans and policies and local transport plan at the earliest opportunity. The CAZ is identified on the Policies Map.
- Recognised impact of poor air quality on human health but also wider environment – further work required on SPA impacts and other areas of high environmental value.



EN8: Air Quality (cont.)

- Policy Directions:
 - Support for implementation of Clean Air Plan.
 - Linking sites to public transport and active travel options / improvements.
 - Measures to reduce the impact of new developments on air pollution.
 - Air quality assessments (major developments) with demonstratable positive outputs within CAZ.
 - Supporting CAZ SPD

EN10: Energy

- Improving energy efficiency and using more renewable and sustainable energy sources is fundamental to tackling climate change.
- Strong focus on energy conservation and efficiency, and decarbonisation of energy sources contribute to meeting net zero emissions.
- Use of the energy hierarchy for major development proposals with measured proposals.
- Wide range of domestic energy measures - smart technology, fabric energy efficiency, onsite renewable / low carbon energy use, site wide heating and links to district heating, zero carbon push on medium sized sites (50 units plus) and future homes standard on all aligned to Government timelines.

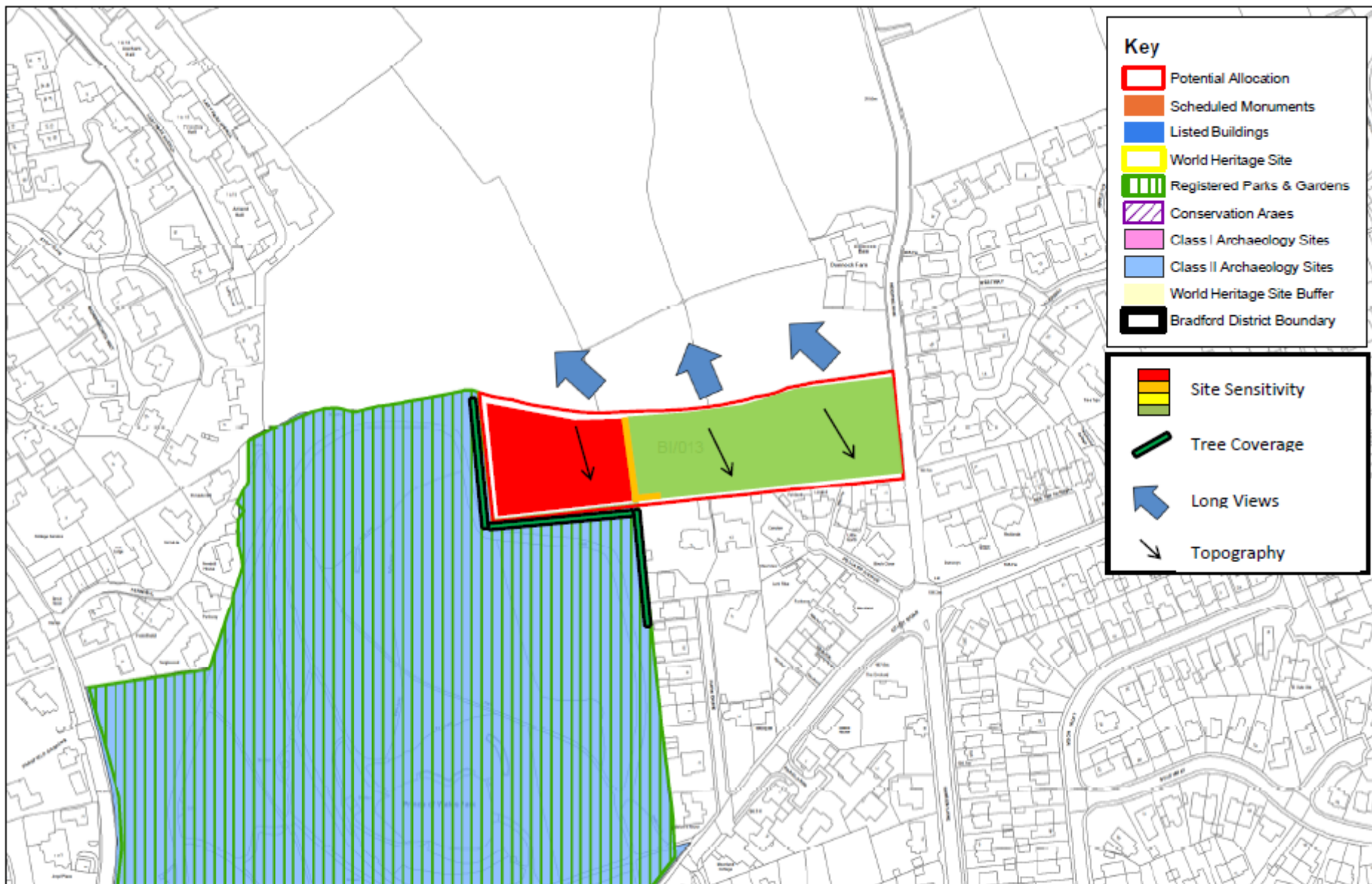
EN10: Energy (cont.)

- BREEAM Very Good on medium / large non domestic buildings.
- BREAAM Excellent (minimum) on strategic scale employment / strategic sites.
- Future Buildings Standards by 2025.
- Strategic projects role – supporting new infrastructure provision – currently ‘call for sites’ for potential renewable energy sites.
- Need for a detailed assessment of the impacts of energy proposals – particularly in relation to environmental impacts and air safety.

EN4: Historic Environment

- Core Strategy policy carried over.
- Continue to preserve, protect and enhance.
- Respect and reinforce the distinct character of local areas.
- Heritage Impact Assessments of sites – on going.





Key

- Potential Allocation
- Scheduled Monuments
- Listed Buildings
- World Heritage Site
- Registered Parks & Gardens
- Conservation Areas
- Class I Archaeology Sites
- Class II Archaeology Sites
- World Heritage Site Buffer
- Bradford District Boundary

- Site Sensitivity

- Tree Coverage

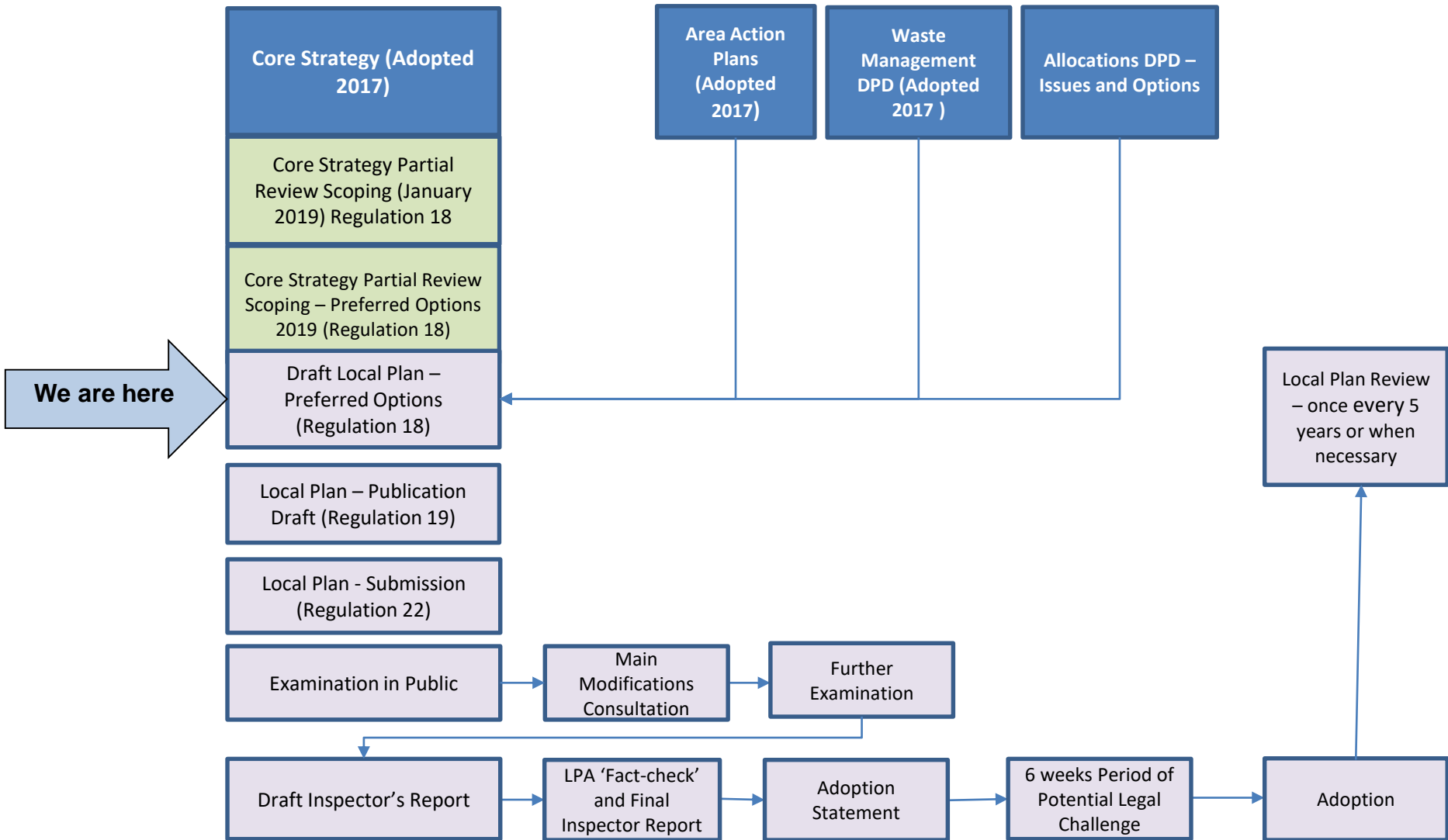
- Long Views

- Topography



BRADFORD
METROPOLITAN DISTRICT COUNCIL

Plan Making Stages



Thank You