

Bradford District Local Plan

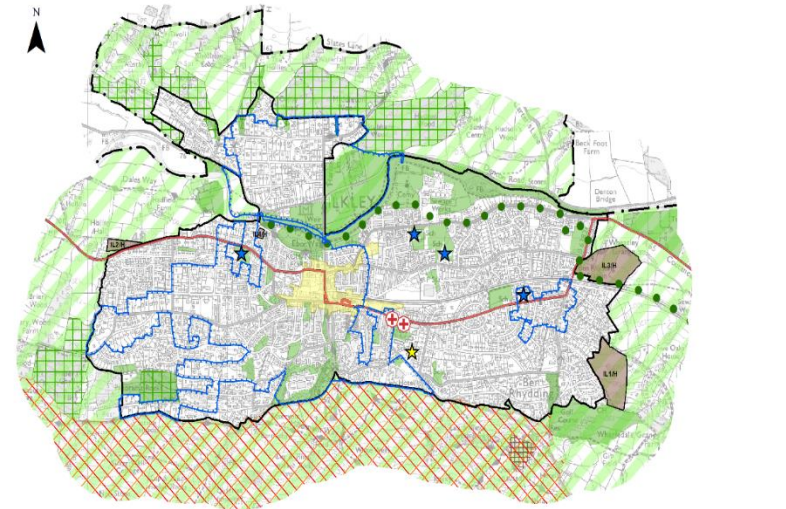
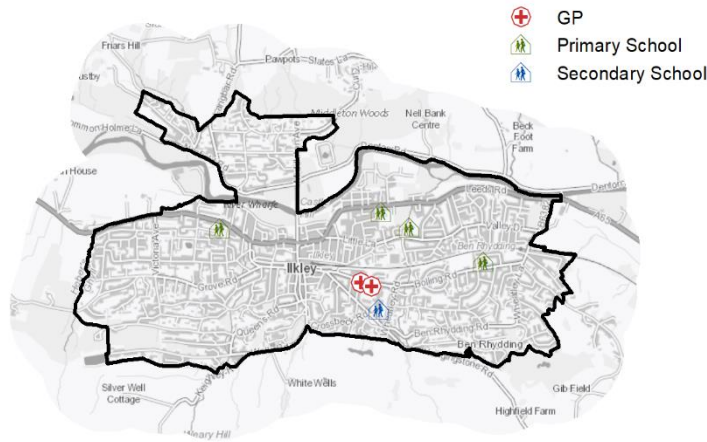
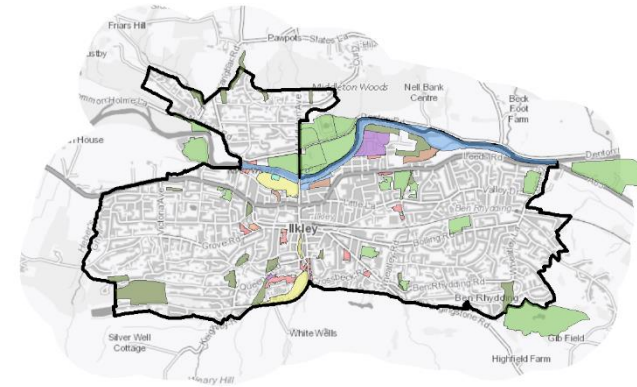
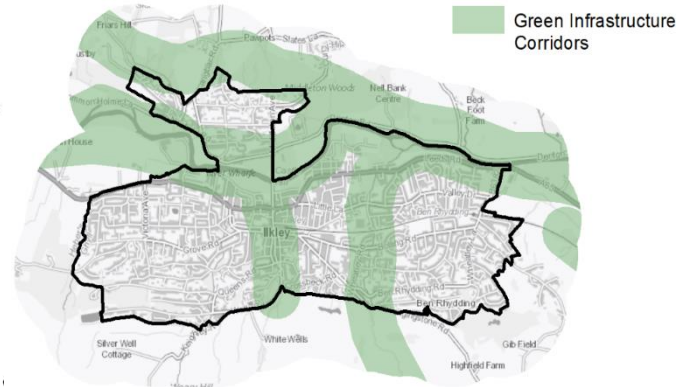
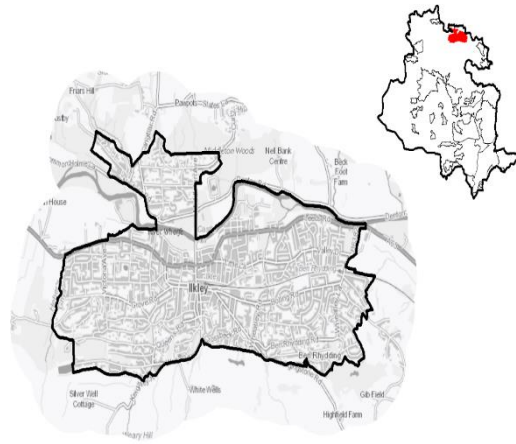
Bradford District – Towards 2040



What is the local plan?

- Provides information on where new homes and jobs will be located.
- Sets out areas for protection – open spaces, parks, places of wildlife for example.
- Policies and projects on transport.
- What the Council is doing about tackling climate change.
- Policies on shopping and local facilities.
- Helps manage development / planning applications.

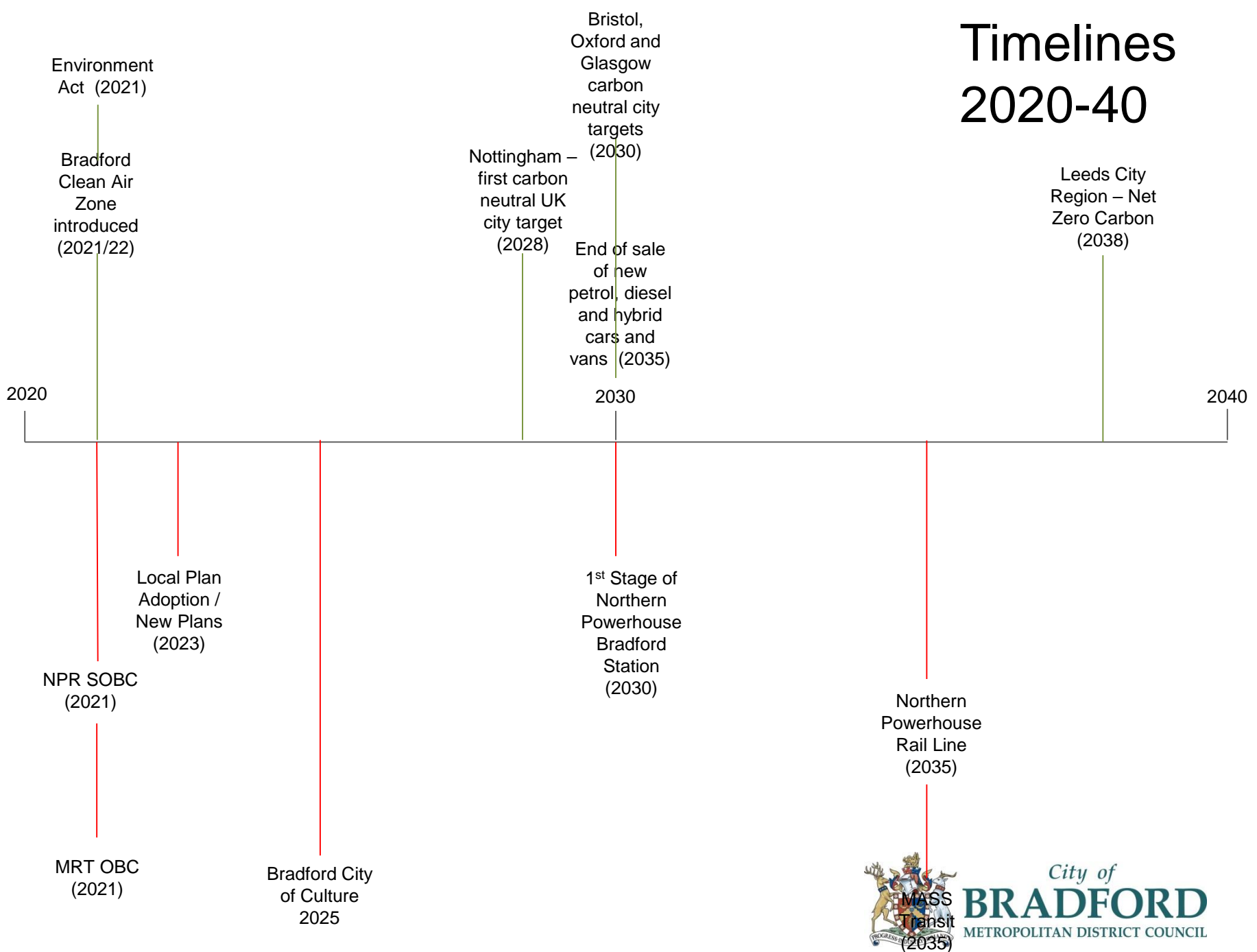
Plan Information



- | | | | |
|---|--|--|--|
| <ul style="list-style-type: none"> Bradford Council Boundary Settlement Boundary (SP) Green Belt (SP) Enterprise Site Delivery and Strategic Sites (EC1) Enterprise Zones (EC2B) Business Development Zones (EC2C) Employment Zones (EC2D) Town Centre (EC4) District Centre (EC4) Local Centre (EC4) | <ul style="list-style-type: none"> Greenways, Walkways and Cycleways (TR1) Bus Priority Corridors (TR1) Highway Schemes (TR1) Rail Sidings and Extensions (TR1) M206 J2 Improvements (TR1) South Bradford Park and Ride (TR1) Parking Extension (TR1) Station Improvements (TR1) Housing Delivery and Strategic Sites (HO1) | <ul style="list-style-type: none"> Special Protection Area and Special Area of Conservation (EN2) Site of Special Scientific Interest (EN2) Local Nature Reserve (EN2) Local Wildlife Site (EN2) Local Geological Site (EN2) Conservation Areas (EN4) Mineral Allocations (EN12) Waste Management Allocations (EN19) Open Space, Sport and Recreation (CO1) | <ul style="list-style-type: none"> High Frequency Bus Network Hospital GP Primary School Secondary School |
|---|--|--|--|
- Please note, not all items shown on the key are applicable to the area shown on the plan.

Timelines

2020-40



New Homes

- **What is important in the design of new homes?** The plan includes information on broadband, better heated homes, bigger rooms in houses, green spaces and open spaces around homes, more environmentally friendly homes.
- **What types of homes should be built?** The plan talks about more affordable housing, larger houses for families and maybe less apartments / flats. Does anybody have an aspiration to own a house?



Jobs and Shopping

- **What types of jobs does Bradford need?** The plan talks about jobs in the 'green economy', health and social care, media and creative industries but the District also has a lot of manufacturing jobs. Where should these jobs be located?
- **What can the plan do about improving the high street / Bradford City Centre?** Many shops are struggling and closed. What other activities and uses would be good to have? What should we do with empty buildings? Will people return to the high street to shop after the pandemic? What do we need to improve about our streets?



Transport

- **What would help improve cycling and walking?** Safer routes and less traffic? Separate routes for cycling? Less cars on pavements? Facilities nearer to your house? The plan talks about shops and facilities being within a 15 minute walk / cycle of new housing.
- **What is the future role of the car?** Everyday use to get to a job (might be electric car)? Occasional use for longer distance trips to meet friends and family, or holidays?



Climate Change

- **Climate change is here and now – what priorities should the plan include to tackle climate change?**
The plan sets out a move towards low carbon energy use. Move towards less private car use. Policies on trees and green spaces.
- **What are the biggest challenges faced by Bradford?** How important is climate change compared with other priorities?



Green Spaces and Open Spaces

- **Do we have enough open spaces?** The plan sets out to protect and enhance open spaces with the District. We have shortages in some types of open spaces in some areas (allotments for example).
- **How often do you use parks and open spaces?** What spaces do you use and has the use of these spaces changed during the pandemic? How can we improve the use of local open spaces?



Thank You