

Bradford South West Secondary School Planning Area

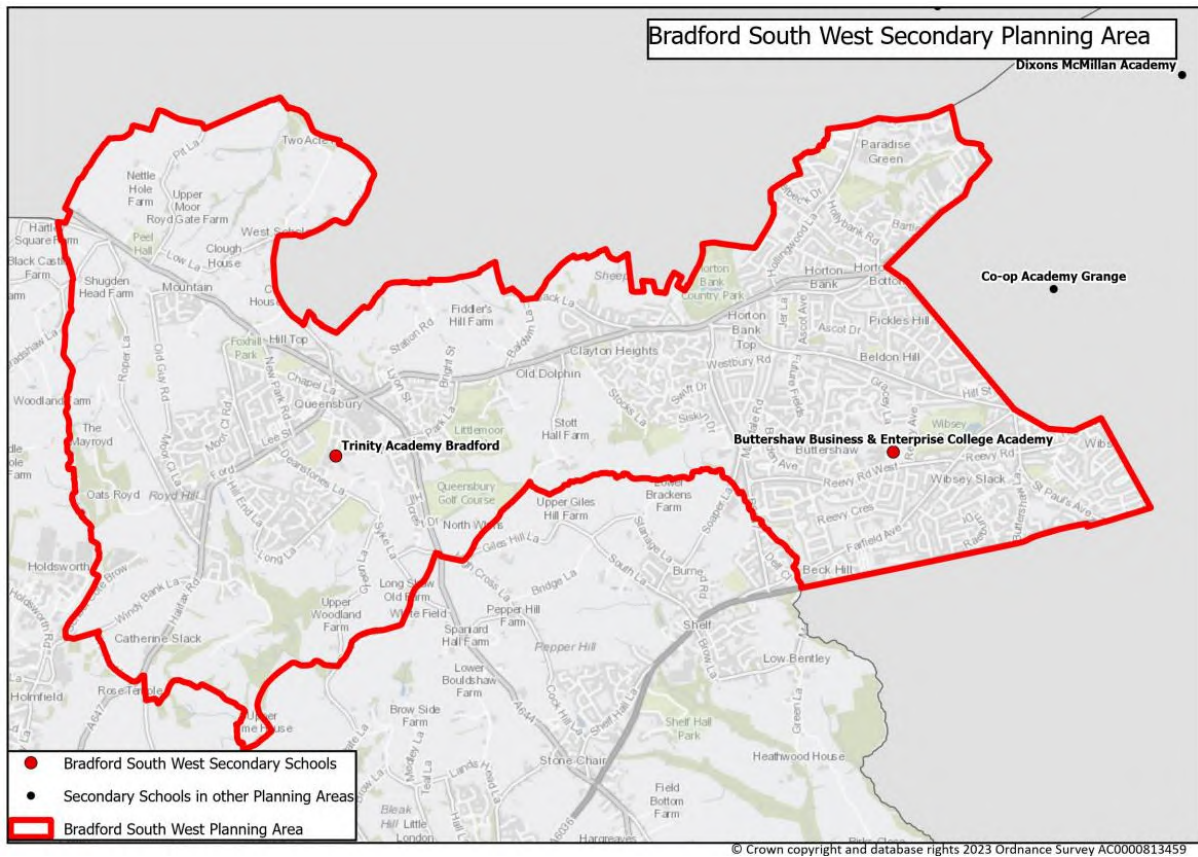
Secondary education in the Bradford South West Planning Area

There are two secondary schools in the Bradford South West planning area, neither of which has post 16 provision. The area covers the south west corner of Bradford, bordering Calderdale to the south. It is rural around the edges of Queensbury village but becomes suburban as it passes through Clayton Heights and Horton Bank Top into Buttershaw.

Schools in Bradford South West Planning Area

School	School Type	Multi Academy Trust (MAT)	Published Admission Number (PAN) 2023	Sixth Form
Buttershaw Business & Enterprise College Academy	Academy	Bradford Diocesan Academies Trust	300	No
Trinity Academy Bradford	Academy	Trinity Multi Academy Trust	180	No

Map of Bradford South West Planning Area and Secondary Schools:



Historic actions and academy conversions

- Buttershaw Business and Enterprise College converted to academy status in September 2016 under Bradford Diocesan Academy Trust.
- Buttershaw removed sixth form provision and increased their PAN from 270 to 300 from September 2018.
- Queensbury School converted to academy status in September 2016 under the Feversham Education Trust with a name change to Queensbury Academy.
- Queensbury Academy joined the Trinity MAT in February 2021 with a name change to Trinity Academy Bradford.
- Trinity Academy Bradford (as Queensbury Academy) closed their sixth form provision in July 2018.
- Trinity Academy Bradford (as Queensbury Academy) reduced their PAN from 240 to 210 from 2019.
- Trinity Academy Bradford (as Queensbury Academy) reduced their PAN from 210 to 180 from 2021 but agreed to admit an additional 10% if required to meet demand.

Forecast methodology for Bradford South West

Given that secondary schools are much larger and more spread out, children of secondary school age often travel further than they did to attend primary school. Forecast methodology is therefore slightly different between the two phases. However, the need for secondary school places still depends on the local child population.

Year 7 forecasts are based on the historic patterns of transfers from Year 6 to Year 7, i.e. the number of children moving up from individual primary schools to specific secondary schools. Other factors include migration in and around the District, and movement of families into new housing developments. These trends are then projected onto the current primary school populations and, where relevant, adjusted to include trends for children attending schools in other Local Authorities or other Local Authority children attending Bradford schools.

Children transfer here mainly from primary schools in South West 2 and South West 3 primary planning areas. Also, the vast majority of children attending schools in the Queensbury primary planning area go on to attend the schools in the Bradford South West secondary planning area.

Around 20 children attend schools here from outside of the District each year, with approximately three times that number of resident children attending schools in other local authorities.

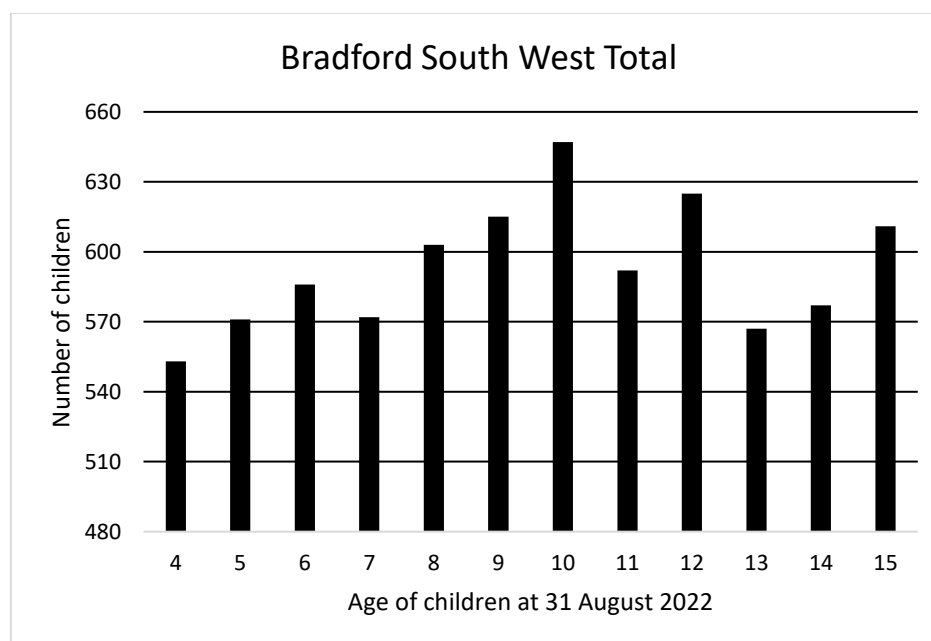
Health Authority Data for Bradford South West

Whilst the number of children living in a secondary planning area is not the primary factor for Year 7 forecasting, data is included here for context. The size of cohorts entering secondary schools has been increasing for a number of years due to larger populations of specific age groups. Across the district the forecast shows that numbers entering the secondary phase will begin to decrease from 2022. However, population figures for this planning area identify the peak to be in 2023, before the decline is seen.

The following tables and chart show the number of children, broken down by their age at 31st August 2022, and are based on January 2023 data received from the Health Authority:

Age at 31 August 2022	4	5	6	7	8	9	10
Bradford South West Total	553	571	586	572	603	615	647
Year 7 Intake Year	2029	2028	2027	2026	2025	2024	2023

Age at 31 August 2022	11	12	13	14	15
Bradford South West Total	592	625	567	577	611
2022/23 School Year	7	8	9	10	11



Forecast & Accuracy

The tables below contain forecast data submitted to the DfE as part of the annual School Capacity (SCAP) return. The grey column shows the difference between last year's forecast and the actual number of pupils on roll at the schools at the January school census.

Year 7

Year	2022	2023	2024	2025	2026	2027	2028	2029
PAN	480	480	480	480	480	480	480	480
Forecast	501	498	498	492	493	490	472	462
Surplus	-21	-18	-18	-12	-13	-10	8	18
% Surplus	-4.4%	-3.8%	-3.8%	-2.5%	-2.7%	-2.1%	1.7%	3.8%
Actual	493	-	-	-	-	-	-	-
Difference	8	-	-	-	-	-	-	-
% Difference	1.6%	-	-	-	-	-	-	-

Whole school (Years 7 to 11)

Year	2022	2023	2024	2025	2026	2027	2028	2029
Total Capacity	2600	2600	2600	2600	2600	2600	2600	2600
Forecast	2322	2364	2391	2412	2423	2420	2394	2358
Surplus	278	236	209	188	177	180	206	242
% Surplus	10.7%	9.1%	8.0%	7.2%	6.8%	6.9%	7.9%	9.3%
Actual	2342	-	-	-	-	-	-	-
Difference	-20	-	-	-	-	-	-	-
% Difference	-0.9%	-	-	-	-	-	-	-

Planned/possible actions

The Local Authority will continue to monitor the number of children and parental preference in this planning area.

Across the District, the number of children due to transfer to secondary in future years is falling. However, this trend does not follow a uniform pattern across all planning areas. The Local Authority will therefore continue to liaise with relevant schools and investigate options for potential bulge classes where appropriate.

Trinity Academy Bradford was successful in its application to be included in the second set of schools in the DfE's Schools Rebuilding Programme. Planning applications to ratify specific proposals are anticipated in 2023/24.