

ADDINGHAM NEIGHBOURHOOD DEVELOPMENT PLAN

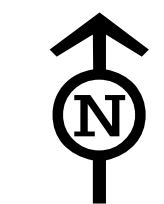
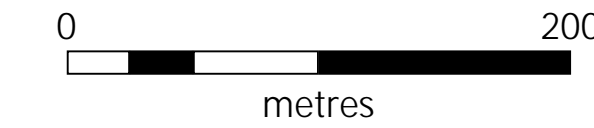
POLICIES MAP 1

(October 2019)

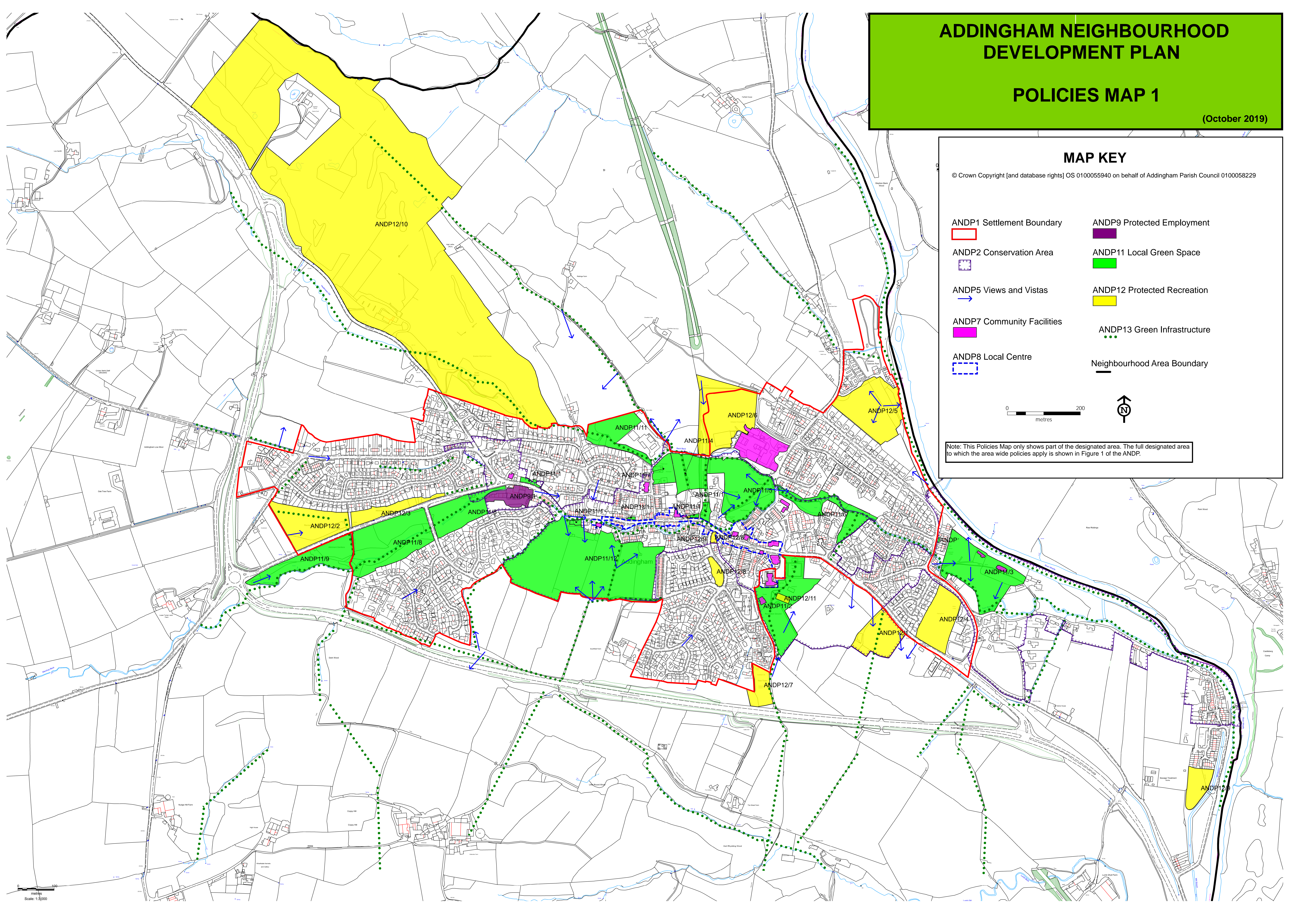
MAP KEY

© Crown Copyright [and database rights] OS 0100055940 on behalf of Addingham Parish Council 0100058229

- | | |
|----------------------------|-----------------------------|
| ANDP1 Settlement Boundary | ANDP9 Protected Employment |
| ANDP2 Conservation Area | ANDP11 Local Green Space |
| ANDP5 Views and Vistas | ANDP12 Protected Recreation |
| ANDP7 Community Facilities | ANDP13 Green Infrastructure |
| ANDP8 Local Centre | Neighbourhood Area Boundary |



Note: This Policies Map only shows part of the designated area. The full designated area to which the area wide policies apply is shown in Figure 1 of the ANDP.



Scale: 1:3,000