

# The Resource Catalogue



*bactive*

City of Bradford MDC

[www.bradford.gov.uk](http://www.bradford.gov.uk)

# Contents

Membership	page	3 - 4
Hire Charges	page	5
General Equipment	page	6
Giant Games and Play Equipment	page	7 - 9
Specialist Equipment	page	10 - 12
Badge Making Machine	page	13
Inflatables	page	14 - 18
Play and Activity Sessions	page	19 - 23
Session Price List	page	24

## Community Play & Activities Development Unit Equipment Loan Membership Scheme

All equipment is supplied in accordance with The Community Play & Activities Development Unit Equipment Loan Membership Scheme Terms & Conditions and the following is for your guidance and information.

Annual membership is £30.00 (free of charge to Registered Holiday Play & Activity Schemes).

We require 2 forms of I.D to become a member (not applicable for CPADU registered schemes). For example - Driving Licence, Bills with your address on them i.e. Gas, Electric, Phone. The information provided will be strictly confidential and stored in a restricted area.

If accepted as a member you will be issued with a membership card. This must be signed. In the event of the card being lost or stolen please inform The Community Play & Activities Development Unit as soon as possible. Replacement membership cards will be charged at £10.00 per card.

On becoming a member of The Community Play & Activities Development Unit Equipment Loan Membership Scheme you will be entitled to borrow equipment subject to availability. Hire costs vary and are subject to availability and discretion. Please refer to the resource catalogue for prices. Registered schemes will only pay hire charges outside of school holiday periods.

The Community Play & Activities Development Unit reserves the right to refuse or suspend the membership of anyone with reasonable cause.

Maximum of 1 week hire period for all equipment. All prices stated are for 1 weeks hire. For longer periods, please ask for a quotation.

Hire charges will apply for overdue items at the discretion of The Community Play & Activities Development Unit.

The Community Play & Activities Development Unit will take all reasonable steps to ensure that the equipment hired is safe, clean and fit for purpose.

All equipment hired is to be returned clean and on time.

Customers are responsible for the safe keeping of all equipment, including boxes at the time of collection until it is returned. Damaged boxes will be charged at a replacement cost.

Please report any broken or missing items to a member of staff upon return. Damages, shortages and breakages are chargeable at current new prices otherwise membership will be terminated.

The Community Play & Activities Development Unit will not be liable for any injury which might arise from using equipment hired. All equipment should be used where practical and reasonable for the sole purpose it was designed for.

**The Community Play & Activities Development Unit reserves the right to vary hire charges without prior notice given.**

# HIRE CHARGES

- Hire of any general equipment is priced at £3.00 for up to 10 items.
- Hire of any equipment in the blue section (Giant Games and Play Equipment) is priced at £3.00 per item.
- Hire of any equipment in the green section (Specialist Equipment) is priced at £5.00 per item.
- Hire of Badge Machine is £3.00 (this does not include parts)
- Inflatables and Specialist Equipment is priced per session – see back page. Price includes, delivery, staffing and collection.

# General Equipment

Below is a list of the general equipment that is available to hire.

Plastic Footballs, size 5  
Plastic Rugby Balls, size 5  
Pick Up Sticks  
Foam Dice  
Bocce Set  
Foam Rings & Target  
Swing Ball Set  
Quick Cricket Set  
Frisbees  
Batting Tees  
Rounders Bats  
Airflow Balls, size 63-89mm

Bean Bags, 6" x 4"  
Skipping Ropes  
Rubber Balls  
Tennis Balls  
Plastic Air Balls  
Uni Rackets  
Quoits - Rubber  
Hoola Hoops  
Marker Cones  
Netballs, Size 5  
Foam Sponge Balls  
Basket Balls



# Giant Games & Play Equipment



**10 Pin Bowling Set (Plastic)**

**Age: 7+**

**Giant Jigsaws (Dinosaur)**

**Age: 4+**



**Monster Trek Feet**

**Age: 5+**

**Parachutes-Small, Medium & Large**

**Age: 5+**



**Hop Sacks (6 Sacks)**

**Age: 6+**

**Hook-a-Duck**

**Age: 5+**





## Large Board Games

Age: 5+

### Giant Dominoes

Age: 4+



### Giant Connect 4 Set

Age: 7+

### Giant Ludo

Age: 5+



### Giant Snakes & Ladders

Age: 5+

### Giant Jenga

Age: 8+





**Play Tunnels**  
**Any age**

**Space Hopper**  
**Age: 4+**



**Bucket Blast**  
**Age: 5+**

**Jamanga**  
**Age: 4+**



**Rugby Tackle Shields**  
**Age: 10+**



**Table Top Cricket**  
**Age: 5+**



# Specialist Equipment



**Training Bibs**

**Age: 5+**

**Uni-Hoc Set Of 10 (3 Sizes Available)**

**Age: 6+**



**Big Box Hockey Set**

**Age: 5+**

**Bull Tag Set**

**Age: 5+**



**Indoor Curling Set**

**Age: 6+**



**Hockey Helmets**

**Age: 5+**

**Thumb Ball**

**Age: 5+**



**Foam Rockets**

**Age: 5+**

**Foam Soft Ball Set**

**Age: 5+**



**Foam Athletics Set**

**Age:5+**



**Samba Goals  
(Football & Rugby)  
Age: 5+**

**Short Tennis Set  
Age: 7+**



**Relay Batons  
Age: 5+**

**Go Any Where Goals  
Age: 5+**



**Giant Go For Goal  
Age: 5+**

# Badge Making



**Badgemaker Machine**

**Age: Adult**

**Supervision Needed**

**Badge Parts**

**Cost to Buy: £7 per 50**



**Key Ring Parts**

**Cost to Buy: £5 per 20**

# Inflatables



## Mini Inflatable

Age: 0 - 10 yrs

Dimensions: 12'wide x 12'long  
x 10'high



All Inflatable Sessions are accompanied by trained members of staff.





## Large Bouncy Castle

Dimensions: 18'wide x 18'long  
12.6'high

All Inflatable Sessions are accompanied by trained members of staff.





## Sports Stadium

Dimensions: 13'wide x 22'long x 12.6'high

All Inflatable Sessions are accompanied by trained members of staff.





## Giant Slide

Dimensions: 13'high x 30.5'long  
x 21'wide



All Inflatable Sessions are accompanied  
by trained members of staff.



## Terminator

Dimensions: 12'high x 26'long x  
12'wide

All Inflatable Sessions are accompanied  
by trained members of staff.



# Play and Activity Sessions

The Unit offer specialised sessions catered to your requirements. All sessions are delivered by CPADU Staff. We cater for single events, and larger multiple activity events such as fun days, galas and fêtes.



**Surfboard Simulator**

**Age: 5+**

## **Surfs Up!**

**Hit the waves on our surfboard simulator without getting cold and wet!**

**Our board simulator ride provides great balance challenging fun for all ages.**



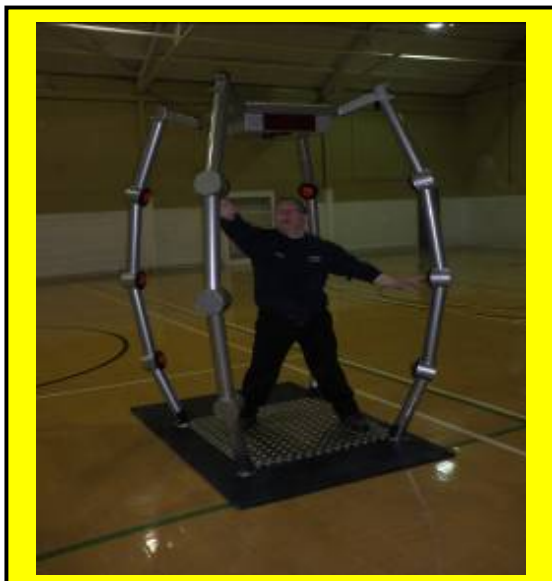


## Body Zorbing

Age: 5+

Body zorbing entails being encased from the waist upwards in an inflatable ball, with only your legs free.

Activities that can be done whilst in the zorb include: football matches, sumo wrestling, arena battles, last man standing, king-of-the-hill and body-bumping.



## Light Chaser

Age: 5+

With the player standing in the middle of our four-legged archway, the aim is to touch randomly illuminated targets in the legs and to do this as often as possible within 60 seconds

## Kangoo Jumps

Age: 5+

Kangoo Jumps are safe, low impact rebound sport shoes, providing many great health benefits, for everyone, any age.



## Mini Bikes

Age: 5+



## Nintendo Wii

Age: 5+

## DJ Workshops

Age: 10+



## Giant Hand Buzzer

Age: 5+

# Play & Activity Sessions

## **Wild Play**

This session involves taking a group of young children to a woodland area (such as St Ives Estate, Bingley), where they will participate in a wide range of activities including Fire Play, Den Building, Nature Exploration and Nature Based Arts & Crafts etc. The aim of the session is to allow children of urban areas to experience nature and woodland that they would not experience in day to day life.

## **Fire Play**

This session is designed to allow young children to experience fire in a safe controlled environment. Research leads us to believe that if children can't experience fire and understand the dangers, they will look for it in other unsafe ways. The activity involves making figures from different materials. Young people will learn how to be safe around fires and gain an understanding that materials burn at different rates.

## **Junk Modelling**

This is a child led activity. As a Unit we provide a mass of safe, clean junk and allow the children to build and play as they like. Our staff will support the children with their ideas and oversee the safety of the session.

## **Arts & Crafts**

Our Arts & Craft sessions can be as flexible as needed. We can adapt the sessions to themes and ability of the children. We can also provide a story telling part of the session involving the finished pieces of work, thus developing the children's imagination and give a platform for children to show peers their pieces of work.

## **Inflatables**

As a Unit we have a selection of inflatables - Mini Castle, Large Castle, Sports Stadium, Terminator and Giant Slide. Each inflatable can be hired for both indoor (room size permitting) and outdoor use, however sessions outdoor are not permitted in rain or strong winds, due to Health & Safety issues. The inflatables are manned by trained staff.

## **Giant Games**

The Unit has a selection of giant games. These include: Giant Jenga, Giant Snakes and Ladders, Giant Ludo, Giant Chess, Giant Checkers, Pick Up Sticks and Giant Connect 4. These can be hired or can be included within an activity session on the settings request.

# Play & Activity Sessions

## **Fun Days**

We can organise a fun day for the setting providing a wide range of activities for all ages and abilities. Face painting is an option to go along side a variety of the other fun activities of the settings choice.

## **Sport/Activity**

These sessions are provided by experienced, qualified sports/activity coaches. The coaches will teach activities and sports that can be enjoyed by all ages, genders and abilities. Activities can range from small, quiet to large organised team games, depending on the children, time and space provided.

## **Bactive Junior Challenge**

This is the junior version of the Bactive challenge and is aimed at Key Stage 1. It allows children to participate and record their key sports skills (balance, strength, agility and hand/eye co-ordination) Each child would receive a different certificate depending on the level they reached.

## **Team Building**

Our Unit can offer a variety of Team Building games for all ages and abilities. We actively encourage the group to work aside all members and not just their close friends.

## **Archery**

We can provide fully qualified GNAS Archery Leaders who will lead a progressive session based around the fundamentals of Target Archery. Sessions will be fun and enjoyable for beginners, whilst maintaining a safe, structured environment.

**Whilst the CPADU has endeavoured to offer a wide range of Play & Activity Sessions, we can provide other tailor made Play & Activity Sessions that can be designed specifically for your group of children and their needs.**

## Activity Price List

The Community Play and Activities Development Unit based at Baildon Recreation Centre provides a mobile team of instructors to deliver a wide range of Multi Activity Programmes. Qualified instructors and specialist equipment is available for the following activities.

**Multi Activity Sessions, E-Play, Cyber Coach, Inflatable Sessions, Olympic Themed Sessions, Group Problem Solving & Team Development Exercises, Kangoo Jumps, Wild Play, Fire Art, Mobile Skate Park, Body Zorbing, Cultural Arts, DJ Workshops, Marquees, Sports Zone, BESPOKE PROGRAMMES ARE ALSO AVAILABLE**

The overall cost of a programme of activities is based on the charges outlined below. A fully inclusive price will be quoted when a booking is made. VAT is included, where applicable.

### Session Charges

**Standard (Costs are for each session with specialist equipment supplied, cost is per single activity)**

Session (up to 4 hours per single activity) **£200.00**

Full Day (up to 6 hours per single activity) **£350.00**

### **Double Activity Costs**

To book 2 activities e.g. - Mobile skate park and Inflatable per Session

**Cost:- £350**

To book 2 activities e.g. - Mobile skate park and Inflatable per Full Day

**Cost:- £600**

To book more than 2 activities per Session or Full Day, a price will be worked out on request **£TBC**

All session and full day bookings will come with a minimum of 2 staff per activity. All sessions are fully risk assessed and all equipment is provided.

**If you are interested in any of our equipment, inflatables or sessions please contact:**

[lee.clapham@bradford.gov.uk](mailto:lee.clapham@bradford.gov.uk) or [neil.barlow@bradford.gov.uk](mailto:neil.barlow@bradford.gov.uk) or alternatively call Lee on 01274 435499 or Neil on 01274 435298

Fax 01274 809302

Community Play & Activities Development

Baildon Recreation Centre

Green Lane

BAILDON

BD17 5JH