

Local Development Framework for Bradford

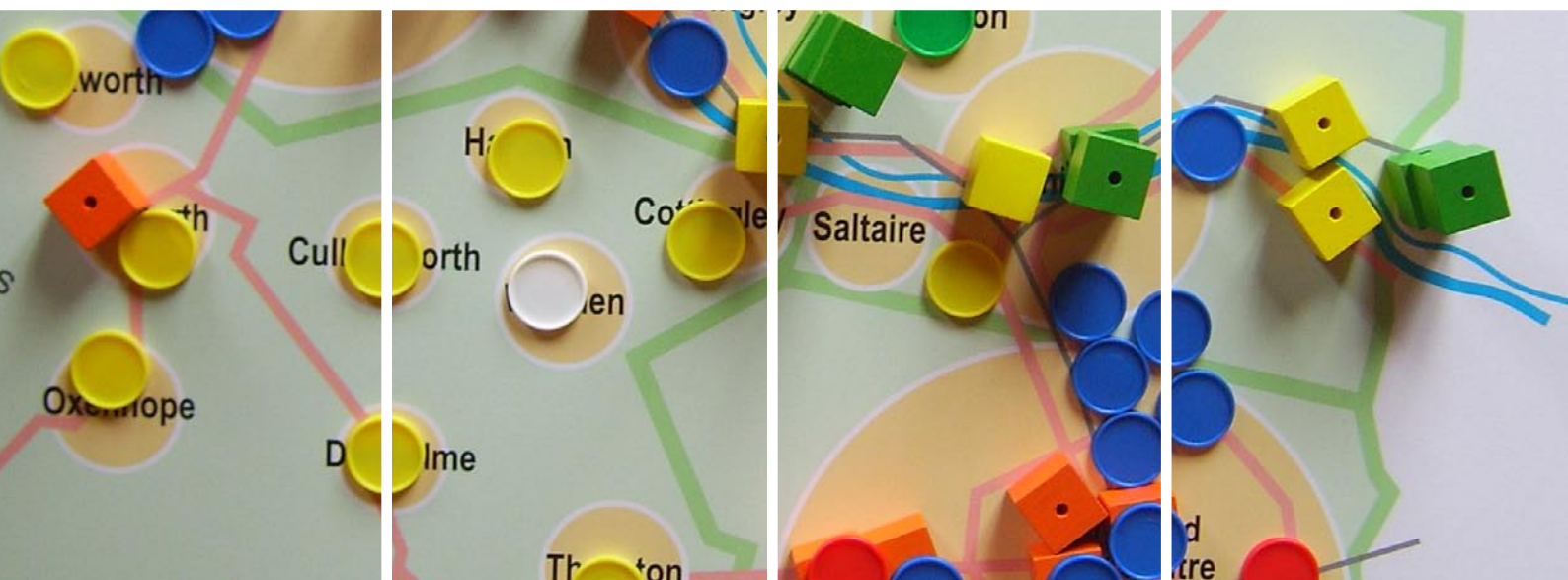
Core Strategy

Issues and Options

Consultation Event Log

Stakeholder Event : AIREDALE
Victoria Hall, Saltaire

19 May 2007



This document is one of a number that make up the Local Development Framework for the Bradford District. If you need the contents of this document to be interpreted or translated into one of the community languages or you require it in Braille, Large Print or on tape, please contact the Local Development Framework Group on (01274) 434050, (01274) 434544 or (01274) 434606

यह दस्तावेज़ उन बहुत से दस्तावेज़ों में से एक है जिनसे मिलकर ब्रैडफोर्ड डिस्ट्रिक्ट का लोकल डिवेलपमेंट फ्रेमवर्क बनता है। यदि आप इस दस्तावेज़ की जानकारी का हिन्दी अनुवाद या इसे ब्रेल, बड़े अक्षरों या टेप पर प्राप्त करना चाहते हैं, तो कृपया लोकल डिवेलपमेंट फ्रेमवर्क ग्रुप से (01274) 434050, (01274) 434544 या (01274) 434606 पर सम्पर्क करें।

ਇਹ ਦਸਤਾਵੇਜ਼ ਅਜਿਹੇ ਬਹੁਤ ਸਾਰੇ ਦਸਤਾਵੇਜ਼ਾਂ ਵਿਚੋਂ ਇਕ ਹੈ ਜਿਨ੍ਹਾਂ ਨਾਲ ਬਰੈਡਫੋਰਡ ਡਿਸਟ੍ਰਿਕਟ ਦਾ ਲੋਕਲ ਡਿਵੈਲਪਮੈਂਟ ਫਰੇਮਵਰਕ ਬਣਦਾ ਹੈ। ਜੇਕਰ ਤੁਸੀਂ ਇਸ ਦਸਤਾਵੇਜ਼ ਵਿਚ ਦਿੱਤੀ ਗਈ ਜਾਣਕਾਰੀ ਦਾ ਪੰਜਾਬੀ ਅਨੁਵਾਦ ਜਾਂ ਇਸਨੂੰ ਬ੍ਰੇਲ, ਵੱਡੇ ਅੱਖਰਾਂ ਜਾਂ ਟੇਪ 'ਤੇ ਪ੍ਰਾਪਤ ਕਰਨਾ ਚਾਹੁੰਦੇ ਹੋ ਤਾਂ, ਕ੍ਰਿਪਾ ਕਰਕੇ ਲੋਕਲ ਡਿਵੈਲਪਮੈਂਟ ਫਰੇਮਵਰਕ ਗਰੁੱਪ ਨਾਲ (01274) 434050, (01274) 434544 ਜਾਂ (01274) 434606 'ਤੇ ਸੰਪਰਕ ਕਰੋ।

ब्राडफोर्ड डिस्ट्रिक्ट (Bradford District) এর লোক্যাল ডেভেলপমেন্ট ফ্রেইমওয়ার্ক (Local Development Framework – স্থানীয় উন্নয়ন কাঠামো) এর অনেকগুলো কাগজপত্র বা দলিলপত্রের একটি হলো এই তথ্যপত্রটি। এই তথ্যপত্রের বিষয়বস্তু কমিউনিটির লোকদের কোনো ভাষায় বুঝতে চাইলে অথবা লিখিত অনুবাদ চাইলে নতুবা তা ব্রইলে (অক্ষলিপিতে), মোটা হরফে কিংবা ক্যাসেটে রেকর্ড করে চাইলে, অনুগ্রহ করে লোক্যাল ডেভেলপমেন্ট ফ্রেইমওয়ার্ক গ্রুপ (Local Development Framework Group)-কে (01274) 434050, (01274) 434544 বা (01274) 434606 নাম্বারে ফোন করুন।

ਆ ਦਸਤਾਵੇਜ਼ ਬਹੁਮਾਂ ਨੂੰ ਐਕ ਓ ਕੇ ਜੇ ਐਡਰੈੱਡ ਡਿਸਟ੍ਰਿਕਟ ਨਾਂ ਸਥਾਨਿਕ ਵਿਕਾਸ ਨੀ ਰੂਪਰੇਖਾ ਅਨਾਵੇ ਓ. ਜੋ ਤਮਨੇ ਆ ਦਸਤਾਵੇਜ਼ਾਂ ਕਾਮਾਏਨੂੰ ਪ੍ਰਾਇਮਰੀ ਆਥਅਮਾਂ ਆਪਨਰ ਕਰਾਵਾਨੀ ਅਥਵਾ ਤੇਨੋ ਅਰਥ ਸਮਝਵਾਨੀ ਜੜ੍ਹਰ ਜਠਾਯ, ਅਥਵਾ ਤਮਨੇ ਤੇਨੀ ਜੜ੍ਹਰ ਐਠਲ, ਕਾਰਜ ਮਿ-ਟ ਕੇ ਪਠੀ ਟੇਪ ਓਪਰ ਡੋਯ, ਜੋ ਮਠੇਰਆਨੀ ਕਰੀ ਕੋਕਲ ਡਿਵੇਲਪਮੇ-ਟ ਫ਼ੇਮਵਰਕ ਗ੍ਰੁਪਨੋ (01274) 434050, (01274) 434544 ਅਥਵਾ (01274) 434606 ਪਰ ਸੰਪਰਕ ਕਰੋ.

یہ دستاویز بریڈفورڈ ڈسٹریکٹ کے مقامی ترقیاتی لائحہ عمل سے متعلقہ دستاویزات میں سے ایک ہے۔ اگر آپ کو اس دستاویز کا زبانی یا تحریری ترجمہ کسی بھی کمیونٹی زبان میں درکار ہو یا آپ اسے بریل، لارج پرنٹ یا ٹیپ میں چاہتے ہیں تو براہ مہربانی لوکل ڈیولپمنٹ فریم ورک گروپ سے ٹیلی فون نمبر: 01274 434050، 01274 434544 یا 01274 434606 پر رابطہ کریں۔

CONTENTS	PAGE
1.0 EVENT OVERVIEW	1
2.0 LIST OF ORGANISATIONS & GROUPS INVITED	2
3.0 LETTER OF INVITE	11
4.0 BOOKING FORM	13
5.0 DELEGATE LIST	16
6.0 EVENT PROGRAMME	17
7.0 POWERPOINT PRESENTATION	18
8.0 PROMPTING SHEET	25
9.0 FACILITATORS NOTES	28
10.0 EVALUATION FORM	37
11.0 FEEDBACK ANALYSIS	39

1.0 EVENT OVERVIEW

OBJECTIVES

- 1.1 The event had two broad objectives:
1. Raise awareness of the Core Strategy Issues and options for Bradford.
 2. Engage with key stakeholders in exploring the key issues and possible options for addressing them in the Core Strategy

The event focused on the Issues and Options Papers in particular *Topic Paper 2: The Spatial Vision and Strategy for Bradford*.

PARTICIPANTS

- 1.2 The Council targeted invites to local organisations and groups with an interest in the area. The letter of invite and a list of invitees can be found below. Participants were sent out copies of the relevant Topic Papers prior to the event, as well as the programme.
- 1.3 A total of 26 delegates plus 6 organisers and facilitators attended the event. The letter of invite, booking form and list of delegates can be found later in this report.

PROGRAMME

- 1.4 The event took the form of a half-day, which started with scene setting presentations followed by break out groups, which looked two key areas. A five minute DVD was used at the start of the presentation to set the scene.

DOCUMENTATION

- 1.5 Copies of the Issues and Options Reports were available on registration as well as the LDF Leaflet No2 on the Core Strategy. A delegate pack was produced which contained:
- Programme
 - Delegate list
 - Copies of each of the presentations

BREAK OUT GROUPS

- 1.6 The break out groups were designed to allow people to express their opinions on the future of the District, more specifically the main issues facing the area and then in the second session, where the majority of housing and employment development should be located.
- 1.7 There were three break out groups for each session. Each had a dedicated facilitator as well as a scribe to record the discussions.

EVENT EVALUATION AND FEEDBACK

- 1.8 Each delegate pack included an event evaluation form. A total of 14 delegates completed a form. These have been analysed and used to inform later events.

2.0 LIST OF ORGANISATIONS AND GROUPS INVITED

14th Keighley (Haworth) Scout Group
 20th Bradford South Scout Group
 21st Bradford Guides, Brownies, Rangers
 21st Halifax (Queensbury) Boys Brigade
 2nd Riddlesden Scout and Guide Group
 34th Bradford South Scout Group
 36th Bradford South Scout Group
 68th Bradford South Scout Group
 8 Coombe Hill
 91st Bfd Guides Rainbows and Boys Brigade
 A A Planning Services
 A Khawaja Architecture Building ServicesLtd
 Abbeyfield House
 ABDRA
 ADAAB
 Addingham Bowling Club
 Addingham Civic Society
 Addingham Parish Council
 Advice and Training Centre
 African Community Support Project
 AFTOC
 AFTOC
 Agape
 Age Concern Bradford & District
 Ahmadiyya Movement Mosque
 Ahmadiyya Muslim Association
 Aire and Calder Rivers Group
 Aire Valley Conservation Society
 Aire Valley Neighbourhood Watch
 Aire Valley Rail Users Group
 Aire Valley Trade Force Ltd
 Aire Valley Venture Scout Unit
 Aire View Infant School
 Aireborough Planning Services
 Airedale and Craven Relate
 Airedale Beekeepers Association
 Airedale Cricket Club
 Airedale General Hospital
 Airedale Music Company
 Airedale NHS Trust Community Drugs
 Airedale Partnership
 Airedale Writers' Circle
 Al Huda Institute
 Albion Juniors AFC
 Aldersgate Estates Ltd
 Aldersgate Methodist Church
 Aldersgate Parent & Toddler Group
 Al-Faouq Associates
 All Saint's 60+ Group
 All Together
 Allerton Community Association
 Alley Cats Over 50's Line Dance Club
 Allison and MacRae
 Ambler Thorn Play Group
 Anchor Housing
 Anchor Housing Social Club
 Anchor Trust
 Ancient Monuments Society
 Anjuman E Haaideria
 Apna Ghar Community Association
 Apperley Bridge Development Residents
 Association
 Arthritis Care
 Asa Briggs Bowling Club
 Ashbourne Estate Community Association
 Ashdown Friendship Club
 Asian Business Forum
 Asian Disability Awareness Action in Bradford
 Asian Disability Network
 Asian Games Tournament
 Asian Trades Link
 Asian Women & Girls Centre
 Asian Women's Support Group
 Asian Youth and Cultural Organisation
 Asquith Properties
 Assisi Centre
 Assisi House Project
 Ataxia Self Help Group
 Atlas Primary
 Atlas Primary School
 Attock Park Residents Association
 Autistic Spectrum Disorder Team
 Azaad Kashmir
 Azad Cricket Club
 B P A
 Baby Sense and Toddler Gym
 BAFR
 Baildon & District Residents Association
 Baildon Action For Youth
 Baildon Civic Society
 Baildon Community Council
 Baildon Community Link
 Baildon Home Farm Trust
 Baildon Music Festival
 Baildon Peace Group
 Baildon Shared Futures
 Bangladesh Community Association
 Bangladesh Community Cultural Organisation
 Bangladesh Youth Organisation
 Bangladeshi Youth Club
 Bank Top Harriers ARLFC
 Bankfoot Action Plan
 Bankfoot Darby and Joan Club
 Bankfoot Villa Football Club
 Banks Long & Co
 Barkerend Childrens Centre
 Barkerend Primary
 Barkerend Primary School
 Barton Willmore Planning Partnership
 Basement Gym
 BAZM-E-ILM-O-FUN
 Bazm-e-urdu Bradford
 BCA
 BCEP Community Urban Design
 BCFC Disabled Supporters Association
 BD4Family, Parents & Toddlers
 BD6 in Stitches
 Beckwith Design Associates
 Bedale 'Darby & Joan' Luncheon Club
 Beechcliffe Face
 Beldon Sports FC
 Belle Vue Girls School
 Ben Bailey Homes
 Ben Rhydding Action Group/Save Us Pub
 Bereavement Welfare Association
 Bierley Community Centre
 Bierley Walkers
 Bierley Youth Action Project
 Bi-Lingual Learning & Teaching Association
 Bingley & Shipley Mencap

Bingley Amateur Operatic Society
 Bingley Arts Centre
 Bingley Civic Trust
 Bingley CVS
 Bingley Environmental Transport
 Bingley Labour Party
 Bingley Society of St Vincent de Paul
 Bingley Voluntary Action
 Bioregional Quaint Developments
 BISAN
 BKYP - Bradford & Keighley Youth Parliament
 Black Mountain Millennium Green/Brunel
 Community Association
 Blue Room properties
 BMEP & JAS
 Bob Jarman
 Bolling Special School
 Bolton Methodist Church
 Bolton Villas CC
 Bolton Villas Cricket Club
 Bolton Woods Community Association
 Borough of Pendle Council
 Bracken Bank Community Centre
 Brackenhill Primary School
 Bradford & Airedale Teaching Primary Care Trust
 Bradford & District Chamber of Trade
 Bradford & District Coalition of Disabled People
 Bradford & District Local Produce Markets
 Bradford & Ilkley College
 Bradford & Northern Housing Association
 Bradford Access Action
 Bradford Action for Refugees
 Bradford Aid for Kosova
 Bradford All Stars
 Bradford Alliance on Community Care
 Bradford and District Youth Offending Team
 Bradford Area Play Association
 Bradford Association of Visually Impaired People & Centre for Deaf People
 Bradford Bandits BMX Racing Club
 Bradford Botany Group
 Bradford Breakthrough Ltd
 Bradford Business Link
 Bradford Cathedral
 Bradford Centre Regeneration
 Bradford Chamber of Commerce & Industry
 Bradford City Disabled Supporters Association
 Bradford City Farm Association Ltd
 Bradford City Football Club
 Bradford City Womens Football Club
 Bradford Civic Society
 Bradford Click-On
 Bradford College
 Bradford Community Arts Ltd
 Bradford Community Broadcasting
 Bradford Community Environment Project
 Bradford Community Health Trust Leeds Road Hospital
 Bradford Community Housing Trust
 Bradford Council-Museums & Galleries Service
 Bradford Cyrenians
 Bradford Diocesan Office
 Bradford District Chamber of Trade
 Bradford District Senior Power
 Bradford Dudley Hill Under 12's
 Bradford Dynamoers
 Bradford East Area Federation
 Bradford East District Venture Scout Unit
 Bradford Empowerment Project Information Shop
 Bradford Environmental Action Trust
 Bradford FSV
 Bradford Gymkhana Cricket Club
 Bradford Hate Crime Alliance
 Bradford Hospitals NHS Trust
 Bradford International Kite Festival Company
 Bradford Joint Training Board
 Bradford Ladies Hockey Club National League
 Bradford Local Communities FC
 Bradford Moor & Thornbury Forum
 Bradford Moor African Caribbean Young People's
 Bradford Moor Bowling Club
 Bradford Moor Community Primary
 Bradford Moor Consortium
 Bradford Moor Cricket Club
 Bradford Moor Housing Office
 Bradford Moor Neighbourhood Partnership
 Bradford Moor Youth & Community Project
 Bradford Moor Youth Sports Association
 Bradford Motor Education Project
 Bradford Night Stop
 Bradford North Retirement Group
 Bradford Older Carers' Association (Mencap)
 Bradford Older People's Alliance
 Bradford Ornithological Group
 Bradford Park Avenue Junior Football Club
 Bradford People First
 Bradford Punjabi Cultural Society
 Bradford Racial Equality Council
 Bradford Ramblers Association Group
 Bradford Real Nappy Project (BEAT)
 Bradford Repetitive Strain Injury Support
 Bradford Retail Action Group
 Bradford Scout/Guides Water Activities
 Bradford Secondary PRU
 Bradford Shalimar Cricket Club
 Bradford Sport & Recreation Association
 Bradford Tigers J F C
 Bradford Trades Union Council
 Bradford Trident
 Bradford University
 Bradford Urban Wildlife Group
 Bradford Vision
 Bradford Vision
 Bradford Vol Action Group for Disabled Persons
 Bradford Wildcats F C
 Bradford Women's Aid
 Bradford WRVS
 Bradford Youth Players
 Bradford Youth Service
 Bradleys Both Parish Council
 Bradnet
 Braithwaite & Guard House Community Association
 BRAVE Women's Support Group
 Brewster Bye Architects
 British Red Cross
 British Telecom
 BRITISH WHEELCHAIR SPORTS FEDERATION
 British Wind Energy Association
 Bruce Barnes
 Brunel Housing

Brunel Housing Association
 Brunel Support Works
 Brunel Tenants Forum
 BSCP
 BSRAPD
 BT (Bradford) Cricket Club
 Buildings Consultation Group
 Burger Court Nursing Home
 Burley Community Council
 Burley in Wharfedale Parish Council
 Burnett Planning & Development
 Buttershaw Action Group
 Buttershaw Bantams AFC
 Buttershaw Baptist Church
 Buttershaw Celtic FC
 Buttershaw Christian Family Centre
 Buttershaw High Rock Challenge Group
 Buttershaw High School
 Buttershaw Primary School
 Buttershaw Youth Centre
 Buttershaw Youth Football Club
 Buy a Child a Smile
 By Worth Craft Group
 BYAP
 BYCO
 BYDP
 Byron Primary School
 CABE
 Caddick Development
 Calder Architectural Services Limited
 Calderdale Metropolitan Borough Council
 CALEB
 Caleb Project
 Cambing Cricket Club
 Campaign For Real Ale
 Canterbury Youth Club
 Careers Bradford Ltd
 Carlton ARLFC
 Carlton-Bolling College
 Caroline Street Social Club
 Carrwood Centre
 Carrwood Primary School
 Carter Jonas
 Cathedral Centre Project
 Cathedral College Deputy Head
 Cavendish Primary School
 CB Richard Ellis Ltd
 CBMDC - Shipley East Regeneration
 CBMDC Youth Service
 Cellar Project
 Central Libraries
 Centre for Deaf People
 CHACH Association
 Chair - Newlands Plus Pact Board
 Chairobics Group
 Challenge College
 Charities Information Bureau
 Chattabox Holiday Club
 Checkpoint Women's Group
 Chief Planning Inspector
 Chris Thomas Ltd Outdoor Advertising
 Consultants
 Christians Against Poverty
 Churches Community Group
 City Centre Project
 City Lofts Development
 City of Bradford Esprit Diving Club
 City of Bradford YMCA
 City of Wakefield M D C
 City PCG
 City PCT - Manningham Clinic
 Clayton ARLFC
 Clayton Heights Community Group
 Clayton Heights Mother & Toddler Group
 Clayton Parish Council
 Clear Designs
 Clerk to Ilkley Parish Council
 Clockhouse Project
 CNet
 COM-B Computing Bradford
 Commission for Architecture and the Built
 Environment
 Community Cohesion Facilitation Service
 Community Development Worker
 Community Exercise Sessions
 Community Involvement Worker
 Community Network
 Community Safety Fire Department
 Community Safety Officer
 Community Service Volunteers
 Community Team Learning Disabilities
 Community Unity
 Community Works
 Communityworks Community Centre &
 Childrens Centre
 Cononley Parish Council
 Cooper Lane Primary School
 Cottingley Community Association
 Cottingley NAP
 Cottingley Theatre Club
 Council for British Archaeology
 Countryside Properties (Northern) Ltd
 Cowling Parish Council
 CPRE Bradford District
 CPRE West Yorkshire
 Craven Design Partnership
 Craven District Council
 Craven United FC
 Croft Hall Social Club
 Crofts Thornbury U13 Soccer Team
 Crosley Wood Residents Group
 Crosley Wood Tenants Action Group
 Crosley Wood Tenants Association
 Cross Roads Junior Football Club
 Cross Roads Junior Football Club
 Crossflatts Village Society
 Crossley Hall Primary School
 Cullingworth Parish Council
 Cullingworth Playsafe Committee
 Dacre, Son and Hartley
 David Beighton Architects
 David Wilson Estates
 Dawatul Islam
 DDA Task Team
 De-Ja-Vu
 Denholme Residents Action Group
 Denholme Town Council
 Denton Parish Council
 Department of Peace Studies (Bradford
 University)
 Depol Associates
 Design Exchange
 DevPlan UK
 Dial Bradford
 Dialogue Communicating Planning
 Disability Advice Bradford

Disability Advice Bradford
 DLA Architecture
 Dominican Association of Bradford
 Donaldsons
 DPDS Consulting Group
 Draughton Parish Council
 Drawtech
 Drighlington Parish Council
 Drovers Way Residents Group
 DTZ Pleds Consulting
 Dudley Hill Imps
 Dudley Hill Rangers FC
 Dulay Seymour
 Dunsford Group for older People
 Early Years & Childcare Service (CBMDC)
 East Bierley Local History Group
 East Bowling Unity Pensioners Club
 East Morton Primary School
 Eastburn Playgroup/Eastburn Playing Fields
 Associa
 EBRO
 Eccleshill Baltic House
 Eccleshill Community Play Group
 Eccleshill Daycare Centre
 Eccleshill Football Club
 Eccleshill Karate Club
 Eccleshill Mechanics Institute
 Eccleshill Sports & Social Club
 Eccleshill Veterans Association & Bowling Club
 Eccleshill WMC
 Eccleshills Utd
 Eddisons Commercial
 Edwards Rainbow Centre
 Eldwick Village Society
 ELIM Church Centre
 English Heritage
 Environment Agency
 Environmental Taskforce
 Eric Barraclough
 Eric Breare Design Associates
 Esholt War Memorial Institute Bowling Section
 Estonian Club
 F and W Drawing Services
 Fabric - Forum for the Arts in Bradford
 Fagley Community Social Club
 Fagley Football Club
 Fagley Lane Action Committee
 Fagley Over 60's
 Fagley Sports and Social Club
 Fagley Tenants & Residents Association
 Fagley Youth and Community Centre
 Fairweather Green Working Mens Club
 Farcliffe Family Centre
 Farnhill Parish Council
 Farrell and Clark
 Faxfleet Residents Association
 Fearnville Primary School
 Feversham Primary School
 Fibromyalgia Support
 First Bradford
 First Martyrs Social Centre
 Fitness First
 Forum Focussed on Pensioner Power
 Four Square Drawing Services
 Foxhill Guides
 Foxhill Primary School
 Foyer Development Manager
 Francis House Residents Association
 Freshstart
 Friends of Alma Nursery
 Friends of Bowling Park
 Friends of Bradford Youth Players
 Friends of Buck Wood
 Friends of Harold Park
 Friends of Lister Park (FLIP)
 Friends of Menston Primary School
 Friends of Newhall Park Primary School
 Friends of Peel Park
 Friends of Roberts Park
 Friends of Swain House
 Friends of Undercliffe Cemetary
 Friends of Woodside Primary School
 Friends of Wycliffe CE Primary
 Friends Together
 Frontline Initiative
 2 Young People's Health Project
 Future Energy Yorkshire
 Future For Women
 G R Morris Town Planning Consultant
 Game On (Leisure Club/Pool Centre)
 Garbe Real Estate Ltd
 Gateway Trinity Football Clu
 George Wimpey Northern Yorkshire Ltd
 Get up&go club
 Gildersome Parish Council
 Gingerbread Housing Project
 Gingerkidz
 Girdlington Action Partnership
 Girdlington Community Centre
 Girdlington Primary
 Glenroyd Residents Association
 Glusburn Parish Council
 Goitside Regeneration Partnership
 Goldfinch Estates Ltd
 Good Companions Dancing Club
 Government Office for Yorkshire & The Humber
 GP Planning and Building Services
 Grange Girls Project
 Great Horton Youth Club
 Green Lane Primary School
 Greenfield
 Greenfield School
 Greengates Albion Football Club
 Greengates Allotment Society
 Greengates Juniors Football Club
 Greengates Liberal Club
 Greengates Primary School
 Greengates Veterans Association
 Greengates Veterans Bowls Association
 Greenhill Action Group
 Greenhill Friday Club
 Greenhill Resource Centre
 Greenway Amenity Group
 Greenwood Youth & Community Centre
 Gregory Properties
 Grosvenor Association
 Grove House Primary School
 Guru Gobind Sikh Temple
 Gurunanak Sikh Temple
 GVA Grimley
 Hackney Carriage Proprietors
 HALE
 Halliday Clark
 Ham Group
 Hanfia Mosque

Hanover Close - Estate Office	Idle Independent Church
Hanson School	Idle Juniors
Harbourne Residential Care Centre	Idle Parish Church
Harbourne Residents Group	Idle Salvation Army
Harden Village Society	Idle Tenants and Residents Association
Harden Youth Club	Idle Tide Committee
Harrogate District Council	Idle Upper Chapel
Haworth & Oxenhope District Bridleways Group	Idle Village Tenants & Residents
Haworth Road Health Centre	Idle WMC
Haworth Road Playgroup	Idle Working Mens Club & Institute
Haworth, Cross Roads & Stanbury Parish Council	Idle YMCA
Haycliffe School	Idlethorpe Indoor Bowlers Club
Haycliffe Special School	ies
Hayes Dobson Developers Ltd	Ilkley Civic Society
Hazel Beck Action Group	Ilkley CVS
Head of Town Planning Legislation Unit	Ilkley Design Statement
Healthy Heaton Group	Immaculate Conception Church
Heartsmart	Indian Workers Association
Heaton Old Peoples Entertainment and Social Centre	Indigo Planning Ltd
Heaton Park Cricket Club	Inland Waterways Association
Heaton Utd	Interfaith Centre
Heaton Woods Trust	Iqra Community Primary School
Help the Aged	ISIS Project
Hendford Drive & Otley Road T & R Assoc.	Islamic Cultural and Educational Assoc.
Hepworth and Idle Cricket Club	Islamic Cultural Centre
High Fernley Primary School	Islamic Relief Agency
High Park Rest Home	Italian Senior Citizens Association
Highgate News	IT's Fun To Dance
Highways Agency, Yorkshire & Humber	J C Redmile
Hindu Cultural Society	J O Steel Consulting
HJ Banks and Co Ltd	J R Wharton Architect
Hollingwood Primary	Jamiat Ahl-E-Hadith
Holme Christian Care Centre	Jamiyat Tabliga-ul-Islam
Holme United Reformed Church	Jeff McQuillan Consulting
Holmewood Activity Centre	Jenny Lane Action Group
Holmewood Community Council	Jer Lane Cricket Club
Holmewood Elderly Persons Forum	Jireh House Community Centre
Holmewood PACT	Joseph Rowntree Charitable Trust
Holmewood Raiders	Jubilee Outreach Yorkshire
Holmewood United Football Club	Just Nails
Holy Trinity Church	JW School of Dance
Holybrook Centre	KADAL
Holybrook Primary School	Karmand Community Centre
Holyfamily RC Secondary School	Katana Ju Jit Su Club
Home Builders Federation	Keighley Bangladeshi Youth Organisation
Home Safety Project Co-ordinator	Keighley College
Home Start Shipley Co-ordinator	Keighley Local Enterprise Agency
Homestart	Keighley NE
Homestart Bradford North	Keighley PACT
Horton Bank Top Playgroup	Keighley Town Council
Horton Grange	Keighley Voluntary Services
Horton Grange Regeneration PACT	Kelly Architectural Design
Horton Park Centre	Kensington Health Centre
Housing Corporation, NE Region	Kent's Leisure Centre
How Planning	Keyhouse Project
Hum Nuwa	Khalifa Society
Human Neighbourhood Project	Kidz Klub
Humdard	Kidzone Unit Manager
Hungarian Heritage	Killingham Primary School
Hungarian Heritage	Kings Park Environment Focus Group
Idle & Thackley AODS	Kirkgate Carers' Group
Idle Baptist Church and Community Centre	Kirkgate Community Centre
Idle C of E Primary School	Kirkgate Studios & Workshops
Idle Corps	Kirklees Metropolitan Council
Idle Cricket Club	Knowleswood Primary School
Idle Hands Cross Stitch & Craft Club	LA Sante
	Laisterdyke Business & Enterprise
	Laisterdyke Centre

Laisterdyke Cricket Club
 Laisterdyke Local History Group
 Laisterdyke Trinity Church
 Lancashire County Council
 Land & Development Practice
 Landmark Securities
 Landtask
 Laneshaw Bridge Parish Council
 Langtree
 Lapage Primary & Nursery School
 Lawcroft House Police Station
 Learning and Skills Council
 Leeds City Council
 Leeds Friends of the Earth
 Leeds/Bradford International Airport
 Legrams Lane U5's & Women's Centre
 Leith Planning Ltd
 Lesleys Hairstylist
 Let Wyke Breathe
 Liasterdyke Community Centre
 Lidget Green Community Partnership
 Lidget Green Primary
 Light of the World Community Centre
 Lilycroft Primary School
 Little Horton NAP
 Littman Robeson
 Low Moor & Wyke British Legion (Women's Section)
 Low Moor Local History Group
 Lower Fields Primary School
 Lowerfields School
 Lowerhouse Close Residents
 M Stephenson
 Making Space
 Manningham & Girdlington Heat Project
 Manningham & Girdlington Plus Project
 Manningham & Girdlington SRB
 Manningham Bloom
 Manningham Brotherhood Cricket Club
 Manningham FC
 Manningham Hockey Club
 Manningham Housing Association
 Manningham Library
 Manningham Mills Cricket Club
 Manningham Mills Sports Association
 Manningham NAP
 Manningham Parish Church
 Manningham Project
 Manningham Residents Association
 Manningham Sports Centre
 Manningham Youth Project
 Manor Property Group
 Maple Properties
 Marilyn Brichard
 Mark Brearley & Co Chartered Surveyors
 Masts
 Mauritian Society
 Mayfield and Clayhill Tenants Group
 McCann's DIY Centre
 McGinnis Development
 Meadowcroft Care Centre
 Menston Arts Club
 Menston Cares
 Menston Community Association
 Menston Parish Council
 Menston Singers
 Mental Health Service Users Group
 Mercury Communications
 Micklethwaite Village Society
 Midas Touch Asian Musical Group
 Middleton Parish Council
 Millan Centre
 Millan Centre
 Millennium Volunteers
 Milton House
 Minister of Clayton Heights Methodist Church
 Miriam Lord First School
 Miriam Lord Primary Shool
 Missol-e-sussi
 Mobile Operators Association
 Mobility Planning Group
 Monday Night Social Group Trust
 Morton Village Society
 Mothers Union
 Mr Simon Loveitt
 Ms Angela Maxwell
 Ms Husenara Sher & Javairia Sabir
 Multi Arts International
 Multiple Sclerosis Friends
 Mums's and Tots at Suttys
 Munch Bunch Toddlers Group
 Munchbunch Toddlers
 Muslim Cultural Association
 National Children's Home
 National Farmers Union
 National Federation of Women's Institutes
 National Media Museum
 Natural England
 Neighbourhood Element
 Neighbourhood Watch Co-ordinator
 Nesfield with Langbar Parish Council
 Netherlands Avenue School &Community Nursery
 Network East Action Trust
 Network Rail
 New Horizons
 New Horizons
 New Mason Properties
 New Virginia Tavern
 Newby House Tenants and Resident Group
 NEWCA
 Newhall Park Primary School
 Newholme
 Newlands (Pregnant Schoolgirl Unit)
 Newlands Local Enterprise LTD
 Newton Street Day Centre
 North Bradford Primary Care Trust
 North Bradford Retired Men's Forum
 North Bradford Retired Persons Action Group
 North Country Homes Group Ltd
 North Wing Community Centre
 North Wing Mission Community Centre
 Northcote C C
 Northern Orchestral Enterprises
 Norwood Green Cricket Club
 Npower Renewables
 Nuttall Yarwood and Partners
 Oakenshaw Residents Association
 Oakenshaw Veterans Association
 Oakworth Village Society
 Oasis Complementary Therapy
 Oddfellows Arms Inn
 Odsal / Sedbergh Junior Rugby Club
 Odsal Residents Liasion Group
 Older People's Focus Group
 Olive Branch Trust

Oltergraft Planning Services
 Omega Design
 On Track
 Operational Manager - Manningham One Stop Centre
 Ormond House Tenants Association
 Otley Road Tenants and Residents Forum
 Otley Town Council
 Our Lady & St Brendan's Catholic Primary
 Oxenhope Parish Council
 Oxenhope Social Club
 Oxford Road R.A.
 P.M Coote
 PACT
 Pact Co-ordination Project
 PACT Team Leader
 Pakistani Women's Forum
 Parent and Toddler Group
 Parkgate Design
 Parkland Primary School
 Parkside Playgroup
 Parkside Residents Association
 Pastor Joe Link
 Paul & Co
 PCT
 Peacock and Smith
 Peel Park Primary School
 Penny Trepka
 Physically Disabled Forum
 Piccadilly Estate management Ltd
 Pizza Box
 Planet Design Group
 Planning Potential
 Planning Prospects Ltd
 PLAYCENTRE
 Plot of Gold Ltd
 Plumpton Park
 Pollard Park Residents Association
 Pondsides Neighbours Group
 Poplars Farm Primary School
 PPG Land Ltd
 Presence FM
 Priestley Centre for the Arts
 Prince's Foundation
 Priority Sites Ltd
 Project 5
 Punjabi Maehfil
 Purlin Project
 QED
 Quadrant Pact Board
 Quadrant Participation Project
 Queens Road B Allotment Association
 Queensbridge United AFC
 Queensbury 18th Bfd Scout Group
 Queensbury Bell Ringers
 Queensbury Club for the Handicapped
 Queensbury Community Association
 Queensbury Community Programme
 Queensbury Cricket Club
 Queensbury Juniors
 Queensbury Juniors ARLC
 Queensbury Juniors ARLFC
 Queensbury School
 Queensbury Support Centre
 Queensbury Tykes Playgroup
 Queensbury Youth & Community Centre
 Quencher
 RAABTHA
 Rafike
 Railtrack Property
 Ramblers Association
 Ravenscliffe & Greengates Community Forum
 Ravenscliffe AFC
 Ravenscliffe Community Association
 Ravenscliffe Enterprise Girls Group
 Ravenscliffe NHO
 Ravenscliffe Y & C Centre
 Ravenscliffe Youth & Community Centre
 Rawson Square Residents Association
 RCDP
 RCDP
 Red Beck Vale Neighbourhood Watch
 Reevy Hill Primary School
 Regen 2000
 Relay Recruitment Rovers
 Respite Care Unit
 Rev Paul Hackwood
 Rev Sarah Groves
 Rev. John Nowell
 Reverend Kevin Tromans
 Revolution Show Corps
 Richards & Co
 RippleDay Treatment & Rehabilitation Centre
 Robinson Architects
 Robinson Consulting Engineers
 Roshni Womens Group
 Rotary Club of Bingley
 Rotary Club of Bingley and Airedale
 Rotary Club of Shipley
 Rowan Avenue Neighbourhood Watch
 Royal Town Planning Institute
 Royds Community Association
 Royds Healthy Living Centre
 Royds Junior Rugby Club
 Royds Rugby Club
 Royds Rugby League Club
 RSPB (Northern England region)
 Runnymede Court
 Runnymede Court Social Club
 Russell Hall Primary School
 Ryecroft Community Centre
 Ryecroft Primary School
 S & R Carpets
 SAFE Project
 Safer City - Bradford & District
 Saltaire Cricket Club
 Saltaire Village Society
 Salvation Army
 Salvation Army Mans Hostel
 Sandale Walk Community Centre
 Sanderson & Weatherall
 Sandy Lane Parish Council
 Sangat Centre
 Scholemoor
 Scouts Association
 SEAFED
 Sedbergh Youth and Community Centre
 Sharing Voices Initiative
 Sherr Guru Ravidas Bhawan
 Shibden Head Primary School
 Shipley & Baildon Blind Welfare Assoc
 Shipley and Baildon Community
 Shipley and Baildon Volunteer Bureau
 Shipley and District Horticultural Soc
 Shipley CABGilstead Village Society
 Shipley College Library

Shipley Red Cross
 Shipley Salvation Army
 Shipley Sure Start
 Shipley Volunteer Bureau
 Shipley Women's Aid
 Shipley/Baldon Save the Children Fund
 Shirley Manor Primary School
 Shop Mobility
 Shree Krishna Community Centre
 Signpost Project
 Silsden Town Action Group
 Silsden Town Council
 Simon Estates Ltd
 Slackside Parent and Toddler Group
 SNOB
 SNOOP
 Social Services Services to Children
 Society for the Protection of Ancient Buildings
 Soldiers and Sailors Association
 South and West Bradford Support Group
 South Asian Females Empowered (SAFE)
 South Bradford Ladies Football Club
 South Pennines association
 South Pennines Packhorse Trail Trust
 Southmere Primary School
 Spawforth Planning Associates
 SPEED Project
 Sport England
 Springdale Friendship Group
 Springfield Bike Project
 Springfield Junior Youth Drama Group
 Springfield Surgery
 Springwood Community Primary
 Springwood Primary
 St Aidan's Presbytery
 St Andrews Church
 St Andrews Methodist Church
 St Anthonys RC Church
 St Augustine's Art Project
 St Augustines Church
 St Brendans Church
 St Clare's Church
 St Clares Community Centre
 St Clares Improvement Group
 St Clares Pastoral Parish Council
 St Clares Sheltered Housing Complex
 St Clements Church
 St Clements Vicarage
 St Columba's Catholic Primary School
 St Cuthbert's Church
 St Francis Catholic Primary School
 St Francist Catholic Primary
 St Hugh's Centre
 St James Securities Ltd
 St James Wednesday Club
 St John The Baptist C of E Church
 St John the Divine
 St John The Evangelist Catholic Primary
 St Johns
 St John's C of E Primary School
 St Johns Church
 St John's Church Youth Club
 St Johns Day Centre
 St John's Luncheon Club
 St Johns U R C
 St Johns United Reformed Church
 St Luke's CE Primary School
 St Lukes Vicarage
 St Mary's Church
 St Mary's Residents Association
 St Matthew's C E Primary School
 St Matthews CE Primary
 St Matthew's Under Fives
 St Oswald's CE Primary
 St Patrick's Church
 St Pauls Vicarage
 St Peter's Catholic Primary School
 St Peters Presbytery
 St Philip's CE Primary School
 St Vincent de Paul Society
 St Wilfrid's Church
 St William's Catholic Primary School
 St Winifred's Parent & Toddler Group
 St Winifrid's Hall Users Group
 St. John's Luncheon Club
 St. John's Under Fives
 St. Mary's Pre School Group
 St. Matthews Parents Group
 Star Keys Estate Agents, Valuers and Surveyors
 Starz Performing Arts Academy
 Steeton with Eastburn Parish Council
 Stockbridge Neighbourhood Development Group
 Stocks Lane Primary School
 Stocks Lane Rangers Football Club
 Stonebridge Court
 Suffa Tul-Islam Assoc.
 Summer Activities Committee
 Sunbridge Road Mission
 Support Team for Deaf Children
 Support Works
 Sure Start Manningham
 Sure Start Project
 Surestart
 Surestart BHT
 Surestart Manningham
 Surestart Manningham
 SURF
 Surti Muslim Khalifa Society
 Sutton Community Association
 Sutton Community Centre
 Sutton-in-Craven Parish Council
 Swain House Primary School
 SWG Planning Services
 Sycamore Court Tenants & Residents Association
 Taking Time - Memory Workshop
 Taleemul-Quran Society
 Telewest Communications
 TFD Football Club
 TFD Youth and Community Centre
 Thackley AFC
 Thackley Cricket Club
 Thackley Football Club
 Thackley Methodist Church
 Thackley Primary School
 Thalassaemia & Sicklecell Support Group
 Prospect Juniors AFC
 The Albion Inn
 The Albion Sports Bar
 The Anchor Project
 The Award Centre
 The Balloon & Basket
 The Blue Pig
 The Bradford Mentor Group

The Brewery Tap
 The British Horse SocietyYorkshire Riding
 Centre
 The City Centre Project
 The Commercial Inn
 The Coniston
 The Cricketers
 The Dog & Gun
 The Dominica Association
 The Emerson Group
 The Fountain
 The Garden History Society
 The Gateway
 The Gateway Centre
 The George
 The Georgian Group
 The Girlington Centre
 The Goldsborough
 The Grange Technology College
 The Great Northern
 The Green Man
 The Greenway Project C/O Duke of Edinburgh
 Awards Centre
 The Hare & Hounds
 The Hitching Post
 The Hog's Head
 The Horse & Farrier
 The Jigsaw Community Project
 The Junction
 The Kirkgate Centre
 The Lane Ends
 The Leisure Centre
 The Light of the World Community Centre
 The Lighthouse Outreach
 The Link Project Bradford & Airedale Mental
 Health Advocacy Group
 The Luncheon Club
 The Mail Corporation
 The Malt Kiln
 The Manor House
 The Moorfield Centre
 The New Inn
 The Old Bell Chapel
 The Peacemakers
 The Priestley
 The Priestley Centre for the Arts
 The Prince of Wales
 The Prospect
 The Prospect Hotel
 The Robin Hood
 The Rockwell Centre
 The Roebuck
 The Royal Hotel
 The Royal Oak
 The Salvation Army
 The Salvation Army in Wibsey
 The Salvation Army Over 60's Club
 The Seven Stars
 The Shoulder of Mutton
 The Sikh Temple
 The Smiling Mule
 The Springfield
 The Swing Gate
 The Theatres Trust
 The Thornbury Centre
 The Thursday Club
 The Tickhill Centre
 The Twentieth Century Society
 The Undercliffe Cemetary Charity
 The Victorian Society
 The Vine Trust
 The Wednesday Club
 The Wellesley Knitting ClubLow Moor Primary
 School PTFAParks Amateur Boxing Club
 The White Bear
 The White Hart
 Thornbury Cricket Club
 Thornbury Gardens and Allotments Association
 Thornbury Methodist Church
 Thornbury Youth & Community Association
 Thornbury Youth Centre
 Thornton Community Centre
 Thorpe Edge Community Forum & RCDP
 Thorpe Edge Community Project
 Thorpe Edge Jaguars St Hockey Team
 Thorpe Edge Women's Self Help Group
 Thorpe Methodist Church
 Tong School
 Tong Sports and Social Club
 Top Line Cricket Club
 Tots Unlimited- BD4 Family Centre
 Touchstone Project
 Town Hall Women's Guild
 Tradeforce Buildings
 Transco (North of England)
 Transport 2000
 Trawden Forest Parish Council
 Trident
 Trinity Methodist Church
 Turnaround Project
 Turner Associates
 Tyersal Action Group
 Tyersal FC
 Tyersal Park Junior Football Club
 Ukranian Church
 Undercliffe ARLFC
 Undercliffe Celtic
 Undercliffe Celtic Junior Football Club
 Undercliffe Cricket Club
 United Co-operatives Ltd
 Unity Cricket Club
 UnLtd - The Foundation for Social
 Entrepreneurs
 Upper Bolton Conservative Club
 Upper Thorpe Edge Tenants and Residents
 Assoc
 Urban Design
 Urban Splash
 User Friendly
 Usman Welfare Fund
 V I Sahara Group
 Ventnor Youth Academy
 Veteran's Association
 Vicar Lane Housing Scheme/New Leaf
 Victim Support
 Victim Support Bradford District
 Victor Road Youth Club
 Victoria Conservative & Constitutional Club
 Victoria Hotel
 Victoria Rangers AFC
 Victoria Rangers ARLFC
 Vincent and Gorbing Ltd
 Vision Academy
 Visual Disability Services
 VJ Associates
 Voluntary Services Centre

Wadsworth Parish Council	Woodhouse Grove School
Waggon & Horse	Woodlands C E Primary School
Walton & Co	Woodlands Cricket Club
Wannabe Performing Arts	Woodleigh Rest Home
Wapping Association	Woodside Primary School
Waterton Park Asian Golf Society	Woodside Village Centre
Webb Seeger Moorhouse Partnership	Working Architects Co-Op Ltd
Wedgewood & Community Nursery	Wrose Community Association
Wedgewood Special School	Wrose Community Centre
Wesleyan Reform Church Luncheon Club	Wrose Community Centre
West Central Area District Federation	Wrose Parish Council
West Riding Suppl	WRVS
West Yorkshire Archaeology Advisory	Wycliffe Tenants and Residents Assoc
West Yorkshire Division Group	Wyke Amateur RLC
West Yorkshire Ecology	Wyke ARLFC
West Yorkshire Fire Service	Wyke ARLFC
West Yorkshire Fire Service	Wyke Christian Fellowship
West Yorkshire LSC	Wyke Christian Fellowship Friendly Club Low Moor and Wyke
West Yorkshire Passenger Transport	Wyke Local History Group
West Yorkshire Police Crime Prevention	Wyke Manor and Community College
West Yorkshire Service	Wyke Manor Community Centre
Westbourne Mothers & Toddlers	Wyke Manor Community College
Westbourne Primary School	Wyke Urban Village
Westfield Shoppingtown Ltd	Wyke Youth Link
Weston Parish Council	YMCA
Westwood Sports Club	York House Tenants
Wharfe Valley Rail Users	Yorkshire and Humber Assembly
Whetley Primary School	Yorkshire and Northern Cultural Society
White Hart	Yorkshire British Waterways
Wibsey ARLFC	Yorkshire County Cricket Club
Wibsey Jets Football Team	Yorkshire Cricket Board
Wibsey Local History Group	Yorkshire Electricity
Wibsey Primary School	Yorkshire Forward Regional Development Agency
Wibsey Rugby Club	Yorkshire Martyrs Catholic College
Wibsey WMC AFC	Yorkshire Planning Aid
Wilsden Good Neighbours Scheme	Yorkshire Union of Golf Clubs
Wilsden Parish Council	Yorkshire Water Services Ltd
Wilsden Village Hall	Yorkshire Wildlife Trust
Wilsden Village Society	Young at Heart
Windhill Food Coop	Young Muslim Organisation
Windhill Futures Project	Young People's Health Infoline
Women Zone	Young Womens Project
Won Off Wonders	Youth Base
Woodgate Baptist Church	Youth Development Project
Woodhall Planning and Conservation	
Woodhouse & Springbank NF	
Woodhouse Grove Methodist Church	

3.0 LETTER OF INVITE

City of Bradford Metropolitan District Council

www.bradford.gov.uk

Plans and Performance Service

8th Floor Jacob's Well
Manchester Road
BRADFORD
West Yorkshire BD1 5RW

Tel: (01274) 434050
Fax: (01274) 433767
Minicom: (01274) 392613
E-Mail: ldf.consultation@bradford.gov.uk
My Ref: TDP/P&P/LDF/CS/I&O
Your Ref:

13th April 2007

Dear Sir or Madam,

Bradford District Local Development Framework – Core Strategy Issues and Options Consultation Event

Bradford Council is currently preparing a Core Strategy this is an important document that will, once adopted, form part of the District's emerging development plan under the new Local Development Framework (LDF). The LDF will eventually replace the current development plan for the area, the Replacement UDP.

The Core Strategy will address the scale and distribution of development across the District over the next 15 – 20 years. In this respect it will set the strategy for the identification of broad locations for new housing, employment, and transport investment, as well as identify broad areas where development should be restrained. (The Core Strategy will not identify specific sites for development, but it will influence how development will be distributed across the District.) The Council is currently consulting on the Issues and Options and has published a series of eight topic papers in order to encourage discussion.

As part of the consultation the Council is holding a number of half-day Area Conferences, to discuss with local groups and other interested parties in more detail, issues relating to their area. You or your organisation have been invited to attend one of the following events:

- **Saturday 19th May 2007 at Victoria Hall, Saltaire from 9.00am – 2.00pm**
- **Wednesday 23rd May 2007 at Thornbury Centre, Bradford from 9.30am – 2.00pm**
- **Saturday 16th June 2007 at Riddings Hall, Ilkley from 9.00am – 2.00pm**
- **Saturday 23rd June 2007 at Carlisle Business Centre, Bradford from 9.00am – 2.00pm**

Lunch and refreshments will be provided.

Each event will include a number of short presentations to set the background to the new LDF Core Strategy. There will then be a number of workshops where a range of issues can be debated including:

- The scale and location of new development for housing, employment and leisure across the District, and the identification of broad areas where development should be restrained;
- The role of different settlements within the District;

Above all, however, this is an opportunity for those who are involved or have an interest in development planning matters to let us know what issues and policies you think the Core Strategy should be including and addressing.

If you wish to attend this event please fill in and return the enclosed booking form by **Friday the 4th May 2007**. Places are limited by the capacity of the venue so please book as soon as possible to avoid disappointment.

Further information on the Local Development Framework is available on the Council's website at www.bradford.gov.uk/planning by following the Local Development Framework link. Copies of the eight Core Strategy Issues and Options Topic Papers are available online and as reference copies in the Council's Planning Offices at Bradford, Ilkley, Keighley and Shipley. Hard copies of the topic papers will also be made available on request by contacting the LDF Group.

Even if you cannot attend the above event please feel free to send us your comments. The Council welcomes your views and will take these into account when developing the Preferred Options for the Core Strategy. Comments should be made in writing and sent to the following FREEPOST address:


Bradford Local Development Framework
FREEPOST NEA 11445
PO Box 1068
BRADFORD
BD1 1BR

Alternatively, comments can be marked 'Core Strategy Issues and Options Consultation' and emailed to ldf.consultation@bradford.gov.uk. Comments should be received at the very latest by 6th July two weeks after the last Area Conference.

Please note that representations cannot be treated as confidential and a schedule of all representations received will be published

Should you require clarification on any of the above or further information please contact Andrew Marshall on the number above or my colleague Isha Ahmed on (01274) 434544.

Yours faithfully,



Andrew Marshall
Group Planning Manager

4.0 BOOKING FORM

City of Bradford Metropolitan District Council

www.bradford.gov.uk

CORE STRATEGY STAKEHOLDER CONSULTATION EVENTS

Bradford Council is currently producing a new strategic planning document, called a Core Strategy that will form part of its Local Development Framework. This crucial document will influence the scale and location of development to be provided for housing, employment, leisure and retail across the district for the next 10 – 20 years.

If you have an interest or role in shaping the future planning of the district, you are invited to attend one of the following events to discuss the issues and give us your views:

Saturday 19th May 2007
9.00am – 2.00pm
Victoria Hall, Saltaire

OR

Wednesday 23rd May 2007
9.30am – 2.00pm
Thornbury Centre, Leeds Old Road, Bradford

OR

Saturday 16th June 2007
9.00am – 2.00pm
Riddings Hall adjacent to Christchurch, Riddings Road, Ilkley

OR

Saturday 23rd June 2007
9.00am – 2.00pm
Carlisle Business Centre, Carlisle Road, Bradford

1. Your Details

Name:	
Address:	
Organisation:	
Telephone:	
Email:	

2. Attendance *(please tick which conference you wish to attend)*

I will be attending the event at Victoria Hall on the 19th May

I will be attending the event at Thornbury Centre on the 23rd May

I will be attending the event at Riddings Hall, Ilkley on the 16th June

I will be attending the event at Carlisle Business Centre on the 23rd June

3. Dietary needs (Lunch will be provided. Please tell us if you have any special dietary needs)

4. Any special requirements. Please list below anything else you may need. We will try our best to meet your needs so that you can fully participate on the day.

5. How to book.

To book a place please fill in this form and return to:

Isha Ahmed
Local Development Framework Group
8th Floor Jacob's Well
Manchester Road
Bradford
BD1 5RW

Or Email: ldf.consultation@bradford.gov.uk. Please head your email 'Core Strategy Area Conference'

Alternatively, please ring on (01274) 432253

Please let us know if you can attend by Friday 4th May as places are limited.

Further details of the conference and a map will be sent to you if you with your booking confirmation. Please note each conference will focus on the issues as they relate to a particular broad area namely; Bradford City, Airedale (and villages) and Wharfedale

5.0 DELEGATE LIST

Andrew Marshall	Group Planning Manager, Bradford MDC
Isha Ahmed	Team Leader, Bradford MDC
Helen Longfield	Senior Planning Officer, Bradford MDC
Edward Broadhead	Planning Assistant, Bradford MDC
Helen Breen	Planning Assistant, Bradford MDC
William Cartwright	Planning Assistant, Bradford MDC

Cllr Peter Allison	Wilsden Parish Council
	Wilsden Parish Council
Jan Brownson	Drovers Way Residents Group
Robert Clunas	Save Horsfall Playing Fields
Jane Hughes	Assistant Shipley Area Co-ordinator
Mark Gladwin	Early Years & Childcare Service
Molly Kenyon	Saltaire Village Society
Mohameed Saleem Khan	Khidmat Centre
Kay Kirkham	Harden Parish Council
Beryl Learoyd	Save Horsfall Playing Fields
Ernie Lloyd	Bradford & District Senior Power
Chris Marshall	Natural England
Jessica Morgan	Mineral Planning Group
Cllr David Mullen	Steeton with Eastburn Parish Council
Steven Pullan	Sports and Leisure Service
Isobel Scarborough	
Mrs B M Smith	
Susan Stead	Bradford Urban Wildlife
Vera Swaine	Drovers Way Residents Group
Alan Sykes	Harden Parish Council
Janice Thornton	Neighbourhood Support Service
Jean Walker	Age Concern
Peter Warwick	Patient Public Involvement Bradford Teaching Hospitals
David Wilford	Holme Christian Care Centre
Gillian Wilson	
Rev Woodhouse	Holme Christian Care Centre

6.0 EVENT PROGRAMME

City of Bradford Metropolitan District Council

www.bradford.gov.uk

LOCAL DEVELOPMENT FRAMEWORK CORE STRATEGY ISSUES AND OPTIONS CONSULTATION EVENT

PROGRAMME

19 MAY 2007

VICTORIA HALL, SALTAIRE

9.00	Registration and Refreshments.
9.30	Welcome and Introduction: Andrew Marshall (Group Planning Manager) setting out the aims of the event and proceedings.
9.35	What is a Core Strategy: Andrew Marshall (Group Planning Manager) Short presentation introducing the Local Development Framework and Core Strategy. Including short DVD presentation.
9.50	Questions and Introduction to Workshops
10.00	Workshop Session 1: Developing a vision for the Bradford District. Your chance to discuss what you think are the important planning issues facing the district. Have we identified the right issues? Have we missed any?
10.45	Refreshments break.
11.00	Workshop Session 2: Your chance to discuss the key housing and employment issues facing the District and potential approaches to them. This workshop will be based around the location of development and the roles of different settlements in meeting housing and employment land needs. It will also provide the opportunity to discuss the implications of any potential approach.
12.30	Feedback from workshop session 2
12.45	Summary and where next: Andrew Marshall will summarise key issues raised on the day and set out the next steps in developing the LDF Core Strategy.
13.00	Lunch

7.0 POWERPOINT PRESENTATION

City of Bradford Metropolitan District Council

www.bradford.gov.uk

BRADFORD LOCAL DEVELOPMENT FRAMEWORK

CORE STRATEGY – ISSUES & OPTIONS

Airedale Stakeholder Event

19 May 2007

Victoria Hall, Saltaire

Department of Regeneration

City of Bradford Metropolitan District Council

www.bradford.gov.uk

Welcome and Event Outline

City of Bradford Metropolitan District Council

www.bradford.gov.uk

Event Outline

- 9.30 Welcome and Introduction: Andrew Marshall (Group Planning Manager)
- 9.35 What is Core Strategy? Andrew Marshall (Group Planning Manager)
- 9.50 Questions and Introduction to workshops
- 10.00 Workshop Session 1. Developing the Vision
- 10.45 Refreshments break
- 11.00 Workshops Session 2 Meeting Development Needs
- 12.30 Feedback from workshop session 2
- 12.45 Summary and where next
- 13.00 Lunch

City of Bradford Metropolitan District Council

www.bradford.gov.uk

Event Aims and Objectives

- Raise awareness of the Local Development Framework in particular the core strategy and why it is important.
- Engage with local groups and organisations to explore the key issues facing the district over the next 10-20 years and the possible options for tackling them.

City of Bradford Metropolitan District Council

www.bradford.gov.uk

Event Aims and Objectives

Participation and engagement which ensures as far as practical the Core Strategy:

- Reflects the needs of the district and its communities
- Is technically robust and based on sound information
- Enjoys a broad consensus

City of Bradford Metropolitan District Council

www.bradford.gov.uk

What is the Core Strategy?

City of Bradford Metropolitan District Council

www.bradford.gov.uk

Why is it Important? (DVD)

City of Bradford Metropolitan District Council

www.bradford.gov.uk

Presentation Themes

- Local Development Framework for Bradford
- The Process
- Core Strategy
- Current Consultation

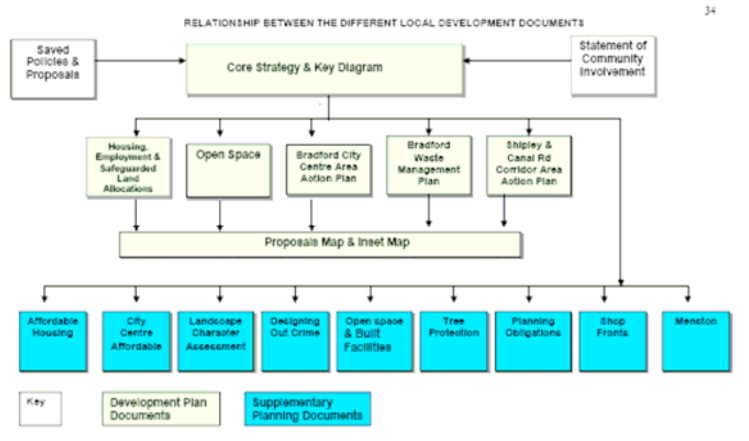
Local Development Framework for Bradford

- Adopted Replacement Unitary Development Plan (October 2005)
- Local Development Scheme for Bradford (Revised March 2007)
- Key Documents
 - Core Strategy
 - Allocations (housing, employment and safeguarded land)
 - Open Space
 - City Centre Area Action Plan
 - Waste

Local Development Framework for Bradford

Regional Spatial Strategy for Yorkshire and the Humber:

- Sets out the broad approach to development and change in region
- Identifies the role of Bradford in Leeds City Region
- Sets the number of houses Bradford should provide for



LDF Process

Key stages of LDF preparation:

- Pre production
- Issues and options
- Preferred options
- Submission
- Examination
- Binding Report
- Adoption

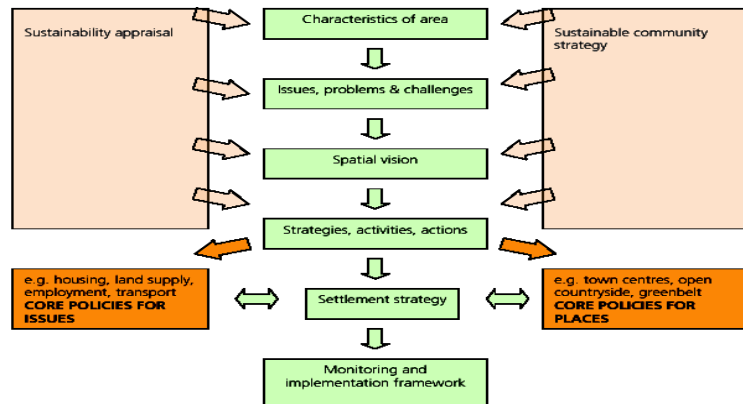
Core Strategy

- First DPD sets out the ‘big picture’ through a spatial picture and vision
- Other LDF documents deliver a detailed approach in line with Vision, strategy and Core Policies
- Not site specific but needs to broad locations of development, change and restraint etc
- Succinct written statement with spatial policies supported by a key diagram

Core Strategy

- **Executive Report 6 February 2007**
- **Set of 8 Topic Papers**
 1. Introduction and Background
 2. The Spatial Vision and Strategy for Bradford
 3. Meeting the needs for dwellings in the District
 4. Economy and Jobs
 5. Transport and Accessibility
 6. Community Facilities
 7. Environment
 8. Waste Management

figure 1: core strategy key elements



Vision (Part 1)

A sustainable District which ensures the well being of its residents and visitors through:

- A vibrant high skill economy fully integrated with the wider city region and northern economy focused on delivering the potential of the city of Bradford and Airedale and spreading those benefits to the whole district.
- Enhanced role of Bradford City as the key regional centre with the city centre a thriving sub-regional shopping, commercial and transport hub with a balanced and strong district wide economy

City of Bradford Metropolitan District Council

www.bradford.gov.uk

Vision (Part 2)

- A Well connected District where everyone has access to decent affordable housing, jobs, health and community facilities.
- Continued protection and enhancement of its natural environment, heritage and diversity through high quality development and land management
- High quality new development, which contributes to the renaissance of the district which reinforces and builds on the existing character and promotes sustainable design

City of Bradford Metropolitan District Council

www.bradford.gov.uk

Consultation Process

- **Area Stakeholder Conferences (May/June)**
 - Airedale (19th May)
 - Bradford (23rd May and 23rd June)
 - Wharfedale (16th June)
- **Topic Stakeholder conferences**
 - Housing (22nd March)
 - Transport (28th June)
 - Waste (30th March)
 - Economy and jobs (linked to Economic strategy)

City of Bradford Metropolitan District Council

www.bradford.gov.uk

Consultation process

- **6 weeks from 16 February to 30 March (extended)**
- **Targeted consultees**
- **Partnerships and networks**
- **Difficult to reach groups**

City of Bradford Metropolitan District Council

www.bradford.gov.uk

Questions

City of Bradford Metropolitan District Council

www.bradford.gov.uk

Introduction to Workshops

City of Bradford Metropolitan District Council

www.bradford.gov.uk

Where Next?

- **Record and consider consultation feedback**
- **Consider new evidence**
 - Local Housing Assessment
 - Urban Potential Study
 - Flood Risk Assessment
 - Employment Needs Assessment
- **RSS Panel Report and Modifications**

City of Bradford Metropolitan District Council

www.bradford.gov.uk

Where next?

City of Bradford Metropolitan District Council

www.bradford.gov.uk

Where Next?

- **Feedback Workshops (Autumn)**
- **Refined development Options (Autumn)**
- **Preferred Options (January 2008)**
 - Identify chosen approach
 - Set out reasons for discounting other options
- **Housing and Employment Allocations DPD**
 - Issues and Options Spring 2008

City of Bradford Metropolitan District Council

www.bradford.gov.uk

Web Information

- **Council general planning**
www.bradford.gov.uk/planning
- **Bradford Local Development Framework**
www.bradford.gov.uk/environment/land_and_premises/localdevelopment_framework/
- **Department of Communities and Local Government**
<http://www.communities.gov.uk/>
- **Planning Advisory Service**
www.pas.gov.uk

City of Bradford Metropolitan District Council

www.bradford.gov.uk

Contact Information

- **Local Development Framework Group**
 - local.development.framework@bradford.gov.uk
 - ldf.consultation@bradford.gov.uk
 - 01274 434050

8.0 PROMPTING SHEET

Workshop Session 1 – Prompt Sheet

The facilitator should ask all delegates to briefly introduce themselves (i.e. name, the organisation they represent and what their interest is in planning).

The facilitator should state that their role is to encourage debate and to inform the group that a note will be taken of the meeting - but that this will be a general note and not attributable to individuals.

Developing a Vision for the Bradford District

The aim of this workshop is for delegates to give their views on the planning issues that should be contained within the Core Strategy spatial vision.

The following issues have been placed on cards as a series of 'unloaded' headers, with the aim of group's ranking each according to whether they feel they are of high or low importance. Each card will need to be ranked on an A0 foam board. The cards are of the big issues facing the district and are what we think the document should be tackling. The cards are of big issues and are as follows:

- Growing local economy
- Socially inclusive and vocal communities
- Choice of housing opportunities
- Role of the City Centre
- High quality design
- Historic and the natural environment
- Access to public transport
- Transport infrastructure investment (connections within and outside district)
- Role of Regeneration
- Role of the Green Belt
- Access to leisure and recreation
- Access to housing, employment, shopping, health, culture and education
- Climate change
- Sustainable waste management
- Natural and renewable resources

(The above list has been lifted from section 4, Para 4.4 of Topic Paper 2)

Delegates should be encouraged to add any issues that they feel we have missed.

Ask questions such as:

Q. What does this issue mean to you in terms of Bradford?

Q. How important is this issue?

Q. Have we missed any issues that you think are important and should be included?

At the end of the workshop a digital photo will need to be taken of the board – as it will be used again at the other events.

Workshop Session 2 – Prompt Sheet

Location of Development & The Role of Settlements in Meeting Needs for Employment & Housing

The aim of this workshop is for delegates:

- a) To devise an approach to locating development for housing and employment across the district, and
- b) To think about the role that each settlement will play in meeting needs for housing and employment.

In this workshop delegates will be asked to place counters on an A0 foam board. For housing, each colour counter represents a different number of houses. Housing counters should tally up to approx 31,000¹ dwellings. (31,000 dwellings + housing requirement figure in draft RSS to 2021)

In terms of employment, the RSS recognises Bradford as one of the main drivers in delivering a growing regional economy. E.g. each day more people travel to Bradford district to work then leave to work elsewhere. Over 80% of firms within the district are smaller, made up of 10 employees or less. Employment counters are of various colours these refer to the no of employees and do not need to tally, as there is no specific requirement for employment.

Location of Development

The facilitator should introduce the workshop by referring to the 31,000 dwellings. The aim of the workshop is to come up with an approach on how these should be distributed across the district,

The facilitator does not need to go into each of the spatial strategy options identified in Topic Paper 2, Section 5, para 5.10 – 5.14 when introducing the workshop, as this would be steering the debate. However on a personal level the facilitator will need to know the Core approach² (para 5.11). This states that development should be:

- **Focused within Bradford City, Shipley & Baildon** – due to good transport connections.
- **Larger settlements in Airedale (Keighley, Bingley & Silsden)** – Focus for economic development and limited residential development to meet local needs.
- **Larger settlements in Wharfedale (Ilkley, Menston, Burley)** – limited economic developments and limited residential developments to meet local needs.
- **Other well located larger settlements on the urban fringe (Queensbury, Thornton)** – limited economic development and limited residential developments to meet local needs.
- **Small less well-located villages (Cullingworth, Wilsden & Oxenhope etc)** – limited economic development and limited residential development to meet local needs.
- **Priority in all above cases to previously developed land unless a Greenfield location is more sustainable.**

¹ Please note that this figure is likely to rise, in the final RSS, by an extra 3,000 dwellings based on more recent population projections.

² The Core Strategy Preferred Option may have apportionments for housing in each of the above areas as this appears to be the approach that the Government Office is promoting.

The facilitator should get delegates to think about all the above areas in meeting needs for housing and employment and not just their own locality.

Option A – C (para 5.13) are variations of the Core Approach. Briefly,

Option A – Focused Dispersal

- Focus development in main urban area of Bradford (intensification)
- Development on allocations in lower order settlements with good transport infrastructure
- Use of safeguard land

Option B

- All settlements make provision to meet district's needs

Option C

- New development focused in key locations potentially involving substantial changes to the Green Belt.

Role of Settlements

Delegates should be asked to think about the role of settlements in meetings needs for housing and employment. The following location principles could be used as a guide:

- Should the majority of development take place in the existing built up main urban area?
- Should smaller settlements on good transport routes provide a commensurate level of development?
- Should development in less well-located smaller settlements be limited to meet local needs?
- Accessible locations for new development
- Priority to previously developed over Greenfield land.

Once delegates have come up with an approach the facilitator will need to discuss the implications of such an approach. For example,

- If some settlements have no housing development this will have implications for affordable housing, local 1st time buyers may have to move away, etc.
- Green Belt releases on edge of main urban area if Bradford is chosen as the only location.
- Should employment land be allocated/continue to be protected within villages?

At the end of the workshop a digital photo will need to be taken of the board – as it will be used again at the other events.

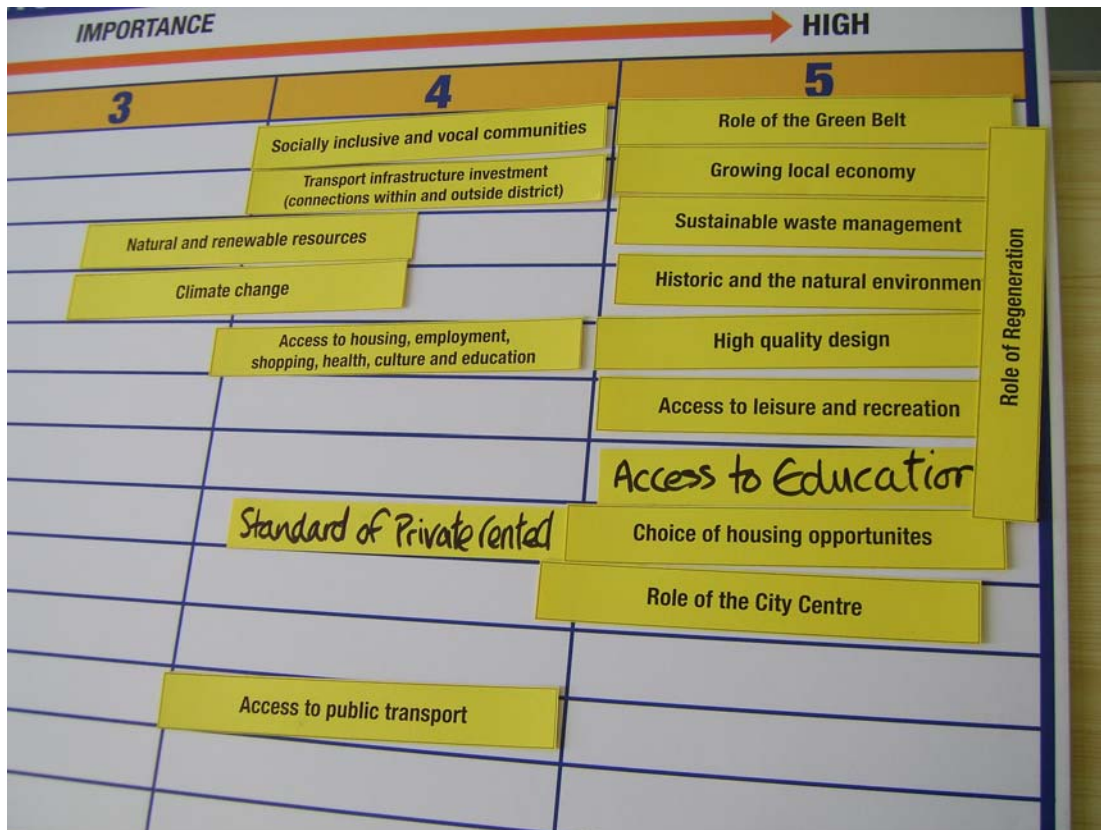
9.0 FACILITATORS NOTES

WORKSHOP SESSION:	Key Issues
TIME:	10.00 to 10.45
GROUP:	A
FACILITATOR:	Andrew Marshall
NOTE TAKER:	William Cartwright

Introduction

The members of the group, the facilitator and the scribe introduce themselves

- Socially inclusive and vocal communities – Importance 4
 - The group were concerned that different communities and people had varying levels of capacity to effectively participate and be heard
 - There was concern that for the poorest and most deprived people engaging in planning the District was ‘not on their agenda’ and that some communities did not want to be engaged
 - Communities of interest need to be identified and ‘picked-up’
 - People only want to engage when applications that effect them are made
- Role of the greenbelt – Importance 5
- The greenbelt is important for the whole District including the inner city as it provides recreational opportunities
 - Too bigger issue for this event
- Transport infrastructure and investment – Importance 4
 - Communication with the public regarding future proposals needs to be better
 - If connecting the city centre is not possible by train there needs to be a ‘hopper’ bus service around the city centre and between the stations
 - For the poorest people public transport is of the utmost importance
 - One member did not think that this was a major issues compared to other cities although there were particular ‘hot spots’ that needed to be addressed
- Sustainable waste management - Importance 5
 - SWM is undoubtedly a good thing but it’s difficult to achieve
 - We need more farmers markets to help people buy local produce
- Historic and Natural Environment – Importance 5
- High Quality Design – Importance 5
- Access to leisure and recreation – Importance 5
- Access to education (new suggestion – too larger issue to combine) – Importance 5
- Access to housing, employment, shopping, health (education removed) – Importance 5
- Choice of housing opportunities – Importance 5
- Standard to private rented housing needs to be addressed (new suggestion although it is acknowledge to be part of the above) – Importance 4
- Role of city centre – Importance 5
- Role of regeneration – Importance 5 (this is a cross cutting issue)
- Access to public transport – Rank 4 (For some people 5)
- Issues relating to rights of way and public foot paths need to be addressed – No rank given



WORKSHOP SESSION: Key Issues
TIME: 10.00 to 10.45
GROUP: B
FACILITATOR: Isha Ahmed
NOTE TAKER: Edward Broadhead

Introduction

- The members of the group, the facilitator and the scribe introduce themselves
- Outline the workshop aims and approach.
- Isha took notes of each persons interests

The following points were made in the workshop (but not necessarily in this order).

- No meeting place for the community's elders to meet exists. Bradford Odeon used to serve this purpose.
- We're not valuing the heritage in the centre, things are going against the current UDP in terms of building conservation, this should not be passed onto other development plans.
- The relation of the city centre to Airedale is no better than the relationship it also to Leeds. Bradford is the worst centre for shopping and an embarrassment.
- Regeneration plans appear to be just marketing propaganda as city centre does not attract residents due to its poor condition and lack of shopping facilities.
- Bradford should not attempt to compete with Leeds.
- Park at the Heart is a good, family orientated option. The city centre should be the focal point. Need to attract and encourage other groups.

- *The development taking place was described to be 'piecemeal' as there is too much going on at once in a sporadic fashion.*
- In terms of transport, the city centre of Bradford needs to focus on disability issues and accessible/affordable public transport in order to encourage people to visit the city. A flat rate service, as present in London was suggested. Also the level of service which exists in other areas of Bradford should be retained. The city centre should be a transport hub 30 years from now.
- We need to make reference towards a sustainable local economy in the Core Strategy.
- Housing that meets need rather than just demand.
- Delegates expressed concern over the increasing population of this country and region due to a high birth rate.
- It was suggested that in terms of affordable housing, old houses should be regenerated before new ones are built.
- Delegates noted that housing needs vary across the district and it's important to recognise that people need different types depending on their individual circumstances. However, such circumstances can also prevail at the community scale. For example, those areas with good transport links often attract younger people for the purposes of work. Thus, affordability issues are created.
- With the general increase on younger people requiring households in such areas, both availability and affordability become fundamental issues that need addressing.
- Smaller, independent shops, which provide easy access for the elderly, should be provided rather than supermarkets which would have a detrimental impact on the local economy.
- Development's impact on the environment should be high on the agenda. Wildlife areas should remain protected under the new system.
- Brownfield sites should be built upon before greenfield ones.
- Even less desirable areas of greenfield should be retained.
- More public consultation is needed when historic buildings are to be demolished.
- UDP should have lasted for 10 years.
- Anti-social behaviour is a problem.
- There's nothing to come to Bradford for.
- No more roads in the Aire Valley, only Bradford.
- Access to leisure and recreation is a problem.

WORKSHOP SESSION:	Key Issues
TIME:	10.00 to 10.45
GROUP:	C
FACILITATOR:	Helen Longfield
NOTE TAKER:	Helen Breen

Introduction

- The members of the group, the facilitator and the scribe introduce themselves
- Outline the workshop aims and approach

The following points were made during the workshop (but not necessarily in the order set out below).

- All issues are equally important, but it has implications that we need to think about – regeneration is a good thing but has negative consequences for some.
- All issues are important, but good transport and access to good public transport is they key. This ties into climate change. We need appropriate transport to match people's needs, walking/cycling not appropriate for elderly people.
- Need to address diminution of good public transport after 6pm.
- Better links need to be made between buses and trains, need better integration.
- People say Bradford has good public transport network yet 80% of Steeton residents are not within 10 minutes walk of a bus route. Disparity.
- We need things that make a community more sustainable like good shops.
- The role of the city centre is Bradford's vision; the outer ring of settlements seems to be pushed back and focus is on one area.
- There is an over-egging of the argument for walking and cycling but public transport is the key, not everyone can cycle/walk to the train.
- Need to identify why traffic is building up in certain areas.
- People are increasingly working in shift patterns – difficult to get to work on public transport.
- What is affordability? The choice of housing needs to be a proper choice.
- What is the role of the city centre?
- Should be more jobs than housing.
- Parking is a problem.
- The city has a social function also, especially for elderly people.
- Problem with waste management – some houses it is not possible to have multiple number of waste bins for recycling.
- To increase recycling we need to find better methods, smaller bags and boxes similar to what happens in the Aire Valley. Need to find methods that are more attractive and that will encourage people to recycle.
- Will better transport links impact on the greenbelt?
- The rate of development in the built up areas is so that there will be no breathing space left; need to protect areas of greenspace. Need to ensure there is enough recreation space for all the housing.
- Need protection of greenspace within Bradford, it is being nibbled away, for example, the Bradford Canal will not only regenerate

brownfield land but will destroy a lot of greenspace which is home to wildlife.

- Brownfield redevelopment should be a priority before development of Greenfield.
- People also need to feel safe, especially in parks/recreation spaces.
- Nothing will happen without a good local economy.
- All the issues need to be tackled as a whole.
- We need to have a positive relationship with Leeds.

DEVELOPING A VISION - KEY ISSUES			
IMPORTANCE			
2	3	4	5 HIGH
		Role of the City Centre	Access to public transport
		Role of Regeneration	Access to housing, employment, shopping, health, culture and education
		Access to leisure and recreation	transport infrastructure investment (connections within and outside district)
			Generosity affordable housing
			Choice of housing opportunities
			Minimal road building
		Role of the Green Belt	
			Historic and the natural environment
		Socially inclusive and vocal communities	Green space
		Growing local economy	Safety
		Natural and renewable resources	
		Climate change	
		High quality design	
		Sustainable waste management	
		Relationship with Leeds (+ve)	

WORKSHOP SESSION: Location of Housing and Employment
TIME: 11.00 to 12.30
GROUP: A
FACILITATOR: Andrew Marshall
NOTE TAKER: Will Cartwright

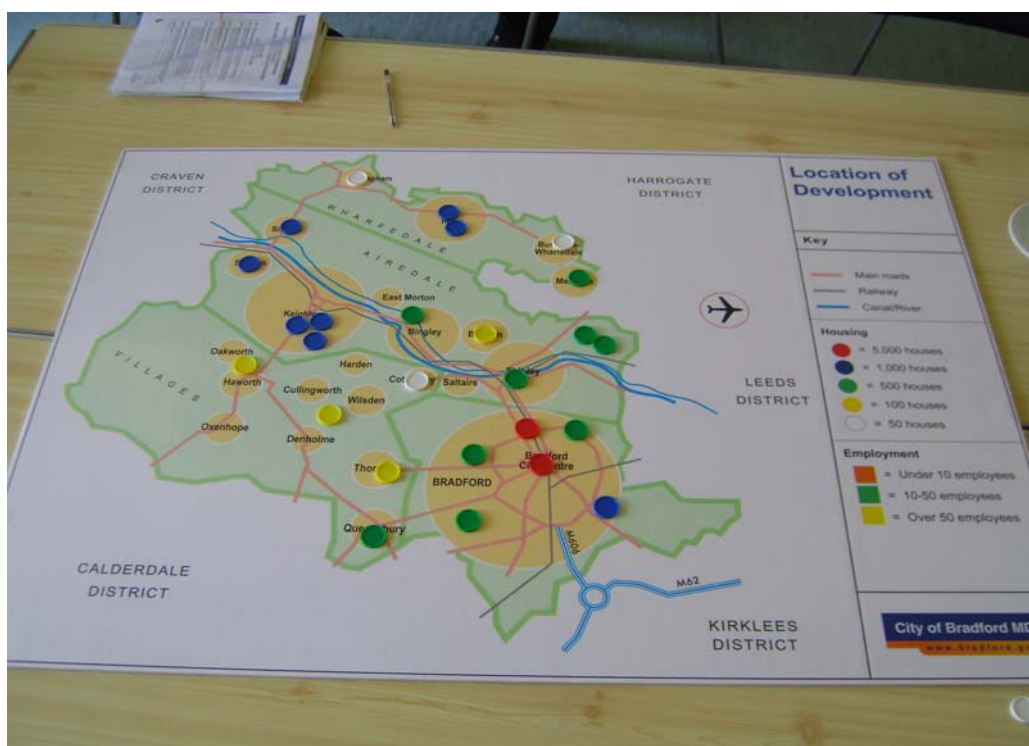
Introduction

- The members of the group, the facilitator and the scribe introduce themselves
- Outline the workshop aims and approach
- We need to identify enough land for 31,000 houses

The following points were made during the workshop (but not necessarily in the order set out below).

- Delegates expressed concern that it was difficult to plan the distribution of housing as they knew little about brownfield capacity, viability and needs.

- In south Bradford there is a 3km buffer zone around a chemical works which prevents residential development. If we build incinerators in the future will they also require buffer zones, and if so do we want such facilities?
- Delegates thought that planning should differentiate between need and demand (which is created by money) to prevent properties being bought by investors and left vacant.
- One delegate thought that many more bungalows and similar properties, which appeal to the elderly, were needed to promote downsizing and the freeing-up of larger family homes.
- All the rungs of the property ladder need to be looked at. Problems are being created because people are not moving up and then down the ladder in the normal way due to prices and shortages of suitable housing.
- The group thought that more specialist housing was required for the elderly, mentally ill, homeless etc.
- The group thought that it would be good to see housing development along the Canal Road Corridor, however any new housing developments must incorporate community facilities
- Where large sites are split between developers there needs to be pots of money top bring together S.106 contributions
- One delegate was concerned that the expanding population was primarily Asian and that issues relation to ethnic mix were important
- Delegates also thought we needed to think about the needs of the new immigrants coming from Eastern Europe.
- Concern was expressed that Keighley was even more segregated than Bradford
- Single person accommodation for hospital workers was considered to be a problem that needed addressing.
- Homes ought to be both high quality and sustainable
- There should be limited development in the villages (excluding Thornton and Queensbury) perhaps 200 new homes
- Should a new town be created? Is Esholt in the right place, will the proposed train station at Apperley Bridge be built?
- Ilkley should not be protected from development and should accommodate its fair share.
- There doesn't seem to be capacity to accommodate 31,000 houses
- Small high streets need free cash machines to thrive



WORKSHOP SESSION:	Location of Housing and Employment
TIME:	11.00 to 12.30
GROUP:	B
FACILITATOR:	Isha Ahmed
NOTE TAKER:	Edward Broadhead

Introduction

- The members of the group, the facilitator and the scribe introduce themselves
- Outline the workshop aims and approach
- It is important to meet the needs of the public when allocating land for housing and employment.
- We need a firm approach as to where we locate development in the district and an approach for how we do.
- The UDP was adopted in October 2005 and even though housing projection and phasing should have lasted for 10 years, due to the inception of LDFs and the emergence of draft RSS policy, the system has changed, and in turn housing requirements at a district level.
- Although Bradford Council made representations at the Examination in Public in relation to housing requirements, the changes in the planning system have not only dictated that a new regional development plan be produced (RSS), but also that this new development plan takes account of recent statistical data in relation to housing projections, and subsequently incorporates it into the requirements of the plan.
- Employment in the region is important for the local economy.
- One needs to think of more Brownfield sites for locating development, mill developments for example.
- City Centre living is good, although not a new concept, also above shops there are many vacant rooms.
- Dilapidated buildings along side the canal in Bingley should be considered for conversion.
- Existing buildings should be converted, instead of new builds erected.
- Locate new units next to the canal when resurfaced.
- Lots of Brownfield land exists in Baildon.
- Aim for a dispersed pattern for new housing/employment.
- Look at Brownfield sites first and foremost.
- Some exist in Wilsden, behind in Lingbob roundabout.
- Already had a fair share of development in Eldwick.
- Keighley needs renovation, as it is very dense at the moment.
- The baseline evidence needs to outline the location of employment use and demand.
- What about immigrant population, Asian population, housing facilities etc.
- 1560 units to 2011 may meet housing needs, but you won't then necessarily meet green space needs.
- *The group as a whole didn't agree with accommodating 31,000 units within Bradford District.*
- Encroachment upon moor land is occurring.
- Houses in the villages have huge back gardens which are under utilised.
- Yes to more development in Keighley, improve the existing housing also, got good shopping centre and is close to the Bingley bypass.
- District has only got a finite number of mills for development.
- Bradford is doing well on conversions, and recycling Brownfield land, why break the green belt?

- Tourist based villages such as Ilkley and Howarth need new housing to accommodate these people, problem is hotels are classed as employment rather than residential use.
- Neglected M606 corridor as a possible employment area. This area would reduce the number of people having to travel long distances to work.
- Low Moor or Wyke? – Many mills there.
- Too many employment allocations are being developed for housing.
- More employment is needed in the City Centre.
- Climate change is major issue to building on flood plains.
- Transport infrastructure needs to be upgraded to handle the added pressures brought about by higher numbers of houses being located in the area.
- Will companies want to locate in these areas?
- Need more employment opportunities in Wharfedale.
- What is the projected demand for various housing tenures?
- Employment should be distributed evenly throughout Airedale.
- More stair-casing housing schemes.
- Give greater protection to parks/recreation areas.
- There are underutilised industrial estates in Silsden.
- Need more sheltered housing for the elderly.
- There's a mismatch between the housing needed and that offered.
- There's limiting public transport in the villages.
- Contaminated land is a consideration but is expensive.
- Facilities in any area are bourn out of demand.
- Need well connected and affordable transport.



WORKSHOP SESSION:	Location of housing and Employment
TIME:	11.00 to 12.30
GROUP:	C
FACILITATOR:	Helen Longfield
NOTE TAKER:	Helen Breen

Introduction

- The members of the group, the facilitator and the scribe introduce themselves
- Outline the workshop aims and approach

The following points were made during the workshop (but not necessarily in the order set out below).

- Should put all 31,000 in redundant mills.
- But where do people want to live?
- The majority should go on Brownfield sites.
- It should be apportioned out according to current settlement size (this was the consensus among the group)
- Need to look at services/community facilities/transport networks.
- Development should be located near to good public transport nodes.
- But not near the motorway.
- Need to be close to jobs, people cannot afford to travel long distances to employment.
- Need to improve rail links – Thornton/Queensbury – reinstate the railway.
- Local housing development should be linked to employment development to ensure sustainability.
- Airedale General Infirmary in Steeton is a big employer in the area but a lot of the staff are not local and come by train. The area is unaffordable.
- Employment land that employs a large number of people should be close to public transport nodes.
- How many jobs do we need to provide for? And what type of jobs? Need to match jobs to local skills.
- What are the Council doing to attract firms into the city centre? – Too much concentration of residential/entertainment.
- Should encourage new industry/new technology.
- We have expertise here but no longer the manufacturing – shifted to developing world.
- Maybe the Council should attract small firms to the District.
- Should we focus on the service sector – health and education are big employers.
- Need financial support for areas that are suffering economically.
- Is there enough room for all these houses? – Urban Capacity Study (HL explained).
- Need to create a city where people want to live.
- Need to tighten up the appeal process so that applications for Greenfield sites are not overturned at appeal.
- Do not want to lose all the greenspace in the built-up areas.
- HL suggested new development in Esholt – need relevant facilities/services in place and good access.

- Do not necessarily need “limited economic development” in every small settlement if there are good transport connections to other small settlements.
- Development in Bradford should not be at the expense of green lungs.
- Need to understand what local people want.
- Issue regarding who pays for creation of new schools – S106 process explained.



10.0 EVALUATION FORM

FEEDBACK FORM

LDF CORE STRATEGY – ISSUES AND OPTIONS STAKEHOLDER CONSULTATION EVENT

Please spend sometime to fill in the form below. Your feedback will help us to improve future events. Thank you.

Presentations/ Speakers

Was the level of detail provided appropriate?

1 = not enough detail and 5 = too much detail (please circle)

1 2 3 4 5

Were the presentations an appropriate length?

1 = too short and 5 = too long (please circle)

1 2 3 4 5

Please rate the overall quality of the presentations and speakers

1 = poor and 5 = excellent (please circle)

1 2 3 4 5

Was the content of the DVD appropriate for the event?

1 = not enough detail and 5 = too much detail (please circle)

1 2 3 4 5

Workshop Sessions

Were the workshops an appropriate length?

1 = too short and 5 = too long (please circle)

1 2 3 4 5

Please rate the overall quality of the facilitators

1 = poor and 5 = excellent (please circle)

1 2 3 4 5

Organisation

Please rate the overall organisation and management of the event on the day

1 = poor and 5 = excellent (please circle)

1 2 3 4 5

Please rate the communication and background material provided leading up to the event

1 = poor and 5 = excellent (please circle)

1 2 3 4 5

Venue

Was the venue convenient and easy to get to?

1 = poor and 5 = excellent (please circle)

1 2 3 4 5

Please rate the overall quality of the venue?

1 = poor and 5 = excellent (please circle)

1 2 3 4 5

Please identify the best features of the event

.....
.....
.....
.....
.....

Please identify any areas for improvement

.....
.....

.....
.....
.....
.....

Thank you once again for your time, please hand this sheet in

11.0 FEEDBACK ANALYSIS

RESULTS

Fourteen feedback forms were completed and returned.

ANALYSIS

Workshop Sessions

The workshop sessions were considered to be the highlight, with many delegates commenting on their productivity due to the diverse range of people present. However, many delegates commented that the length of time allowed for them could have been extended. The facilitators received very good feedback.

QUESTION	RESULTS				
	1	2	3	4	5
Presentations/ Speakers					
Q1) Was the level of detail provided appropriate? (1 = not enough, 5 = too much)	0	1	7	3	3
Q2) Were the presentations an appropriate length? (1 = not enough, 5 = too much)	1	1	7	3	2
Q3) Please rate the quality of the presentations and speakers (1= poor, 5 = Excellent)	1	1	3	5	4
Was the content of the DVD appropriate for the event? (1= not enough detail and 5= too much detail)	1	5	5	2	1
Workshop Sessions					
Q4) Were the workshops an appropriate length? (1 = too short, 5 = too long)	0	3	5	5	0
Q5) Please rate the overall quality of the facilitators (1= poor, 5 = Excellent)	0	0	1	7	6
Organisation					
Q6) Please rate the overall organisation and management of the event on the day (1= poor, 5 = Excellent)	0	0	3	6	5
Q7) Please rate the communication and background material provided leading up to the event (1= poor, 5 = Excellent)	0	1	6	5	2
Venue					
Q8) Was the venue convenient and easy to get to? (1= poor, 5 = Excellent)	0	0	3	6	5
Q9) Please rate the overall quality of the venue? (1= poor, 5 = Excellent)	0	1	4	5	4

Organisation

The organisation of the event was deemed to be of a very good standard.

Venue

The acoustics and lighting of the venue did not help the presentation. Despite this, the location of the event scored highly due to its convenience.

BEST FEATURES OF THE EVENT

The best feature of the event was deemed to be the workshops and the facilitators, see above.

AREAS FOR IMPROVEMENT

Many delegates suggested that the workshops could have been longer. One person required more technical information about the constraints and would have preferred for the debate to concentrate less on housing.

CONCLUSIONS/ LEARNING POINTS

- Points of debate could have been more specific to avoid the discussion going off topic and over-running the time period which was allocated.
- Future opening talks should involve less detail delivered at a slower pace to ensure all delegates have a clear understanding.

Produced by the
City of Bradford Metropolitan
District Council

Local Development
Framework Group

Summer 2007

