

IMPLEMENTING THE BIG IDEA

The Big Idea in the Children and Young People's Plan states "Children's Services will be provided locally wherever possible and organised around the needs of the child or young person rather than professional or existing agency boundaries".

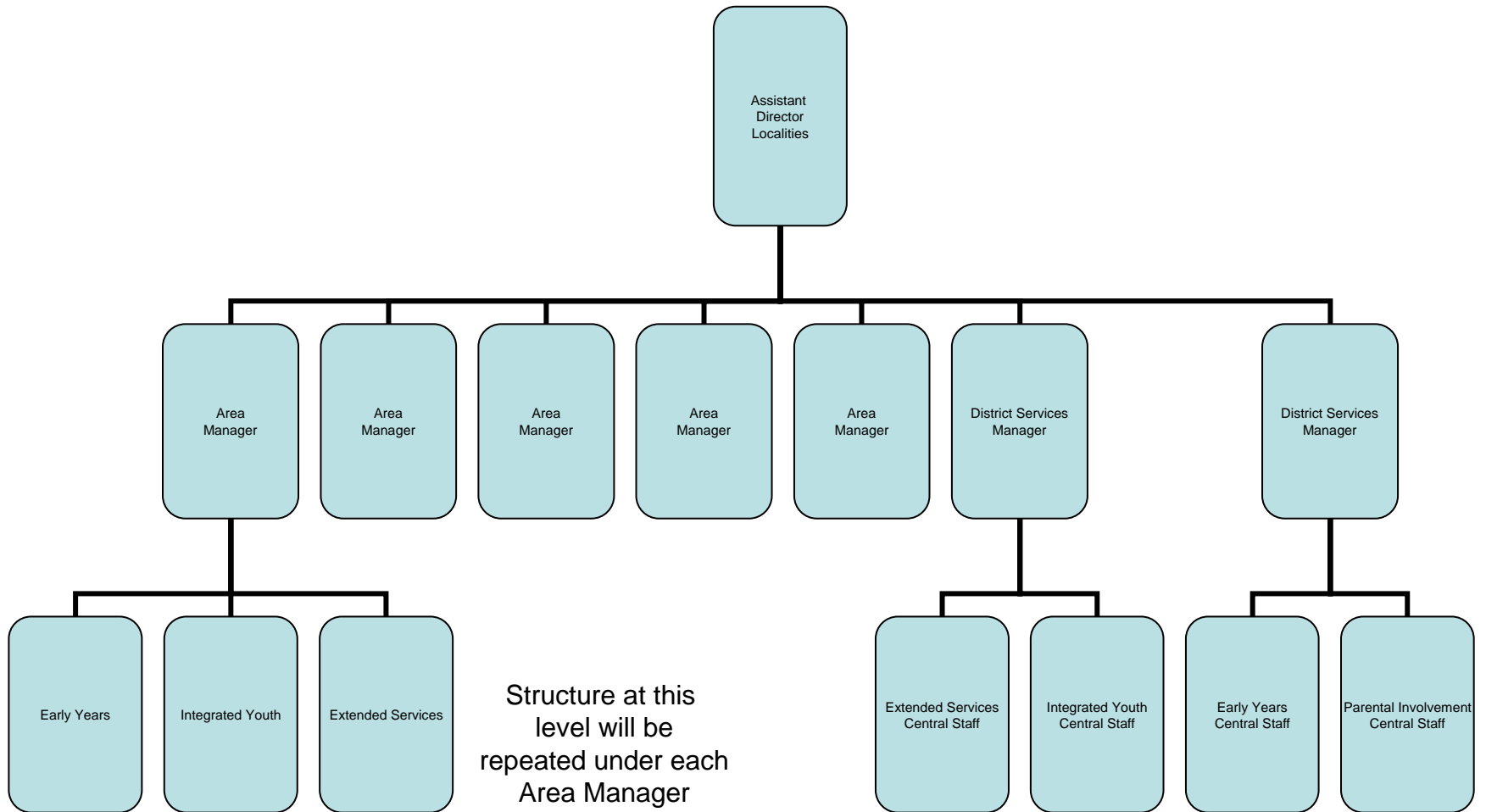
LOCALITY DELIVERY BY COUNCIL SERVICES

- Early Years and Childcare Services
- Children's Centres
- Family Centres
- Play
- Extended Services/Schools
- Parental Involvement
- Integrated Youth support
- Youth Service/Connexions

Services that are;

- Universal
- Preventative
- Early intervention

Localities Structure



Key Staff

Area Managers -

Keighley - Carolyn Hargreaves

Shipley - Christine Clavering

North - Mark Nicholas

West - Anne MacKay

South - Mark Anslow

District Service Managers -

Sue Duffy -

Integrated Youth & Extended Services

Anne Manns -

Early Years, Childcare, Play and Parental Involvement

Early Years, Childcare & Play

- Providing information, advice and training for new and existing childcare providers across the District.
- Supporting implementation of the Early Years Foundation Stage from September 2008 and transition for childcare providers to the new Ofsted registers
- Implementing actions within the Childcare Sufficiency Plan
- 33 Children's Centres opened in the 30% most disadvantaged areas, 6 of which are children's centre plus settings. Phase 3 Children's Centre programme in the planning stage
- Delivery of play events and play pod sessions, including and together with targeted play work with vulnerable groups

Integrated Youth Support

- Delivering through 103 projects
- 17,222 different young people were worked with by Youth Workers in 2007/08 = 35.7%
- 97% of young people surveyed were “very satisfied” or “satisfied” with their youth provision
- Youth Work in Bradford was described by Ofsted in January 2008 as “Good with outstanding features”
- Delivers universal provision through youth clubs and detached street-based projects
- Delivers targeted support through specialist provision e.g. YIP’s, PA’s, Keyworkers etc.

Extended Services & Parental Involvement

- 69% of Primary Schools and 79% of Secondary Schools deliver the full core offer
- 14 Localities clusters of schools support schools to work in partnership
- 80 Parental Involvement Workers
- Evidence shows that engaging parents in learning raises the level of attainment of children
- Parental Involvement Workers have a very positive impact on behaviour and attendance in schools

The contribution of tier 1 and 2 services in localities to the agenda of prevention and early intervention is immense. They provide the bedrock of services that build resilience but also enable professionals to identify and anticipate future support needs and the implement swift and easy access pathways.

The Future of Play

- Integrated approaches.
- Key role in prevention and early identification.
- Inclusion agenda.