



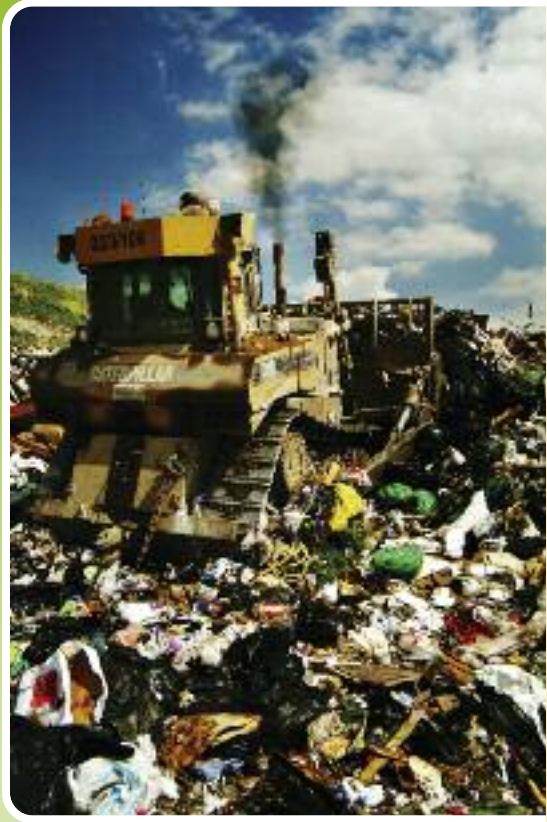
# The A-Z of recycling





The amount of rubbish we produce in the Bradford district is an ever increasing problem. It is projected that the amount of waste produced will increase by approximately 3% every year. Every 8 months the UK produces enough waste to fill Lake Windermere which is the largest lake in England.

**A lot of Bradford district's rubbish is currently landfilled, however most of the domestic waste could be reused or recycled.**



The district has been set a government target to recycle 30% of its waste by 2010. In order to achieve this target all residents need to reduce the amount of waste they create. Recycling is now seen as the normal thing to do with more and more people doing their bit to look after the place where they live.



## Reduce

It is important that we take action to reduce the amount of waste that we are producing and throwing away. There are several ways to reduce your waste such as: buying products with less packaging, buying loose fruit and vegetables, using a lunch box instead of cling film and bags.

If you feel that the products you buy have excessive packaging, please write to the manufacturer to inform them.

Most households receive a large amount of unsolicited junk mail. You can reduce the amount of junk mail by registering with the **Mail Preference Service**.

This service can remove your name from up to 95% of direct mail lists. Unfortunately it will not stop mail that has been sent from overseas, un-addressed mail or that addressed to "The Occupier".

To register: visit

[www.mpsonline.org.uk](http://www.mpsonline.org.uk)

Tel: 0845 703 4599

or write to –

**Mailing Preference Service**

**DMA House**

**70 Margaret Street**

**London W1W 8SS**



## Reuse

A lot of waste that is produced could be reused. Examples of how you could reuse the waste you produce include:

- Donating unwanted clothes, shoes and household goods to charity shops and good causes.
- Passing old clothes on to younger brothers or sisters.
- Passing on books and magazines to your local doctors, dentist or hospital.
- Using jam jars to store nails, screws etc.
- Reusing carrier bags at the supermarket.

When you have something you no longer need, be it a sofa, a video recorder or an old bath – why not put it on **Freecycle**, See [www.freecycle.org](http://www.freecycle.org)

Freecycle allows you to give your unwanted items to someone else who may be able to use them – for **FREE**. You can also receive things through Freecycle.

# Recycling and you

## At Home

The Council provides free recycling collections in all areas of the district. There are a range of kerbside collections available in most areas. These are paper, glass/cans and garden waste. If you need to order a new or replacement bin see [www.bradford.gov.uk/recycling](http://www.bradford.gov.uk/recycling)

## Composting

Composting is a safe and effective way of recycling your fruit, vegetables and garden waste, and makes an excellent soil fertiliser. It's easy to do and costs very little time or effort. Bradford council can offer residents low cost compost bins. Order yours now, see [www.recyclenow.com/compost](http://www.recyclenow.com/compost) or telephone 0845 0770757

## Local Recycling Banks

There are over 70 local recycling banks in the Bradford district. These are situated in easy to reach locations such as supermarkets, community centres, and car parks. The types of materials collected are different at each location but most take paper, glass and cans. For a full list of local recycling banks see [www.bradford.gov.uk/recycling](http://www.bradford.gov.uk/recycling)



## Aire Valley Recycling

Aire Valley Recycling (AVR) is working with the Council to collect recyclables in Saltaire, Haworth, Oakworth, Thornton, Oxenhope and hard to access areas.

Residents are provided with a green box to recycle the following materials: newspapers, magazines, catalogues, junk mail, plastic bottles, glass bottles and jars, drinks cans, cartons, food and pet food cans, paired shoes, clothes and envelopes.

For information on recycling boxes in Aire Valley Recycling areas please contact: Aire Valley Recycling  
Tel: 01535 618207

[www.airevalleyrecycling.co.uk](http://www.airevalleyrecycling.co.uk)



## What are Household Waste Recycling Centres?

Household Waste Recycling Centres is the new name for 'tips' or 'dumps' - somewhere the public can take household waste to dispose of it. These sites have been developed and improved to help residents recycle a much wider range of waste items.

Each HWRC allows you to segregate recyclable material quickly and easily. Residents are able to separate materials into various types of containers for recycling and also dispose of bulky or excess waste.



## Where is my local HWRC?

There are 8 HWRCs in the Bradford district  
These are:

- **Bowling Back Lane, Bradford**
- **Dealburn Road, Wyke**
- **Dowley Gap, Wagon Lane, Bingley**
- **Fordhill, Queensbury**
- **Golden Butts Road, Ilkley**
- **Midland Road, Manningham**
- **Royd Ings Avenue, Keighley**
- **Sugden End, Keighley**



The sites are open to members of the public 7 days per week, 362 days per year. The Household Waste Recycling Centres are open at the following times:

Sites	Weekdays	Saturdays	Sundays
<b>Bowling Back Lane, Bradford</b>	8am-5pm	8am-4pm	9am-4pm
<b>Dealburn Road, Low Moor, Wyke</b>	8am-5pm*	8am-4pm	9am-4pm
<b>Dowley Gap, Wagon Lane, Bingley</b>	8am-5pm	8am-4pm	9am-4pm
<b>Ford Hill, Queensbury</b>	8am-5pm	8am-4pm	9am-4pm
<b>Golden Butts Road, Ilkley</b>	8am-5pm	8am-4pm	9am-4pm
<b>Midland Road, Manningham</b>	8am-5pm	8am-4pm	9am-4pm
<b>Royd Ings Avenue, Keighley</b>	8am-5pm	8am-12 noon	9am-4pm
<b>Sugden End, Halifax Road, Keighley</b>	8am-5pm*	8am-4pm	9am-4pm



All sites are closed on Christmas Day, Boxing Day and New Years Day. But, are usually open on other Bank Holidays and Sundays.

*\* These sites close at 4pm weekdays in winter (GMT hours)*

There are also over 70 local recycling banks across the district. To find out the one nearest to your home please call **01274 431000** or visit [www.bradford.gov.uk/recycling](http://www.bradford.gov.uk/recycling)

## Is there a charge to use the local HWRC?

There is no charge to use the HWRCs to dispose of household waste in the Bradford district.

However, residents who use a commercial type vehicle such as a van, pick-up, flatback or large trailer (over 1.5m) to take their own bulky domestic or recyclable waste to one of the HWRCs, now require a **FREE** permit.

The permit system is designed to prevent commercial waste being disposed of at these centres and to ensure businesses meet the proper costs of disposing of their waste.

For more information on the van permit system please visit [www.bradford.gov.uk/wastepermits](http://www.bradford.gov.uk/wastepermits) or call **01274 432442 / 01535 681482**

Traders can dispose of trade waste on payment of the appropriate fee at Bowling Back Lane, Bradford or at Royd Ings Avenue, Keighley.

The Council provide a trade waste collection on request. Please phone **01274 434285** for more information.



## Contact us

For further information on recycling please contact:

**01274 431000**

Streetscene: 01274 431000

Website: [www.bradford.gov.uk/wastemanagement](http://www.bradford.gov.uk/wastemanagement)

Children's waste recycling website: [www.waste-invaders.co.uk](http://www.waste-invaders.co.uk)

# Introduction to the A-Z

The following A-Z section contains details of recycling and associated services offered by Bradford Metropolitan District Council. Use this guide to find out what materials can be recycled within the Bradford district.



## Aerosols

Aluminium and steel aerosols can be recycled in your kerbside recycle bin or insert. Or you can take them to your local HWRC or local recycling bank.

Remember – aerosols need to be completely empty before being disposed of. **DO NOT** puncture or crush aerosol cans.

## Aluminium cans

Aluminium cans can be recycled at your local HWRC, local recycling bank, or using the kerbside recycling bin insert scheme.

Making a new aluminium can from an old one uses 95% less energy than manufacturing it from raw materials.

Please wash and squash your cans where possible.



## Aluminium foil

CLEAN kitchen and metal foil items can be recycled at your local HWRC or local recycling bank, or in your glass/can insert.

## Asbestos

This is a hazardous material and must be treated with special care as it can cause health problems.



Small amounts can be disposed of at the HWRC at Bowling Back Lane, Bradford. You must telephone the site beforehand. Only pre-booked asbestos loads will be accepted.

**ASBESTOS NOT WRAPPED OR SEALED PROPERLY WILL BE REFUSED AT THE SITE.**

This facility is not available for commercial operators.

For advice on asbestos see [www.bradford.gov.uk/asbestos](http://www.bradford.gov.uk/asbestos)



## Batteries - household

All domestic batteries can be recycled at your local HWRC. Or you can use the battery recycle banks at some of the Council's public buildings and libraries.

## Bedding/Blankets

Any unwanted bedding can be donated to your local charity shop or voluntary organisation.

## Beds

Beds for reuse can be collected by furniture projects 'see furniture'. If the bed cannot be reused please call bulky waste collection service on **01274 431000** or take to your local HWRC.

## Bikes

You can give your unwanted bikes to friends or relatives to be reused or you can advertise it on [www.freecycle.org](http://www.freecycle.org).

There is a repair and restore service for bikes at our Bowling Back Lane and Royd Ings, Keighley HWRC.

Alternatively they can be placed in the HWRC's scrap metal area.



## Books

Books in a good condition can be taken to charity shops for other people to use. They can also be passed on via [www.freecycle.org](http://www.freecycle.org)

There are also book banks at selected HWRC's.

## Bottles

Please see '*Glass bottles and jars*' or '*Plastic bottles*' depending on the material of your bottle.



## Bric a Brac

These items are usually accepted at most charity shops.

## Bricks

Any household bricks (not trade waste) can be taken to a HWRC and deposited in the skip signed "bricks and rubble".

## Bulky refuse

Bradford Council offers bulky refuse collection for all households in the district. Items such as furniture, beds, washers, cookers, carpets and bikes will be collected free of charge.

Each household is allowed 4 collections per year and can include a maximum of 5 items. A charge will be made for larger collections.

For more information on a bulk refuse collection call **01274 431000**.



## Cans

All metal cans can be recycled at your local HWRC or local recycling bank. Cans are also recycled using the kerbside recycling bin insert scheme.

## Car batteries

These can be taken to any of the HWRCs in the district.



## Cardboard

White and grey cardboard can be placed in your paper recycling bin but brown corrugated cardboard can only be recycled using the cardboard skips at HWRCs.

You can reuse cardboard boxes for storage. Also small amounts of cardboard can be used to make compost in your home composter.

## Cards

These can be reused to make gift tags. They can also be recycled in your kerbside paper bin or at your local HWRC or in one of the many local recycling banks. However, please ensure those with foil or glitter are not placed in the receptacles as this contaminates the rest of the material.

Some large stores collect Christmas cards on behalf of the Woodlands Trust charity.

## Carpets

Good quality carpets and rugs can be reused by selling on or donating to charity or voluntary groups.

As a last resort carpet can be deposited in your local HWRC in the general waste skip. However this will then be sent to landfill

## Carrier bags

They should be reused at every opportunity for future shopping trips.

Carrier bags can also be reused as bin liners.

They can also be returned to some supermarkets for recycling.



## Cartons

Juice and drinks cartons can now be recycled at all HWRCs.

## Compact Discs (CDs)

These are not yet recyclable, however they can be reused either through friends, relatives, car boot sales or through charity shops.

We do provide a music CD bank at Midland Road HWRC where we will collect CDs and donate them to charity.

## Christmas trees

Trees can be taken back to the garden centre you bought it from and recycled. Alternatively they can be recycled at any of the district's HWRCs.

## Clothing

Clothing that is in good condition can be deposited it at your local HWRC or local recycling bank. Or you could donate clothes to your local charity shop.

## Coat Hangers

Many charity shops can use coat hangers to display clothes, or pass on to family or friends to reuse.

## Composting

Wherever possible home compost everything you can. Your garden waste can be composted using the kerbside garden collection service (the garden waste service is only available in selected areas).

Bradford Council in partnership with WRAP offer people low cost compost bins. To take advantage of this offer, please call the hotline on **0845 077 0757** or log on to **[www.recyclenow.com/compost](http://www.recyclenow.com/compost)** Other wise please take all green garden waste to your HWRC compost skip.

## Computers

Old computers, monitors and printers (usable) can be donated to Sava-Comp. Please tel: **01535 662089** or Email: **[info@sava-comp.org.uk](mailto:info@sava-comp.org.uk)**

Computers that are beyond repair should be disposed of at your local HWRC.

## Cookers

Cookers can be recycled at HWRC or by using the bulky waste collection service, or through **[www.freecycle.org](http://www.freecycle.org)**



## Cooking oil

Small quantities of cooking oil can be taken to your local HWRC.

## Commercial waste

Traders can dispose of commercial waste at Bowling Back Lane or Keighley HWRCs on payment of the appropriate fee.

The Council provide a trade waste service on request. Contact **01274 434285** for further information.



## Domestic Waste

Most domestic waste can be recycled. Recycling is even easier using your kerbside recycle collection service. You can also use one of the Councils 8 HWRCs or one of over 70 local recycling banks in the District.



## Egg boxes

Buy eggs in a cardboard box, which can be composted using a home composter. Make sure you tear them up before adding them to your composter. Plastic egg boxes cannot yet be recycled.

## Electrical goods

When you purchase new electrical appliances the retailer will take away your old one as of July 2007. Alternatively they can be taken to your local HWRC.

## Engines

Old engines can be taken to a scrap merchants. They must be drained of any oil first.



## Fluorescent tubes

These tubes can be recycled at one of the HWRC's in the district.

## Fridges and freezers

See '*Electrical goods*'.



## Drinks cans

See '*Cans*'.

## Domestic appliances

Unwanted appliances can be taken to the HWRC's. Alternatively, they can be taken to a scrap metal dealer in the district.

## Engine oil

Engine oil can be taken to your local HWRC.

DO NOT dispose of oil down the drain, this is illegal and can cause environmental damage.

## Envelopes

Both white and coloured envelopes can be recycled in your kerbside paper recycling bin. You no longer have to remove the plastic windows or glue. We cannot recycle brown envelopes.

## Furniture

Any furniture that is in a reusable state can be given to community organisations such as CHAS (01274 731909), Windhill Community Furniture Store (01274 593196), Keighley furniture Project (01535 601999), Newlands Furniture Service (01274 774977).

Furniture that cannot be reused should be disposed of at the local HWRC or using the bulky waste service see '*bulky waste*'.



## Garden waste

Your garden waste can be composted using your kerbside garden collection service (the garden waste service is only available in selected areas).

It can also be composted by taking it to a HWRC.

## Gas cylinders

Gas cylinders can be used again if you return them to the retailer or supplier after use.



## Hazardous waste

Hazardous waste should be dealt with very carefully. To dispose of it please call Bradford Council on **01274 431000**. This can include cleaning detergents, pesticides, garden chemicals, white spirit/solvents and creosote.



## Ink cartridges

These can be sent back to the suppliers of the ink cartridge. There are also many charities that will accept cartridges. Small cartridges can be recycled at HWRCs in the district.

## Glass bottles and jars

The majority of people in the Bradford district have a kerbside recycling collection of glass bottles and jars using the recycling insert.

You can also recycle glass bottles and jars at your local HWRC or local recycling bank.

## Greetings cards

See 'Cards'.

## Hearing aids

Hearing aids cannot be recycled, however hearing aids are collected at a number of places such as doctor's surgeries, hospitals and some charity shops. These will then be repaired and sent overseas to reuse in developing countries.





## Jars

Please see 'Glass bottles and jars'.

## Jewellery

Jewellery that you no longer want can be taken to a local charity shop, or advertised on [www.freecycle.org](http://www.freecycle.org)

J

## Junk mail

Junk mail can be recycled using your kerbside recycling bin. Please remove all plastic packaging before recycling the mail.

You can reduce junk mail by registering with the Mail Preference Service (Please see page 3 for details).



## Kitchen waste

Most uncooked kitchen waste such as vegetable peelings, fruit waste and crushed egg shells can be composted using a home compost bin. However items such as cooked vegetables, meat and dairy products must not be composted and should be placed in your household waste bin.



## Light bulbs

Lightbulbs can be recycled at your local HWRC.

Energy saving light bulbs last up to 12 times longer than a standard bulb and use a lot less energy, saving you money on your energy bills.





## Magazines

All magazines should be recycled in your kerbside recycling bin. You can also recycle them at your local HWRC or local recycling bank.

## Medicine bottles

Any medicines or empty bottles should be returned to a pharmacy for safe disposal.

## Metal

All scrap metal should be recycled and not sent to landfill. You can take scrap metal to any scrap merchants in the district or to your local HWRC. Metal cans can be recycled using the kerbside recycling service or at your local HWRC or local recycling bank.

## Nappies

You should use real nappies for your children, which are environmentally friendly. For further information please call the Real Nappy Project on **01274 718420** or visit [www.bradford.gov.uk/realnappy](http://www.bradford.gov.uk/realnappy). Unfortunately disposable nappies are not yet recyclable.

## Oil

Oil can be taken to your local HWRC.

**DO NOT** dispose of oil down the drain, this is illegal and can cause environmental damage.



## Milk bottles

Both plastic milk bottles and those made by TetraPak can be recycled at your local HWRC. Glass milk bottles can also be returned to your milkman.

## Mobile phones

Old mobile phones can be given to your local charity, who will recycle or reuse them.

## Newspapers

Newspapers should be recycled using your kerbside recycling bin. You can also recycle them at your local HWRC or your local recycling bank.





## Packaging

You should try to buy goods that have little or no packaging i.e. loose fruit and veg, as most packaging is hard to recycle. However most cereal, thin type boxes and sleeves can be recycled in your paper bin.

## Paint

Used paint should be disposed of at your local HWRC. Also paint can be given to Community RePaint to be reused, contact **01274 737267**



## Paper

Paper can be recycled using the kerbside paper recycling service. Residents who do not have a kerbside service and would like to recycle at home should call **01274 431000** to arrange a bin delivery.

Paper can also be taken to your local HWRC or local recycling bank.

## Plastic bags

Plastic bags are made from a type of plastic that is difficult to recycle. Reusable bags should be used instead of using a new one each time you go shopping. Plastic bags can be recycled at most supermarkets in the district, or used as bin liners.

## Plastic bottles

Only plastic bottles can be recycled at your local HWRC or local recycling bank. No other plastic containers, eg yoghurt pots or margarine tubs can be recycled.



## Quilts

Any good quality clean quilts that you no longer want should be taken to your local charity shop to be reused.



## Recycling

Recycling is easy. The Council provide a free doorstep recycle collection service to make recycling even easier. We also provide 8 HWRC's and over 70 local recycling banks throughout the District.



## Shoes

Shoes can be recycled at your local recycling centre. They **MUST** be paired and bagged (separately from textiles) then placed in the textile/shoe banks.



## Telephone directories

These can be recycled in your kerbside recycling bin, or taken to your local HWRC or local recycling bank.

## Televisions

See '*Electrical goods*'.

## Textiles

All clean, dry textiles can be recycled using your nearest recycling centre's textile bank. Alternatively, they can be given to charities to reuse.

## Toys and games

Toys and games suitable for resale can be taken to some of the charity shops in your area. Also they can be passed on to friends with children of a suitable age.

## Spectacles

These can be recycled at most opticians.

## Steel Cans

Cans are recycled using the kerbside recycling insert service. They can also be recycled at your local HWRC or local recycling bank.



## Tetrapak

Juice and drinks cartons and containers can now be recycled at any of the HWRCs.

## Tyres

It is illegal to dispose of tyres at HWRCs. Tyres should be returned to the garage where the tyre was fitted. It is the garages responsibility to dispose of the tyres in a safe way.





## Vegetable peelings

Vegetable peelings can be used in your home composting bin. They quickly rot and provide important nitrogen and moisture for the composting process.

## Vehicles

If you see an abandoned vehicle please call Bradford council on **01274 431000**. If you have an old vehicle you want to get rid of it should be taken to a scrap metal merchants.



## Washing machines

See *'Electrical goods'*.

## White goods

See *'Electrical goods'*.

## Window glass

Window pane glass, mirrors and glass objects cannot currently be recycled. Please dispose of them appropriately at your local HWRC.



## Yellow Pages

These can be recycled in your kerbside recycling bin, or taken to your local HWRC or local recycling bank.



## Zero waste

What we are aiming for!

## Videos

Video tapes can be reused, if in good condition charity shops and local community groups may accept them.



## Wood

All shapes and sizes of wood and board objects eg, broken furniture should be recycled at any of the district's HWRCs.



## Yoghurt pots

Yoghurt pots are made from a type of plastic that is difficult to recycle. Currently, we are unable to recycle these in the district. Please dispose of these using your household waste bin. Alternatively they can be reused as paint pots or to plant seedlings in.

## Zips

Zips can be reused or taken to charity shops to be reused.

**Newly refurbished - opening Nov 2008!**

## Ford Hill, Queensbury Household Waste Recycling Centre



We are pleased to re-open Ford Hill, Queensbury, Household Waste Recycling Centre after a 4 month refurbishment programme.

The new improved and bigger site will offer you a wider range of recycling facilities so you can recycle even more!

There will also be containers available for general waste items that cannot be recycled.

### **You can recycle even more at Ford Hill - we accept:**

- Batteries
- Cardboard
- Drinks cartons
- Electrical goods
- Fluorescent tubes
- Glass, cans, aerosols
- Green garden waste
- Hardcore & rubble
- Paint
- Paper
- Plastic bottles
- Scrap metal
- Shoes & textiles
- Soil
- Waste oil
- White goods
- Wood & timber

### **New, longer opening times:**

Mon – Fri	8am – 5pm
Sat	8am – 4pm
Sun	9am – 4pm

# Recycle at home

Recycling at home is very easy and can involve all of your family.

The Council provides a wheelie bin for recycling paper with an insert caddy to recycle glass and cans. The caddy is placed within the recycling bin to reduce the amount of space you need at home.



 recycle for your community

**Do you have a recycling bin with an insert?**

If not, please call 01274 431000 and one will be delivered to you along with details of the collection dates.

**This leaflet is available in LARGE PRINT, Braille, tape and other languages. Please contact 01274 437112 for more details.**

