

Local Development Framework for Bradford

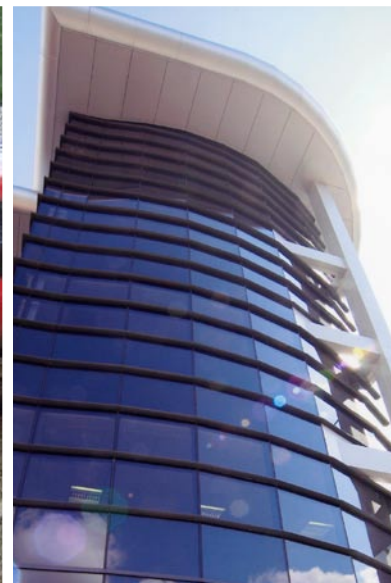
Core Strategy

Further Issues and Options Consultation

Consultation Event Log

Stakeholder Events: BME COMMUNITIES

July 2008



This document is one of a number that make up the Local Development Framework for the Bradford District. If you need the contents of this document to be interpreted or translated into one of the community languages or you require it in Braille, Large Print or on tape, please contact the Local Development Framework Group on (01274) 434050, (01274) 434544 or (01274) 434606

यह दस्तावेज़ उन बहुत से दस्तावेज़ों में से एक है जिनसे मिलकर ब्रैडफोर्ड डिस्ट्रिक्ट का लोकल डिवेलपमेंट फ्रेमवर्क बनता है। यदि आप इस दस्तावेज़ की जानकारी का हिन्दी अनुवाद या इसे ब्रेल, बड़े अक्षरों या टेप पर प्राप्त करना चाहते हैं, तो कृपया लोकल डिवेलपमेंट फ्रेमवर्क ग्रुप से (01274) 434050, (01274) 434544 या (01274) 434606 पर सम्पर्क करें।

ਇਹ ਦਸਤਾਵੇਜ਼ ਅਜਿਹੇ ਬਹੁਤ ਸਾਰੇ ਦਸਤਾਵੇਜ਼ਾਂ ਵਿਚੋਂ ਇਕ ਹੈ ਜਿਨ੍ਹਾਂ ਨਾਲ ਬਰੈਡਫੋਰਡ ਡਿਸਟ੍ਰਿਕਟ ਦਾ ਲੋਕਲ ਡਿਵੈਲਪਮੈਂਟ ਫਰੇਮਵਰਕ ਬਣਦਾ ਹੈ। ਜੇਕਰ ਤੁਸੀਂ ਇਸ ਦਸਤਾਵੇਜ਼ ਵਿਚ ਦਿੱਤੀ ਗਈ ਜਾਣਕਾਰੀ ਦਾ ਪੰਜਾਬੀ ਅਨੁਵਾਦ ਜਾਂ ਇਸਨੂੰ ਬ੍ਰੇਲ, ਵੱਡੇ ਅੱਖਰਾਂ ਜਾਂ ਟੇਪ 'ਤੇ ਪ੍ਰਾਪਤ ਕਰਨਾ ਚਾਹੁੰਦੇ ਹੋ ਤਾਂ, ਕ੍ਰਿਪਾ ਕਰਕੇ ਲੋਕਲ ਡਿਵੈਲਪਮੈਂਟ ਫਰੇਮਵਰਕ ਗਰੁੱਪ ਨਾਲ (01274) 434050, (01274) 434544 ਜਾਂ (01274) 434606 'ਤੇ ਸੰਪਰਕ ਕਰੋ।

ब्राडफोर्ड डिस्ट्रिक्ट (Bradford District) এর লোক্যাল ডেভেলপমেন্ট ফ্রেইমওয়ার্ক (Local Development Framework – স্থানীয় উন্নয়ন কাঠামো) এর অনেকগুলো কাগজপত্র বা দলিলপত্রের একটি হলো এই তথ্যপত্রটি। এই তথ্যপত্রের বিষয়বস্তু কমিউনিটির লোকদের কোনো ভাষায় বুঝতে চাইলে অথবা লিখিত অনুবাদ চাইলে নতুবা তা ব্রইলে (অক্ষলিপিতে), মোটা হরফে কিংবা ক্যাসেটে রেকর্ড করে চাইলে, অনুগ্রহ করে লোক্যাল ডেভেলপমেন্ট ফ্রেইমওয়ার্ক গ্রুপ (Local Development Framework Group)-কে (01274) 434050, (01274) 434544 বা (01274) 434606 নাম্বারে ফোন করুন।

ਆ ਦਸਤਾਵੇਜ਼ ਬਹੁਮਾਂ ਨੂੰ ਐਕ ਓ ਕੇ ਜੇ ਐਡਰੈੱਸ ਡਿਸਟ੍ਰਿਕਟ ਨਾਂ ਸਥਾਨਿਕ ਵਿਕਾਸ ਨੀ ਰੂਪਰੇਖਾ ਅਨਾਵੇ ਓ. ਜੋ ਤਮਨੇ ਆ ਦਸਤਾਵੇਜ਼ਾਂ ਵਧਾਉਣ ਨੂੰ ਪ੍ਰਾਏਸ਼ਿਕ ਆਖਅੋਮਾਂ ਆਖੰਤਰ ਕਰਾਵਾਨੀ ਅਥਵਾ ਤੇਨੋ ਅਰਥ ਸਮਝਵਾਨੀ ਜੜ੍ਹਰ ਜਠਾਯ, ਅਥਵਾ ਤਮਨੇ ਤੇਨੀ ਜੜ੍ਹਰ ਐਠਲ, ਆਰਜ਼ ਮਿ-ਟ ਕੇ ਪਠੀ ਟੇਪ ਓਪਰ ਡੋਯ, ਜੋ ਮਠੇਰਆਨੀ ਕਰੀ ਲੋਕਲ ਡਿਵੇਲਪਮੇ-ਟ ਫ਼ੇਮਵਰਕ ਗ੍ਰੁਪਨੋ (01274) 434050, (01274) 434544 ਅਥਵਾ (01274) 434606 ਪਰ ਸੰਪਰਕ ਕਰੋ.

یہ دستاویز بریڈفورڈ ڈسٹریکٹ کے مقامی ترقیاتی لائحہ عمل سے متعلقہ دستاویزات میں سے ایک ہے۔ اگر آپ کو اس دستاویز کا زبانی یا تحریری ترجمہ کسی بھی کمیونٹی زبان میں درکار ہو یا آپ اسے بریل، لارج پرنٹ یا ٹیپ میں چاہتے ہیں تو براہ مہربانی لوکل ڈیولپمنٹ فریم ورک گروپ سے ٹیلی فون نمبر: 01274 434050، 01274 434544 یا 01274 434606 پر رابطہ کریں۔

CONTENTS	PAGE
1.0 EVENT OVERVIEW	1
2.0 EVENT FLYERS	4
3.0 BANGLADESHI YOUTH ORGANISATION	7
4.0 GRANGE INTERLINK	13
5.0 KEIGHLEY ASIAN WOMEN'S CENTRE	18
6.0 MARY SEACOLE CENTRE	21

1.0 EVENT OVERVIEW

BACKGROUND

- 1.1 The Core Strategy is the document that will show broad areas for growth and restraint, and will set out the role that different areas of the District will have in 2026. There are three stages in the production of the Core Strategy, the first being the pre-production stage that is termed 'issues and options' stage; the next is the preferred option stage and lastly examination stage prior to adoption of the document.
- 1.2 In line with the requirements of the new Planning system, Bradford Council conducted a public consultation on the issues and options for the Bradford district in January 2007. Following the publication of revised housing figures in the Regional Spatial Strategy (the regional development plan published by the Yorkshire and Humber Assembly) in October 2007, the Council sought to provide further consultation on the issues and options for the broad locations of new housing development – this is named Further Issues and Options consultation stage.
- 1.3 The Statement of Community Involvement (SCI) places importance in ensuring effective and representative engagement. It recognises that many communities are often hard to reach and need a tailored approach to ensure they are consulted in a meaning full way and care is taken to remove any potential barriers to their engagement.
- 1.4 One of the hard to reach groups identified was ethnic minority or BME groups within the District. This encompasses both traditional BME groups within the District but more recent ethnic groups including those from Eastern Europe. To ensure representative the Council is working partnership with Yorkshire Planning Aid to engage the range of BME communities in Bradford District.
- 1.5 A series of workshop events were run which targeted the existing BME networks. The two events were:
- Bangladeshi Youth Organisation - 11th April; and was attended by 12 people;
 - Grange Interlink - 16th April; and was attended by 24 people;
 - Keighley Asian Women's Centre – 28th April, and was attended by 25 people;
 - Mary Seacole Centre – 27th May, and was attended by 27 people;

FURTHER ISSUES AND OPTIONS CONSULTATION

- 1.6 The Further Issues and Options consultation process, which ran from February 2008 to May 2008 included different methods of public consultation and aimed to reach the different groups within the community, with help from Yorkshire Planning Aid.
- 1.7 The purpose of the Further Issues and Options Consultation was to respond to the increase in the housing requirements and to seek the issues and possible options to accommodate the increase in housing. The revised housing figures for Bradford meant that the Council is required to supply enough land for 50,000 homes, an annual rate of 2700, an increase of 1140 houses per year.
- 1.8 The Council put forward four options for the location of development, with each option seeing different areas of the District with different a proportion of the 50,000 houses.
- 1.9 The consultation sought views from the public, landowners, community groups, infrastructure providers and other interested parties, and to identify which option was viewed more favourably, or whether there was a fifth option that emerged from comments received.

OBJECTIVES

- 1.10 The events had two broad objectives:
- Raise awareness of the Core Strategy Issues and options for Bradford.
 - Engage with BME networks in exploring the key issues and possible options for addressing them in the Core Strategy
- This report sets out the detailed record for each event, including the background material, delegates and notes of the discussions.

PARTICIPANTS

- 1.12 Yorkshire Planning Aid advertised events via flyers targeting local organisations and groups with an interest in the area. The flyers produced, which were placed in the consultation locations can be found below.
- 1.13 A total of 88 delegates plus Yorkshire Planning Aid organisers and facilitators attended the events in Bradford.

PROGRAMME

- 1.14 The events took the form of group discussions; beginning with scene setting DVD presentation and a brief introduction to the plan followed by discussion groups. The

groups looked at the positive and negative aspects of the areas where participants lived, then moving onto discussing two key topic areas of housing and community facilities.

DOCUMENTATION

- 1.15 Copies of the Further Issues and Options Reports were available, these were:
1. Spatial Vision and Strategy
 2. Initial Sustainability Appraisal
 3. Draft Settlement Study
 4. Summary leaflet - Your District in 2026

DISCUSSION GROUPS

- 1.16 The discussion groups were designed to allow people to express their opinions on the future of the District, more specifically the main issues facing the area. Each had a dedicated facilitator from Yorkshire Planning Aid who also acted as a scribe to record the discussions.
- 1.17 The notes of the discussions at each event are summarised in Sections 3.0 to 6.0.

2.0 EVENT FLYERS



Bradford in 2026 50,000 NEW HOUSES

Where will they go?

What development will they bring? New sports centres, new shops, new jobs? Will the transport systems cope?

What do you need where **YOU** live? More family housing, a place of worship, a health centre, more parks? This is **YOUR** opportunity to help shape the future of the Bradford district and Manningham.

11th April 2008

17:30-18:30

Bangladeshi Youth
Organisation
52 Cornwall Road
Manningham

Bradford planners want to know what you think:

- Where should the new housing go? In the inner city areas or in the outlying areas?
- Should the Green Belt continue to be protected?
- What type of housing is needed?

Come along to our
Community Involvement
Event

THIS PLAN WILL AFFECT YOU
- MAKE SURE YOU HAVE
TAKEN YOUR OPPORTUNITY
TO HAVE YOUR SAY BEFORE
IT IS TOO LATE.





Bradford in 2026 50,000 NEW HOUSES

Where will they go?

What development will they bring? New sports centres, new shops, new jobs? Will the transport systems cope?

This is **YOUR** opportunity to help shape the future of the Bradford district and your area.

Bradford planners want to know what **YOU** think.

16th April 2008

11am-3pm

Grange Interlink
Summerville Road
Bradford
BD7 1PX

Buffet provided

Come along to our
Community Involvement
Event

THIS PLAN WILL AFFECT YOU
- MAKE SURE YOU HAVE
TAKEN YOUR OPPORTUNITY
TO HAVE YOUR SAY BEFORE
IT IS TOO LATE.

City of Bradford Metropolitan District Council

www.bradford.gov.uk



Bradford in 2026 50,000 NEW HOUSES

Where will they go?

What development will they bring? New sports centres, new shops, new jobs? Will the transport systems cope?

What do you need where **YOU** live? More family housing, a place of worship, a health centre, more parks? This is **YOUR** opportunity to help shape the future of the Bradford district and your area.

Monday
28th April
1pm-3pm

Keighley Asian Women and
Children's Centre
Eastwood Centre,
Marlborough Street
Keighley BD21 3HU

Bradford planners want to know what you think:

- Where should the new housing go? In the inner city areas or in the outlying areas?
- Should the Green Belt continue to be protected?
- What type of housing is needed?

Come along to our
Community Involvement
Event

THIS PLAN WILL AFFECT YOU
- MAKE SURE YOU HAVE
TAKEN YOUR OPPORTUNITY
TO HAVE YOUR SAY BEFORE
IT IS TOO LATE.



City of Bradford Metropolitan District Council

www.bradford.gov.uk

3.0 BANGLADESHI YOUTH ORGANISATION

Friday 11th April 2008 - 17:30-18:30

A series of questions were put around the room on flipcharts for the girls to write their responses on. These are as follows:

What do you like about Manningham?

- The people / community
- Multicultural
- Park areas (Manningham Park & Lister Park)
- Shops / market
- Town centre
- Takeaway stores
- Cars
- Nothing

What do you dislike about Manningham?

- Cleanliness – too much rubbish and its quite a dirty area - More attentive council attention needed
- Nowhere for kids to feel safe.
- Centres
- Car park spaces.
- The scenery is boring!
- Schools along one-way streets.
- A lot of things.
- Nothing.

What changes would you like to see in Bradford / Manningham?

- More time-consuming places i.e. shopping malls and parks
- More activities for youths, to prevent them from getting into trouble i.e Youth Clubs.
- More available car parking spaces.
- Having less transport
- Cleaner areas

How would you describe Bradford's image?

- Good area to live in.
- Lots of nice people.
- Multicultural.
- Going places.
- Not many exciting places.
- Not very respectable.
- Unclean.
- Boring.
- Gangster hangout!

Where should the 50,000 new homes go? Please vote by ticking your preference.

The table below displays the number of ticks received for each option

Green areas in built up area	1
Green belt	0
Brownfield land (been previously developed e.g. old factory site)	15
In the main Bradford urban area	6
In smaller places e.g. Ilkley, Keighley, Queensbury	1

What types of housing are needed in Bradford? eg. flats, family housing, affordable...

- Affordable (family) housing
- Family housing
- Good quality
- Big, big houses
- Detached houses with big gardens and 3 car parking spaces
- Houses not to be built in one way streets
- Houses not to be built along main/busy roads
- Houses with higher ceilings

The group was then split into 2 discussion groups. The first discussed the prospect of new housing in Bradford, where it should go and what benefits / problems it may bring. The second discussed what community facilities were needed in Manningham.

Housing (group 1)

Do you want to stay in the area?

No, some would prefer to move out of the district

Location of housing - City centre or in rural areas?

- City centre due to easy access and has lots to offer young families.
- City centre does not really have many leisure facilities, it is ok for the people who are here now but if more people come because of new housing more employment, transport and facilities will be needed.
- More housing in the city centre would deprive Bradford of leisure facilities.
- Not a lot of room in the city centre for more houses.
- It depends where the houses go, Salts Mill and green spaces are important.
- Concerns about loss of green spaces where people / children use to play.
- Bradford is too small for all these new houses.

Types of Housing

How do you feel about flats?

- The ones we have so far are small, poor quality with broken windows etc. If more flats are developed they need to be good quality and affordable.
- There are already lots of flats.
- Size / type of houses needed
- If new housing goes in the city centre, it is already too crowded with few park areas / no green spaces. New houses would have to be fairly small but need detached homes because families are growing.
- Need for bigger houses / 4 bedroom houses, at least aim for 3 bedrooms, more than one bathroom, average size garden and a garage.

Spatial Options

It was generally concluded that option 4 would be bad from the group's point of view.

Housing (group 2)

Benefits of more housing:

- Need for housing to accommodate large families
- New housing will be more sustainable – retain heat
- New housing could have larger spaces between them.

Negatives of more housing:

- More people in the community – trust issue
- Cramping
- More kids/adults to fight
- Loss of Greenfield/Green Belt and land to farm – should build on Brownfield

Manningham:

- Needs cleaning – provision of bins
- If the area was improved would like to stay
- More people may encourage more activities

Types of housing:

- Flats are more affordable – must be of a high quality 'posh'
- Needs to be a mix of flats and housing – integrated not separate sways
- Up grade old houses

The ideal:

- Big houses and gardens
- Open spaces in new development
- The houses do not matter – the area must be clean/green

Facilities associated with housing:

- If Bradford is to grow improving facilities must be a focus – City town centres
- More youth activities
- More shops – town is boring
- The town should be made more attractive
- More parks

- Access to existing parks should be made safer – CCTV, Pedestrian crossings
- Encourage the existing parks to be used for shows – eg. like Roundhay in Leeds

Community Facilities (group 1)

What problems are there in Manningham?

- Clean streets.
- Road improvements.
- Traffic danger on Queens Rd / MC.
- Lollypop person.
- More activities for girls / young kids.
- Leisure centres.
- Careers advisor.
- Gym for young kids (discount).
- Kickboxing sessions, martial arts.
- Improvements on old houses not just new council houses.
- New swimming pools (fresh water) vittel.
- Make dull areas look attractive.
- Bins, recycling bins and air fresheners (oust).
- Less pollution, less cars.

If you were to move away from Manningham, what would you want to see in your new area?

- Parks.
- Relaxing area.
- Community centres.
- Shops located near houses, grocery, take aways, supermarkets.
- Friendly people.
- No crime.
- Mosque, church, temple.

What can Bradford do to improve its image?

- Tackle racism
- Stereotypical – people make assumptions.
- Too crowded, messy.
- Crime e.g. mugging.
- Houses more spread out = more space.

Community Facilities (group 2)

What is needed in Manningham?

- Youth facilities / centres.
- Cinema.
- Leisure centres & more council gyms/sport centres.
- More designer shops needed.
- Big mall.
- Peel Park / Manningham Park – well used e.g. fairs go there. They should be protected.
- Factories.
- Overgrown areas between houses and factory are used for dumping rubbish.
- Cleaner e.g. houses.
- 50,000 new houses.
- Less houses.
- No more flats.
- Lister Mills converted to flats. Too many people.
- People won't want to live in Bradford any longer if all those houses are built.
- Large family houses – at least 4 bedrooms, for visitors (small and won't be suitable for families)
- Refurbishment of existing houses.
- Refurbishment of empty flats – make them bigger.
- People outgrow their houses – children / parents.
- Activities for teenagers.
- Too many Asian shops.
- History is repeating itself – last time population growth they built too many small houses.

Ethnicity / Age breakdown

Ethnicity	5-15	16-24
Bangladeshi	6	3
Indian	1	
Pakistani		2

4.0: GRANGE INTERLINK

Wednesday 16th April 2008 – 10 until 12 and 1 until 3.

A series of questions were around the room on flipcharts for everyone to write their responses on. These are as follows:

Where you live?

- BD5 x 2
- BD7 x 6
- BD6
- Shipley
- BD7 x 9

The Good	
Housing	<ul style="list-style-type: none"> ▪ Whole street renovation is good
Community Facilities	<ul style="list-style-type: none"> ▪ Everything is close at hand ▪ Good facilities centre ▪ Grange interlink ▪ Schools ▪ University ▪ Sports field
Environment	<ul style="list-style-type: none"> ▪ Bracken Hill park
Other Issues	<ul style="list-style-type: none"> ▪ Good community relations ▪ Neighbourhood watch ▪ Want to stay here ▪ Shops

The Bad	
Housing	<ul style="list-style-type: none"> ▪ Too small houses ▪ Perimeter between houses and park for security
Economy & Jobs	<ul style="list-style-type: none"> ▪ Employment and jobs
Transport	<ul style="list-style-type: none"> ▪ Transport

Local Development Framework for Bradford

	<ul style="list-style-type: none"> ▪ Bus services-timing, lack of bus stops ▪ Parking due to takeaways & double parking
Community Facilities	<ul style="list-style-type: none"> ▪ No shopping centre ▪ Only one supermarket ▪ Need more sports areas ▪ No gym (women) ▪ Lack of public toilets ▪ Not enough schools & schools are full ▪ Demands on GP services ▪ Tesco express ▪ BD7-need play area
Environment	<ul style="list-style-type: none"> ▪ Not enough open space ▪ Living conditions no good ▪ Neglected area for long time
Other Issues	<ul style="list-style-type: none"> ▪ Security, crime/burglary & drugs ▪ Dog fouling ▪ Speeding cars (anti-social behaviour) ▪ Students ▪ BD6-mosque, grass overgrown ▪ Rodent issues due to food being put out ▪ Kids playing football near garages

What type of housing does your area need?

E.g. family housing, flats affordable

- Starter homes
- Lifetime houses
- Houses for older people
- Affordable rented property
- Quality flats/apartments
- More bungalows
- Homes with gardens
- 2 bathrooms up/down
- Storage – extended families, space needed
- Parking, off road, on site

Where should the housing go?

- Open spaces within built up areas
 - xx
- The 'Green Belt'-countryside:
 - Issue of facilities
 - Asian community not want to go away
 - xxxxxx
- Old employment sites:
 - xx
 - Factories, wasteland
- Edge of built up areas:
 - Maybe
 - xx
- Main Bradford area:
 - No space in city centre
 - x
- Smaller places e.g. Queensbury:
 - xx
 - Because little Horton community want to stay together
- Larger places (Ilkley, Keighley, Bingley):
 - x
 - Too far from Bradford
 - As much housing as possible in Bradford

What facilities does your area need?

- Housing – renovate old houses
- More advice services - due to lack of resources
- G.P services - No appointments, too crowded
- Dentists
- Schools - Nurseries, primary, high school
- Play areas
- Indoor sports
- Swimming facilities
- Post offices needed
- Mosques
- Improved transport

Local Development Framework for Bradford

- More policing – sound, anti social behaviour, cars late @ night
- More flowers, trees, attractive environment
- Public toilets – especially people with diabetes
- Super market
- Grow green areas, flowers, grass not just mud
- Better drainage, gutters, rainwater
- Environment cleaning
- Build on open space, leave open spaces for children
- CCTV

Comments:

- Building in city centre is already too dense
- Woodhead Road – old farm could be turned into new housing
- Brackenhill park fence collapsing – advised to take up with Bradford council
- With new housing, would need more community facilities – Mosques nearby, park area
- No council housing – on waiting list for 7 years
- Issues re – drains need to be sorted
- Building on old industrial/factory sites best – leave green spaces
- Layton heights a good place for new buildings
- Happy with building in outlining towns & villages as long as transport facilities are improved

Options Discussion

- Wherever housing is built there must be open spaces and play areas for children & community centres where people can meet
- Development to be spread out so that people aren't living on top of each other, but need facilities
- Concern that housing developments should be available to local people, not all to new residents, especially social housing

Where should housing go?

- Split - some say too many people already in Bradford – others need more development, lots of unused employment land empty, could go for housing; with good transport especially public transport can travel to employment sites
- If employment land concentrated on one side of town means people have to commute = more traffic pollution

Local Development Framework for Bradford

- Not enough spaces here for growing population, in next 20 years people have to move elsewhere. But these shouldn't be as congested, so places should be limited-in smaller towns and villages.
- Keep houses cheap
- Space for small increase but not a lot
- Better if money spent on making older places living better
- When building new houses, don't repeat past mistakes. People getting old and houses not suitable & have to move out, so design life time homes.
- Good public transport is very important

Spatial Option

- 1:- Employment is long way from Ilkley & Keighley could spread out employment land
- 2:- 2 people like this one – more spread out and employment along Aire Valley corridor
- 3:- Lots of travel & congestion as concentrated in Bradford
- 4:- A few like this

Ethnicity/Age Breakdown

Ethnicity	25 - 44	45 - 64	65 - 74
Pakistani	4	17	3

5.0 KEIGHLEY ASIAN WOMEN'S CENTRE

Monday 28th April 2008 - 1pm -3pm.

A series of questions were located around the room on flipcharts for everyone to write their responses on. These are as follows:

What type of Housing do you need?

- Larger housing
- Houses (not small flats)
- Affordable housing
- Young people on the property ladder
- Green space for gardens
- Near amenities e.g. schools, mosques etc
- Older peoples accommodation
- Good transport links
- Housing should have affordable heating lighting etc

Where you live?

- Lawkholme
- Highfield
- Riddlesden

The Good	
Transport	<ul style="list-style-type: none"> ▪ Parking ▪ Good transport system
Community Facilities	<ul style="list-style-type: none"> ▪ Hospital, dentist – close to hand ▪ Schools ▪ Mosques ▪ Shops ▪ Close to the women's centre ▪ Community e.g. people ▪ 2 parks in proximity - Cliffe castle park
Other Issues	<ul style="list-style-type: none"> ▪ Policing (better) ▪ No crime ▪ Very good council services

The Bad	
Housing	<ul style="list-style-type: none"> ▪ Homes are really very old ▪ Need work doing ▪ Need more housing ▪ More social housing
Community Facilities	<ul style="list-style-type: none"> ▪ Not enough facilities for young people ▪ Shops not enough (Riddlesden)
Environment	<ul style="list-style-type: none"> ▪ Not clean - could be cleaner
Other Issues	<ul style="list-style-type: none"> ▪ Problem with mice, rats (derelict houses) ▪ Drugs and antisocial behaviour e.g. snooker club ▪ Nightingale street ▪ Ignores Lawkholme ▪ More crime burglary ▪ Gang culture

What community facilities do you need in your area?

- More education (for adults)
- Secondary schools – not enough space
- After school clubs
- More facilities, programmes for children during school holidays
- Early years facilities 7 -8 upwards
- Youth centre
- More services for young people to distract
- More outreach work (networking)
- Community centre facilities
- Not enough playing space
- More facilities for mother tongue tuition (@ primary school)
- More policing in area

What type of housing do you need?

- Big houses, bigger rooms more bedrooms
- Big semis/detached (not worried about making noise)
- Bungalows for older people

Local Development Framework for Bradford

- Toilets upstairs & downstairs, families & elder people
- Interest free loans for home owners

Where should the new housing go?

- In the countryside
 - Yes some, good for kids if go to mixed area, problem if goes to far
- In the main Bradford/ShIPLEY area
 - Yes some in Keighley
- In the smaller places e.g. Menston, Queensbury
 - In Keighley, if go out to small areas will need facilities
- On old employment sites
 - Yes use disused spaces and places
- On green spaces in built up areas
 - No will become too congested 'wind won't be able to blow'

Discussion

Option one - Too many houses for Keighley (5 or 6) votes for option one

Option two - No votes

Option three- No votes

Option four - Approximately 25 people (unanimous)
- Less houses more employment in Keighley
- Fewer houses, more improvements with existing housing stock in Keighley

Ethnicity/Age Breakdown

Ethnicity	16 - 24	25 - 44	45 - 64
Bangladeshi	5	9	4
Pakistani		6	
White		1	

6.0 MARY SEACOLE CENTRE

Tuesday 27th May 2008

To begin with we asked people the good and bad things about where they lived.

Area	The Good	The Bad
BD5	Nice multicultural area, hospitals, shopping centre, near town, good transport links – road, bus. New communities come in. New medical centre.	Vandalism. High crime. Supermarket isn't close, you have to cross major roads. No playing field for kids. Streets aren't cleaned – litter / leaves. Too many takeaways.
BD2	Morrisons.	Vandalism Not a lot of crime
BD3	Quiet, doctors, supermarket, Post Office all close.	Dirty. Cemetery needs cleaning (some disagreement, one person considers it is clean)
BD4	It was very quiet, now not so. People would move.	Young people on streets. Litter. Neighbours throwing things on gardens. Don't maintain gardens and building stock.
BD7	Not as good as it was in the 1960s.	Very rough these days.
BD8	Lots of people came here when they first arrived in England – multicultural. Safe – can leave door open. People look after each other& each others cars etc. Neighbourhood watch. Shops. Easy to get to services e.g. bank, Post Office. Churches, pubs, entertainment at weekends.	Lots of Asian people who are not always neighbourly. But some are very neighbourly. Density – lots of rubbish. Youngsters congregating on back streets. But some places very clean.
BD6	Quiet, neighbours don't bother you.	

Local Development Framework for Bradford

	Churches, Post Office, supermarket, dentist, doctor – all walkable. Bus stops. Comfortable here. Very nice area.	
BD14	All amenities close by. Not looking to move. Very quiet.	
BD18 (Shipley)	Very nice shopping, schools. Wouldn't move. Lots of space.	

General comments

- Need to convert warehouses into flats in the city centre. This will help stop crime as people will be there.
- Flats for younger people and people on lower incomes.
- Should not split up black people and disperse. Should be allowed to live together.

What facilities are needed in your area?

- City centre needs developing – needs more shops etc.
- BD2 needs more reliable bus service.
- Entertainment – somewhere to play pool, snooker.
- Leisure centres
- Parks - it is hard for elders to enter parks.
- Churches need to come back.
- Community centre.
- Need shops if more people. Shopping centres for everything.
- Restaurants.
- No more takeaways – bring litter. They should have takeaway's name on the boxes and be fined if found littered.

Local Development Framework for Bradford

- Shopping facilities needed. Supermarkets dominate the areas now, this is no good. Supermarkets raise prices. They are taking land that could be used for development.

What type of housing is needed in your area?

- Bungalows are very important.
- Elders – becomes difficult with stairs.
- Some would move from a house to a bungalow.
- Not family housing. Smaller houses needed.
- Flats - for young people
- If flats have lifts, people can stay longer.
- No more housing in urban areas.
- Need more affordable housing.

Discussion on 4 spatial options:

- Sewage issues in Esholt.
- If new housing developed in 'outer' Bradford areas, the affluent people move out leaving 'ghettos' in urban areas. What will the Council do about this?

Spatial Option Votes:

Option 1: 1

Option 2: 0

Option 3: 2

Option 4: 10

Option 4 will need good transport links.

Produced by the
City of Bradford Metropolitan
District Council

Local Development
Framework Group

JULY 2008

