

Local Development Framework for Bradford

# Core Strategy

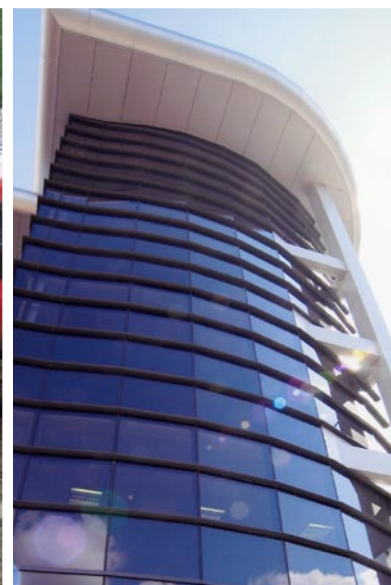
## Further Issues and Options

### Consultation

#### Consultation Event Log

Stakeholder Events: YOUNG PEOPLE

July 2008









<b>CONTENTS</b>	<b>PAGE</b>
<b>1.0 EVENT OVERVIEW</b>	<b>1</b>
<b>2.0 PROGRAMME &amp; FACILITATOR BRIEFING NOTES</b>	<b>4</b>
<b>3.0 SUMMARY OF WORKSHOP NOTES</b>	<b>6</b>



## 1.0 EVENT OVERVIEW

---

### BACKGROUND

- 1.1 The Core Strategy is the document that will show broad areas for growth and restraint, and will set out the role that different areas of the District will have in 2026. There are three stages in the production of the Core Strategy, the first being the pre-production stage that is termed 'issues and options' stage; the next is the preferred option stage and lastly examination stage prior to adoption of the document.
- 1.2 In line with the requirements of the new Planning system, Bradford Council conducted a public consultation on the issues and options for the Bradford district in January 2007. Following the publication of revised housing figures in the Regional Spatial Strategy (the regional development plan published by the Yorkshire and Humber Assembly) in October 2007, the Council sought to provide further consultation on the issues and options for the broad locations of new housing development – this is named Further Issues and Options consultation stage.
- 1.3 The Statement of Community Involvement (SCI) places importance in ensuring effective and representative engagement. It recognises that many communities are often hard to reach and need a tailored approach to ensure they are consulted in a meaning full way and care is taken to remove any potential barriers to their engagement.
- 1.4 One of the hard to reach groups identified is the younger generation within the District. To ensure a representative view of the options is achieved the Council is working partnership with Yorkshire Planning Aid to engage the range of young people across the Bradford District.

### **FURTHER ISSUES AND OPTIONS CONSULTATION**

- 1.6 The Further Issues and Options consultation process, which ran from February 2008 to May 2008 included different methods of public consultation and aimed to reach the different groups within the community, with help from Yorkshire Planning Aid.
- 1.7 The purpose of the Further Issues and Options Consultation was to respond to the increase in the housing requirements and to seek the issues and possible options to accommodate the increase in housing. The revised housing figures for Bradford meant that the Council is required to supply enough land for 50,000 homes, an annual rate of 2700, an increase of 1140 houses per year.
- 1.8 The Council put forward four options for the location of development, with each option seeing different areas of the District with different a proportion of the 50,000 houses.
- 1.9 The consultation sought views from the public, landowners, community groups, infrastructure providers and other interested parties, and to identify which option was viewed more favourably, or whether there was a fifth option that emerged from comments received.

### **OBJECTIVES**

- 1.10 The events had two broad objectives:
- Raise awareness of the Core Strategy Issues and Options for Bradford.
  - Engage with the younger generations within Bradford in exploring their key issues and possible options for addressing them in the Core Strategy
- This report sets out the detailed record for these events, including the background material, delegate summary and notes of the discussions.

### **PARTICIPANTS**

- 1.12 Yorkshire Planning Aid targeted the three main Colleges within the Bradford District, namely Bradford, Shipley and Keighley Colleges.

- 1.13 Yorkshire Planning Aid held a series of workshop events at the 3 main colleges in Bradford, Shipley and Keighley. These were:

COLLEGE	DATE	ATTENDEES
Keighley College	9 <sup>th</sup> April 2008 (1)	10
Keighley College	9 <sup>th</sup> April 2008 (2)	7
Keighley College	21 <sup>st</sup> April 2008	7
Shipley College	23 <sup>rd</sup> April 2008 (1)	8
Shipley College	23 <sup>rd</sup> April 2008 (2)	12
Shipley College	29 <sup>th</sup> April 2008 (1)	10
Shipley College	29 <sup>th</sup> April 2008 (2)	12
Shipley College	29 <sup>th</sup> April 2008 (3)	19
Keighley College	6 <sup>th</sup> May 2008	10
Bradford College	14 <sup>th</sup> May 2008 (1)	7
Bradford College	14 <sup>th</sup> May 2008 (2)	5
Keighley College	22 <sup>nd</sup> May 2008	12

- 1.14 A total of 119 delegates plus 3 Yorkshire Planning Aid staff and volunteers attended the events.

#### **PROGRAMME**

- 1.15 The events took the form of group discussions; beginning with a brief introduction to the plan and a scene setting DVD presentation followed by discussion groups. The groups were asked where they lived then were asked to look at the positive and negative aspects of these areas. The discussion then moved onto the pro's and cons of additional housing and what would be best for their areas.

- 1.16 The notes of the discussions at each event are summarised in Section 3.0.

#### **DOCUMENTATION**

- 1.16 Copies of the Further Issues and Options Reports were available, these were:
1. Spatial Vision and Strategy
  2. Initial Sustainability Appraisal
  3. Draft Settlement Study
  4. Summary leaflet - Your District in 2026

## 2.0 PROGRAMME & FACILITATOR BRIEFING NOTES

---

**Bradford Core Strategy Further Issues & Options  
Bradford, Keighley & Shipley Colleges  
April/May 2008**

**Volunteer Briefing Note  
Approach to Tutor Groups/Topics for Discussion**

- Aim of sessions is to facilitate discussion on the 4 spatial options for growth put forward by the Further Issues & Options document. Level of consensus to be recorded (nb rough vote to be taken). Discussion also to be recorded.
  
- **Session Structure:-**
  - **Part 1 - Introduction**
  - **Part 2 – Where Do You Live - pros/cons**
  - **Part 3 – The Pros/Cons of having new housing**
  - **Part 4 - Core Strategy DVD**
  - **Part 5 – The 4 Options – what’s best for you/your area/Bradford**
  
- **Part 1 – Introduction (5 minutes)**
  - Introduce the session by: introducing yourselves; introducing YPA; explaining that these sessions are part of our role to give local people a voice in the future of their local areas, particularly those people whose voices don't always get heard (eg young people); introducing the Core Strategy as a strategy which will:-
    - distribute 50,000 new homes around Bradford District – to be built by 2026;
    - identify employment growth areas needed to support new population;
    - change face of Bradford over next 20 years.
  
- **Part 2 – Where Do You Live – pros/cons (10 minutes)**
  - Prepare a flip chart pro-forma with 3 columns – Place/Good/Bad
  - Go round group listing where each person lives.
  - Go round again asking each person for 1 'good thing' about where they live (prompt re housing, transport links, facilities, shops, open space, environment etc). Record next to place on flip chart.
  - go round asking each person for 1 'bad thing' about where they live. Record next to place on flip chart.

- Having gone round table, invite any additions to lists.
- Tear off sheet(s) & display completed sheets.

[NB Alternative approach is self-completion using flip chart sheets on walls and post-its]

➤ **Part 3 – The Pros & Cons of Having New Housing (10 minutes)**

- Display a pre-prepared flip chart listing pros/cons of having new housing within an area:  
Eg Pros – more jobs, more facilities, more housing choice, better transport links, more vibrant/exciting place to live.  
Eg Cons – bigger place, more people = more impersonal/less friendly, greater intensity of development, increased traffic, loss of greenspace +/- countryside.
- Get people to add more if they can & record any comments on core pros/cons
- Display completed sheet(s).

[NB Alternative approach is self-completion using flip chart sheets on walls and post-its]

➤ **Part 4 – Core Strategy DVD (10 minutes)**

- Introduce DVD as 'scene-setting' short film produced by Council, setting out 4 ideas for distributing the new homes around the district.

➤ **Part 5 – The 4 Options – what's best for you/your area/Bradford (25 minutes)**

- Discuss if new housing development could tackle the bad things and/or enhance/destroy the good things in their areas – establish the on balance view for each area
- Link to the 4 options & suggest any emerging matches between their views and options proposed (or elements of options proposed)
- Facilitate discussion on options
- Record support for each option and any consensus around particular options /elements of options

**Flip chart notes to be typed up and e-mailed to [mike.dando@planningaid.rtpi.org.uk](mailto:mike.dando@planningaid.rtpi.org.uk)**

### 3.0 SUMMARY OF WORKSHOP NOTES

#### Yorkshire Planning Aid

**Bradford Core Strategy Housing Options Workshops  
Bradford, Shipley & Keighley Colleges  
April - May 2008**

The groups were asked to state where they lived and suggest both good and bad things about their area. The table below summaries all the comments received regarding this question.

**Situation now**

Where I live	Good things	Bad things
City Centre	<ul style="list-style-type: none"> <li>• Lots of night clubs/pubs</li> <li>• Close to train stations</li> <li>• Central location</li> <li>• Many shops and things to do</li> </ul>	<ul style="list-style-type: none"> <li>• Noise</li> <li>• Never see neighbours</li> <li>• Drunks</li> </ul>
Great Horton	<ul style="list-style-type: none"> <li>• Friendly environment</li> <li>• Museum</li> <li>• Shops</li> <li>• Nice people</li> <li>• Lively</li> <li>• Transport is really good</li> <li>• Supermarket basically on doorstep &amp; a petrol station</li> </ul>	<ul style="list-style-type: none"> <li>• Would like more parks</li> <li>• Nicer semi - detached housing</li> <li>• Busy roads</li> <li>• Not many shops</li> <li>• Parking bad</li> <li>• Too much traffic</li> <li>• Dirty streets</li> <li>• Not many facilities for young and older women</li> <li>• Not many places for kids to go</li> </ul>
Little Horton	<ul style="list-style-type: none"> <li>• Friendly and helpful people</li> <li>• School, shops dentists etc all near by</li> <li>• Good transport</li> </ul>	<ul style="list-style-type: none"> <li>• Drugs</li> <li>• Crime</li> <li>• Rubbish</li> <li>• Mad car drivers</li> <li>• No nice houses</li> </ul>
Heaton	<ul style="list-style-type: none"> <li>• Quiet area / peaceful</li> <li>• Good bus services</li> <li>• Tourist attractions</li> <li>• Parks (lister)</li> <li>• Old buildings</li> </ul>	<ul style="list-style-type: none"> <li>• Community activities</li> <li>• Foolish behaviour</li> <li>• High crime rate</li> <li>• Drugs and crime</li> <li>• Rubbish council estate</li> </ul>

Local Development Framework for Bradford

	<ul style="list-style-type: none"> <li>• Character</li> <li>• Lots of schools in the area</li> <li>• Nice houses / great mix</li> <li>• Multi-cultural</li> <li>• Transport services</li> <li>• Small businesses</li> <li>• Integration</li> <li>• Heaton woods</li> </ul>	<ul style="list-style-type: none"> <li>• Not many jobs</li> <li>• Overcrowded</li> <li>• Feel unsafe</li> <li>• Not many doctors surgeries</li> <li>• Loud</li> <li>• Quite compact</li> <li>• Small park</li> <li>• High insurance</li> <li>• Speed bumps</li> <li>• 2 council estates</li> </ul>
Chellow Dean	<ul style="list-style-type: none"> <li>• Peaceful</li> <li>• Friendly</li> <li>• Shops</li> </ul>	<ul style="list-style-type: none"> <li>• Drugs</li> <li>• Crime</li> <li>• Messy streets</li> <li>• Graffiti</li> </ul>
Bradford 7	<ul style="list-style-type: none"> <li>• None</li> </ul>	<ul style="list-style-type: none"> <li>• Drugs &amp; prostitution</li> <li>• Pollution</li> <li>• No facilities</li> </ul>
Huddersfield Replied as Bradford 7	<ul style="list-style-type: none"> <li>• Quiet</li> <li>• Posh</li> <li>• Free town bus</li> </ul>	<ul style="list-style-type: none"> <li>• Drugs and crime</li> <li>• Too many asylum seekers</li> <li>• Not enough jobs</li> </ul>
Manningham	<ul style="list-style-type: none"> <li>• Multi-cultural society</li> <li>• Nice people</li> <li>• Shops &amp; good variety</li> <li>• Good jobs</li> <li>• Quiet area</li> <li>• Loads to see – Cartwright Hall</li> <li>• Schools</li> <li>• Parks</li> <li>• Close to city centre</li> <li>• Sports centres</li> </ul>	<ul style="list-style-type: none"> <li>• No parking</li> <li>• Not a lot of facilities</li> <li>• Kind of dirty</li> <li>• A lot of dealers</li> <li>• Litter</li> <li>• Vermin</li> </ul>
East Bowling	<ul style="list-style-type: none"> <li>• Lots of shops</li> <li>• Lots of parks</li> <li>• Small area</li> <li>• Swimming pools</li> </ul>	<ul style="list-style-type: none"> <li>• No places for jobs</li> <li>• A lot of traffic in places</li> </ul>
Marshfields	<ul style="list-style-type: none"> <li>• Good multi ethnic community</li> <li>• Shopping centre</li> </ul>	<ul style="list-style-type: none"> <li>• Crime</li> <li>• Litter</li> <li>• Not many sports facilities</li> </ul>

Local Development Framework for Bradford

	<ul style="list-style-type: none"> <li>• Good travel</li> </ul>	
West Bowling	<ul style="list-style-type: none"> <li>•</li> </ul>	<ul style="list-style-type: none"> <li>• Too many immigrants</li> <li>• People get shot / killed</li> <li>• Too many junkies</li> <li>• High crime rate</li> </ul>
Holmewood	<ul style="list-style-type: none"> <li>• Community</li> <li>• Shops</li> </ul>	<ul style="list-style-type: none"> <li>• Litter</li> <li>• Pollution</li> <li>• Chavs</li> </ul>
Lister Hills	<ul style="list-style-type: none"> <li>• Quiet</li> <li>• Multi culture community</li> <li>• Close to shops</li> <li>• Transport o.k.</li> </ul>	<ul style="list-style-type: none"> <li>• Vandalism</li> <li>• Property damaged</li> <li>• Noisy neighbours</li> <li>• Not many sports facilities</li> </ul>
Lidget Green	<ul style="list-style-type: none"> <li>• Snooker clubs</li> <li>• Clean</li> <li>• Good houses</li> <li>• Very friendly</li> <li>• Good neighbours</li> <li>• Multi – cultural</li> <li>• Good variety of shops</li> <li>• Fitness First gym</li> </ul>	<ul style="list-style-type: none"> <li>• Very busy and noisy</li> <li>• Drug dealers</li> <li>• Crime &amp; Vandalism</li> <li>• Thieves</li> <li>• Shootings</li> <li>• Snooker club</li> <li>• Litter</li> </ul>
Thornbury	<ul style="list-style-type: none"> <li>• Nice area</li> <li>• Good transport</li> <li>• Superstores</li> </ul>	<ul style="list-style-type: none"> <li>• Drugs</li> <li>• No sport centres</li> </ul>
Clayton	<ul style="list-style-type: none"> <li>• Pubs</li> <li>• Friendly</li> </ul>	<ul style="list-style-type: none"> <li>• Nothing to do for older children</li> </ul>
Thornton	<ul style="list-style-type: none"> <li>• Friends live close by</li> <li>• Friendly</li> <li>• Shops are close</li> <li>• Nice schools</li> <li>• Doctors/dentist in village</li> </ul>	<ul style="list-style-type: none"> <li>• Some parts are scruffy – graffiti</li> <li>• Too many immigrants</li> <li>• Fair few bungalows</li> </ul>
Undercliffe	<ul style="list-style-type: none"> <li>• Clean area</li> <li>• Quiet</li> <li>• Public transport connections</li> <li>• Lots of schools x2</li> <li>• Food markets quite near</li> <li>• Shops/fast food</li> <li>• Parks for outings x 2</li> </ul>	<ul style="list-style-type: none"> <li>• Noisy/loud</li> <li>• Too much congestion</li> <li>• Crowded</li> <li>• Burglars</li> </ul>

Local Development Framework for Bradford

	<ul style="list-style-type: none"> <li>• Multi cultural</li> <li>• Big houses</li> <li>• Library</li> </ul>	
Wrose	<ul style="list-style-type: none"> <li>• Small friendly village</li> <li>• Quite a few open spaces</li> <li>• Few shops for basic things</li> <li>• Co-op &amp; pub</li> </ul>	<ul style="list-style-type: none"> <li>• Chavs</li> <li>• Traffic in mornings</li> <li>• Not much business</li> <li>• No facilities for teenagers</li> </ul>
Denholme	<ul style="list-style-type: none"> <li>• Housing</li> <li>• Lots of open space</li> <li>• Nice views</li> </ul>	<ul style="list-style-type: none"> <li>• No places for jobs</li> <li>• Poor transport links</li> <li>• Poor services</li> </ul>
Shipley	<ul style="list-style-type: none"> <li>• Quiet</li> <li>• Friendly</li> <li>• Posh</li> <li>• Parking facilities</li> <li>• Variety of shops</li> <li>• Community</li> <li>• Jobs</li> <li>• Good place for football</li> <li>• Good views of houses</li> </ul>	<ul style="list-style-type: none"> <li>• City centre far way</li> <li>• Poor shops</li> <li>• Drugs and crime</li> <li>• Thieves</li> <li>• Vermin</li> <li>• Noisy</li> <li>• Police taking your details for playing football</li> </ul>
Windhill	<ul style="list-style-type: none"> <li>• Quiet &amp; friendly area</li> <li>• Park</li> <li>• Woods nearby</li> </ul>	<ul style="list-style-type: none"> <li>• Council estate near</li> <li>• No children's centres</li> </ul>
Saltaire	<ul style="list-style-type: none"> <li>• World Heritage site</li> <li>• Nice scenery</li> <li>• Housing</li> <li>• Transport</li> <li>• Community</li> <li>• Playing fields</li> <li>• Close to Shipley</li> <li>• No litter</li> <li>• Very quiet</li> <li>• Near shops and a few open spaces like fields</li> </ul>	<ul style="list-style-type: none"> <li>• Not enough jobs</li> <li>• Bad traffic at roundabout</li> <li>• Not enough facilities for young people</li> <li>• Full of tourists</li> </ul>
Bingley	<ul style="list-style-type: none"> <li>• Lots of pubs</li> </ul>	<ul style="list-style-type: none"> <li>•</li> </ul>
Cottingley, Bingley	<ul style="list-style-type: none"> <li>• Schools</li> <li>• None</li> <li>• Nice neighbourhood and</li> </ul>	<ul style="list-style-type: none"> <li>• Traffic</li> <li>• No affordable housing all for rich people</li> </ul>

Local Development Framework for Bradford

	area	<ul style="list-style-type: none"> <li>• Bad public transport</li> <li>• No pubs</li> <li>• Too many new houses and not enough facilities</li> </ul>
Wilsden	<ul style="list-style-type: none"> <li>• Housing – good size big gardens</li> <li>• Area quiet and friendly</li> <li>• Shops distant but many of them</li> <li>• Doctors &amp; dentist</li> <li>• Pharmacy</li> <li>• Schools</li> <li>• Cheap pubs</li> </ul>	<ul style="list-style-type: none"> <li>• Too quiet</li> <li>• Not much to do</li> <li>• Only two buses run through area</li> <li>• Only 1 shop</li> </ul>
Braithwaite, Keighley (2)	<ul style="list-style-type: none"> <li>• None</li> <li>• Community Centre with activities for disability groups</li> <li>• Shops</li> </ul>	<ul style="list-style-type: none"> <li>• Nothing to do</li> <li>• No pub</li> <li>• Lots of houses and nothing else</li> <li>• Street lighting very bad</li> <li>• Not safe</li> <li>• Drugs</li> </ul>
Cullingworth	<ul style="list-style-type: none"> <li>• Quiet</li> </ul>	<ul style="list-style-type: none"> <li>• None</li> </ul>
Oakworth, Keighley	<ul style="list-style-type: none"> <li>• Shops</li> <li>• Family live there</li> <li>• Co-op</li> <li>• 2 pubs</li> <li>• Park, sports clubs</li> </ul>	<ul style="list-style-type: none"> <li>• Rough area</li> <li>• Crime and drugs</li> </ul>
Long Lee, Keighley	<ul style="list-style-type: none"> <li>• Nothing</li> <li>• Green spaces</li> <li>• Quiet area</li> <li>• Shops – pub, fish shop, post office, shop</li> <li>• Doctors, chemist, 2 churches, community centre</li> </ul>	<ul style="list-style-type: none"> <li>• No pub</li> <li>• Nothing to do</li> <li>• Teenagers in gangs on streets</li> <li>• No community centre or activities</li> </ul>
Eldwick	<ul style="list-style-type: none"> <li>• Quiet</li> <li>• Nice</li> <li>• Open space</li> <li>• Baildon Moor</li> </ul>	<ul style="list-style-type: none"> <li>• Could be built on</li> <li>• Not a lot of facilities</li> </ul>
East Morton	<ul style="list-style-type: none"> <li>• Quiet</li> </ul>	<ul style="list-style-type: none"> <li>• Few shops / facilities</li> </ul>

Local Development Framework for Bradford

		<ul style="list-style-type: none"> <li>• Poor bus service</li> </ul>
Parkwood, Keighley	<ul style="list-style-type: none"> <li>• Close to friends</li> </ul>	<ul style="list-style-type: none"> <li>• Drug dealers</li> <li>• Rough area</li> <li>• Not nice people</li> </ul>
Riddlesden, Keighley	<ul style="list-style-type: none"> <li>• Good transport links</li> <li>• Good Co-op</li> </ul>	<ul style="list-style-type: none"> <li>• Smackheads</li> <li>• Trouble</li> </ul>
Springbank, Keighley	<ul style="list-style-type: none"> <li>• Nothing</li> </ul>	
Steeton	<ul style="list-style-type: none"> <li>▪ One good shop</li> <li>▪ Quiet</li> <li>▪ Lots of animals</li> <li>▪ Able to relax</li> </ul>	<ul style="list-style-type: none"> <li>▪ A lot of old people</li> <li>▪ Lonely</li> </ul>
Keighley, general	<ul style="list-style-type: none"> <li>▪ Good shops, better than Bradford as next to bus station</li> <li>▪ Cheap shops</li> <li>▪ Museum</li> <li>▪ Good transport links</li> <li>▪ Bus station (a bit small)</li> <li>▪ Station needs improving</li> <li>▪ Keighley College</li> <li>▪ McDonalds</li> <li>▪ 2 Greggs</li> <li>▪ Close community</li> <li>▪ Library</li> <li>▪ Quiet neighbourhood (Ingrow)</li> <li>▪ Cinemas</li> <li>▪ Takeaways</li> <li>▪ Near Hospital</li> </ul>	<ul style="list-style-type: none"> <li>▪ Nothing to do</li> <li>▪ Town centre bad quality</li> <li>▪ Leisure centre not central and expensive</li> <li>▪ Nothing cultural to do</li> <li>▪ Parking is a problem</li> <li>▪ Transport &amp; travel a problem at school times</li> <li>▪ Congestion</li> <li>▪ Variable residential areas</li> <li>▪ Crime / Drugs</li> <li>▪ Not feeling safe, esp at night</li> <li>▪ Chav town</li> <li>▪ Racism / gang wars</li> <li>▪ Hilly</li> <li>▪ Too many blocks of flats</li> <li>▪ Unsociable people</li> </ul>

Local Development Framework for Bradford

The students were then asked for their comments on the implications of building 50,000 new homes within the Bradford District. The table below summaries all the comments received to this question.

**Comments on implications of building 50000 homes**

<b>PRO'S</b>	<b>CON'S</b>
Housing choice	Overcrowding
More flats where students need them	Congestion (increased)
Affordable housing?	Will we be able to afford new housing, say in Ilkley?
Improved environment to cope with more housing	Make sure general mixed affordable housing FOR ALL
Build skyscrapers, build up and save ground	Too many small houses?
Can knock down old factories etc	Need to control who moves in
New / expanded communities	More pollution
More (better) facilities to meet needs of increased numbers or nothing to do as now and more trouble	More people - more crime
Multi cultural	Do not build on parks, use countryside first
Provide better transport links	Need better transport links
More jobs	What type of jobs and who for?
Better shopping malls etc	Could mean less jobs available
Houses prices will be cheaper for new buyers	Will not work if we do not have affordable and central leisure facilities to include swimming, ice skating, cinemas and youth centres
New faces	Lose green spaces / countryside
Community	Poor health services now, so what would 50000 more homes bring?
	Services for elderly are bad now and with an aging population this could make it worse
	Could be worse neighbourhoods. It depends on who moves in and where
	Poor views

**General comments:**

- New housing must be of **good quality and design** and blend in with existing character of area
- Only **build housing where people would want to live**, no point putting new houses in areas with bad name
- Build new housing **where it is needed** e.g. build new flats and studios near university for students, new homes for the elderly near existing facilities
- **Convert old mills** as now, but make them affordable for all
- Young people really would like the **choice** to buy a nice house and get a job
- If going to build on **green spaces, use countryside, not parks** as communities need parks locally
- **Do not build on green spaces**
- **Do not build on flood plains**
- Make sure **new facilities** are built with new housing/communities and reduce travel needs.
- Must have **schools** etc with houses, not isolated housing estates
- It is not just a case of building houses, there must be **total package of facilities and transport** to go with the houses or we will be no better off than we are now.
- Houses built to poor quality standards and that shops etc are never put with new houses
- No more housing in Baildon
- New housing should not be built without facilities for children and youths
- Look at crime rate before decided whether to build new houses on a piece of land

Within some of the group sessions some students were asked to vote on which spatial option they most agreed with. The table below outlines the results of this task.

**The Option vote**

Date	Option1	Option 2	Option 3	Option 4
9 <sup>th</sup> April 08 (1)	0	0	<b>10</b>	0
9 <sup>th</sup> April 08 (2)	0	<b>2</b>	<b>3</b>	<b>2</b>
21 <sup>st</sup> April 08	0	<b>1</b>	<b>5</b>	0
23 <sup>rd</sup> April 08	0	<b>10</b>	0	<b>2</b>
29 <sup>th</sup> April 08 (1)	<b>2</b>	<b>1</b>	<b>4</b>	<b>1</b>
29 <sup>th</sup> April 08 (2)	<b>1</b>	<b>2</b>	<b>7</b>	<b>1</b>
29 <sup>th</sup> April 08 (3)	0	<b>2</b>	<b>14</b>	<b>0</b>
14 <sup>th</sup> May 08 (1)	0	0	0	<b>7</b>
14 <sup>th</sup> May 08 (2)	0	<b>5</b>	0	0
<b>TOTALS</b>	<b>3</b>	<b>23</b>	<b>43</b>	<b>14</b>

**Comments:**

- Spread out development – 50% Bradford city & 50 % rest of area ( 23<sup>rd</sup> April – 1)
- Thornton is small and has limited growth potential ( 23<sup>rd</sup> April – 1)
- Development of land – order of preference:- ( 23<sup>rd</sup> April – 1)
  - Previously developed land
  - Old mills/factories – conversions
  - Green land
  - Greenspace important to protect
  - Countryside – some buildings in countryside
- Support for a new town within the Bradford area
- Can't change Saltaire ( 23<sup>rd</sup> April 08)
- Surprise that Ilkley was included as its out on a limb (29<sup>th</sup> April)
- Development of land – order of preference:- (6<sup>th</sup> May)
  - Cleared land – 8 for / 2 against
  - Mill conversions – 9 for / 0 against
  - Green space in towns – 2 for / 8 against
  - Countryside – 8 for / 1 against



Produced by the  
City of Bradford Metropolitan  
District Council

Local Development  
Framework Group

JULY 2008

