

CONSULTATION DOCUMENT

Oakbank School

Oakworth Road,
Keighley,
BD22 7DU

Ward: KEIGHLEY WEST

Head Teacher:

Chris Thompson

Current School Population:

1,825

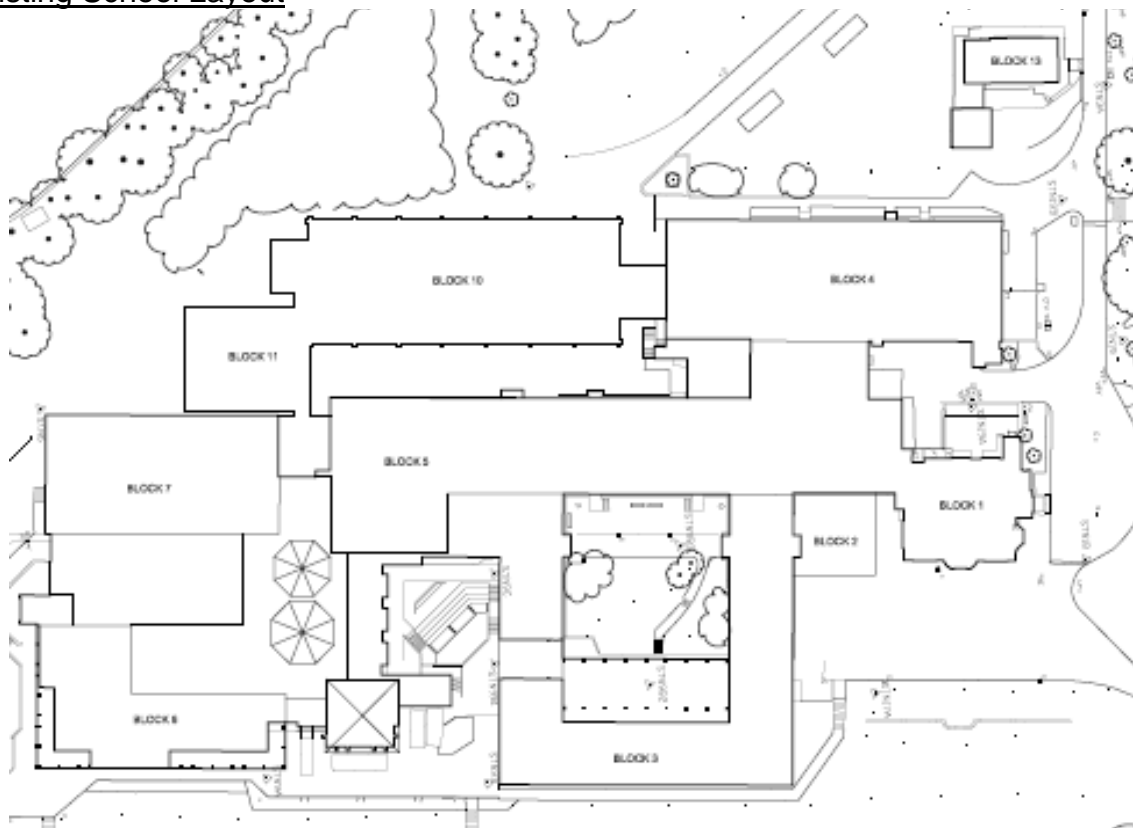
Anticipated School Population at 2018:

1,790

Priority Admission Area:

Details of the school's admission policy can be downloaded from the Education Bradford website (www.educationbradford.com) : "A guide for parents about admission arrangements to Secondary Schools 2009-2010"

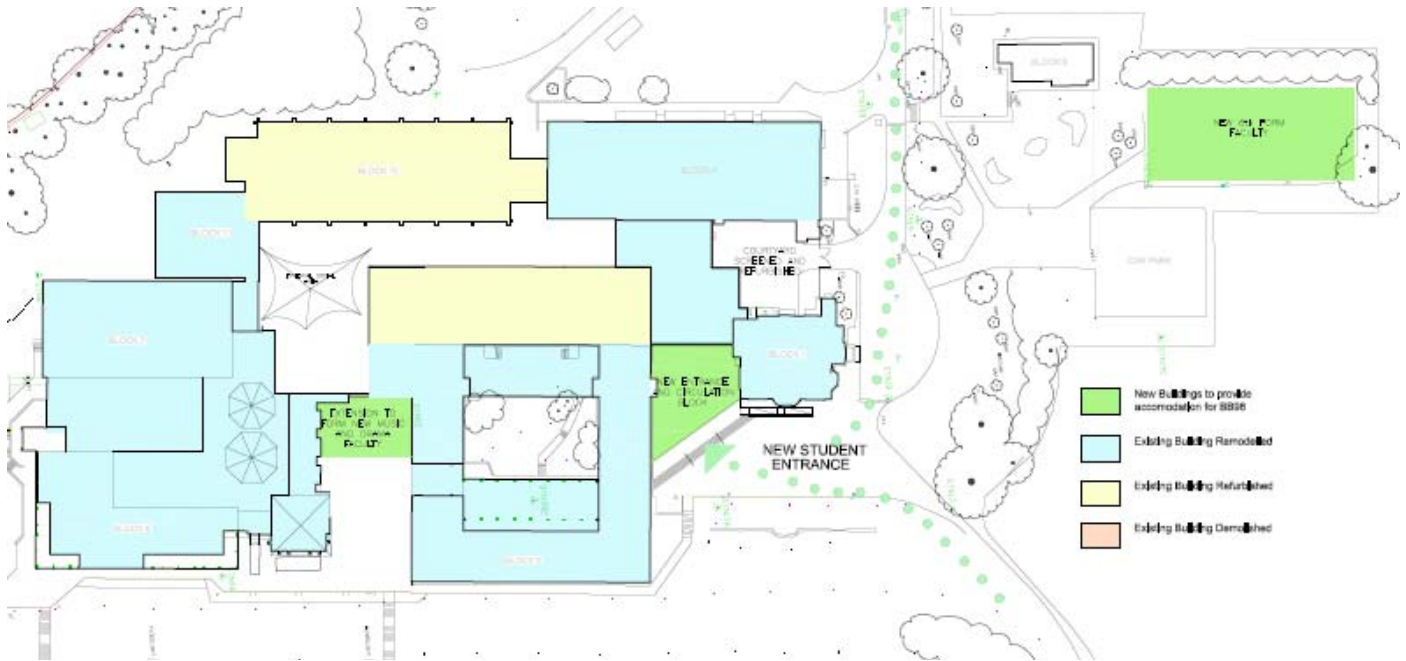
Existing School Layout



Please note that structural surveys and ground investigation surveys will be carried out at the school and/or other sites that are being proposed in the options below. These surveys will be carried out in the two week Easter holidays and non intrusive surveys being carried out at other times. Findings from these surveys will further inform our option appraisal.

OPTION 1

Option 1 proposes to refurbish and remodel existing accommodations and to build a new music and drama faculty, alongside a new school entrance and a separated new 6th form block (shown in green).



Advantages

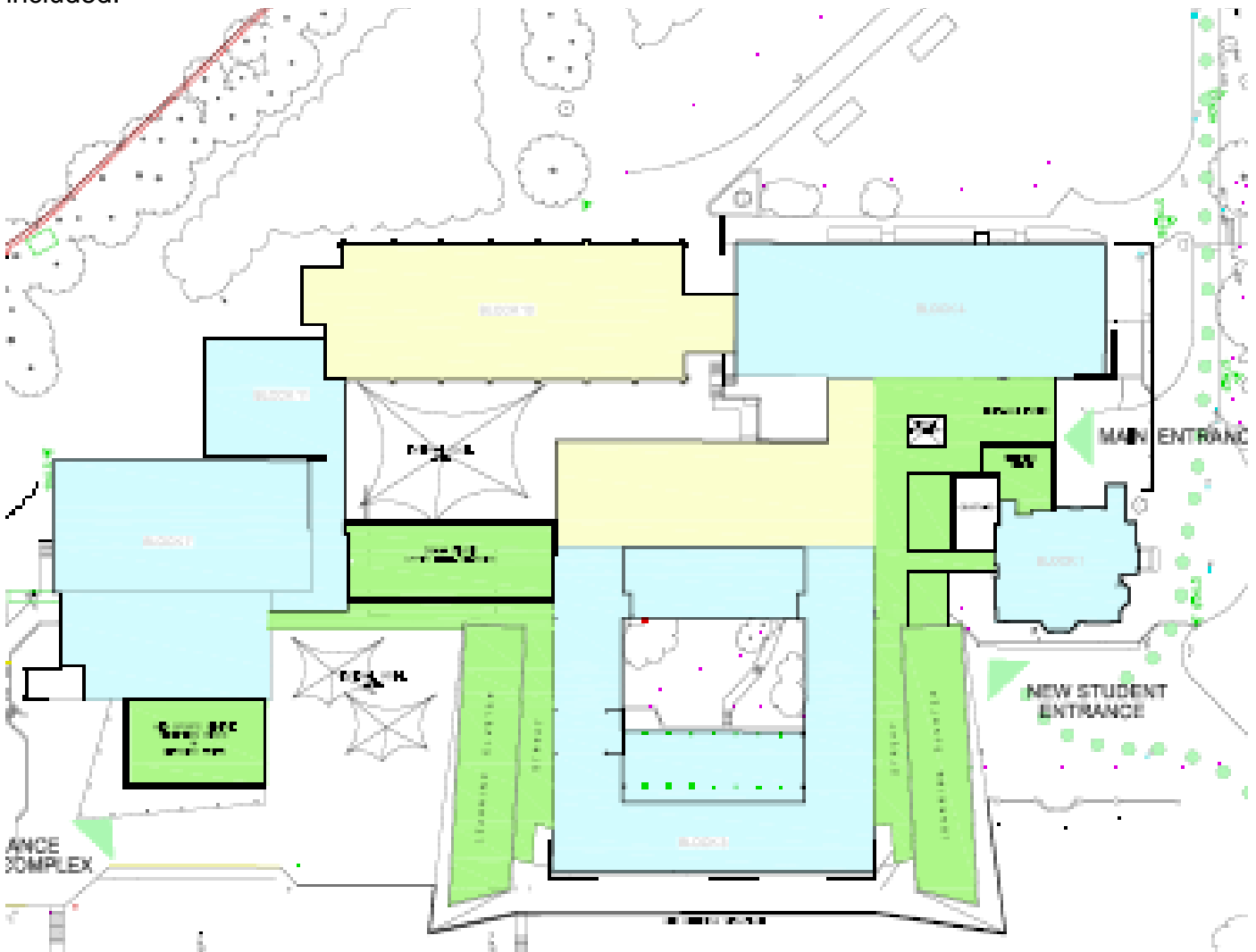
- No major issues from a planning perspective
- Development away from playing field will receive support from Sport England
- Careful phasing of the construction phase will be required to minimize any decanting requirements

Disadvantages

- DDA issues in the main building may be difficult to address
- A thorough grounds survey of the area is required to ensure the viability of this option.

OPTION 2

Option 2 proposes to demolish Block 6, remodel and refurbish other existing accommodations and to build new teaching spaces, dining area and kitchen on either sides of Block 3. New entrances to both the school and the sport hall would also be included.



Advantages

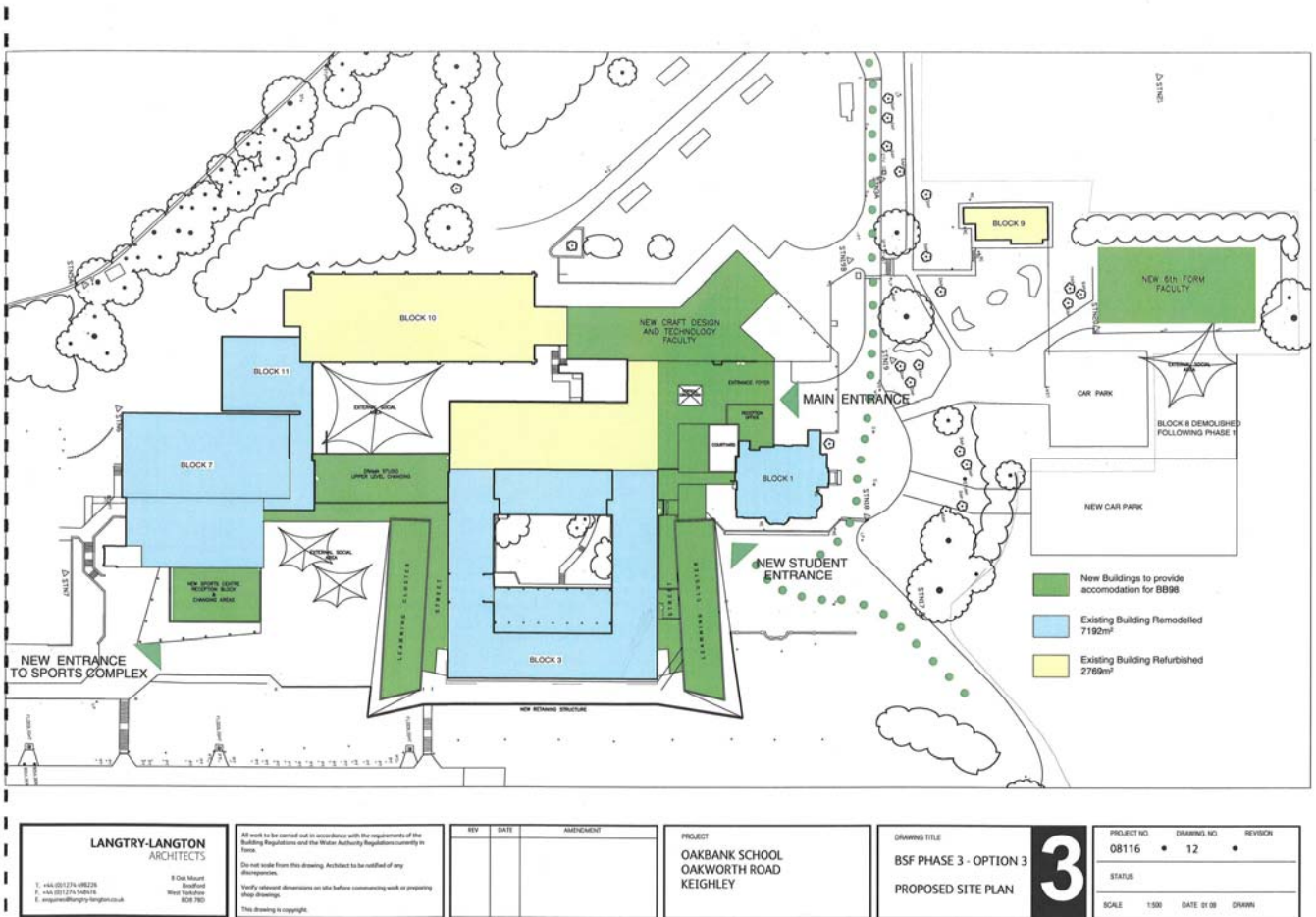
- No major issues from a planning perspective
- Development away from playing field will receive support from Sport England

Disadvantages

- DDA issues in the main building may be difficult to address
- Major decanting requirements
- A thorough grounds survey of the area is required to ensure the viability of this option.

OPTION 3

Option 3 is similar to Option 4 with the exception of an increased level of new build which would then include Block 4.



Advantages

- No major issues from a planning perspective
- Development away from playing field will receive support from Sport England

Disadvantages

- Major decanting requirements
- A thorough grounds survey of the area is required to ensure the viability of this option.

Building Schools for the Future Consultation Feedback

Bradford Council is keen to hear your opinion with regards to the proposed options put forward for the schools involved in the Building Schools for the Future (BSF) Phase 3 Programme and to seek your support and views on this exciting project.

Please complete this consultation questionnaire to let us know your views about the options available for **Oakbank School**.

1. **Please rank** your preferred option for the school by reference (i.e. option 1, 2 or 3):

Preferred option

Acceptable Option

3rd Choice

2. **Additional comments you wish to make:**



3. About yourself (please tick as applicable):

- Parent or carer of Primary school age child/ren
- Parent or carer of Secondary school age child/ren
- School Staff
- School Governor
- Member of the Local Community
- A pupil ([Primary school)
- A pupil (Secondary school)
- Other
- Please indicate your postcode

The consultation will end on Friday 3rd April. A summary analysis of responses will be subsequently produced which will inform the authority's decisions. These will be posted on the Bradford BSF website.

Should you have any queries about the consultation procedure please phone: 01274 437520.

Responses can be made:

By post to:
BSF Phase 3 Consultation
4th Floor, Merchants House
19 Peckover Street
BRADFORD BD1 5BD

By email to: merchants.house@bradford.gov.uk

By visiting our website: www.bradford.gov.uk/bsf

