

## CONSULTATION DOCUMENT

### Carlton Bolling College

Undercliffe Lane,  
Bradford,  
BD3 0DU

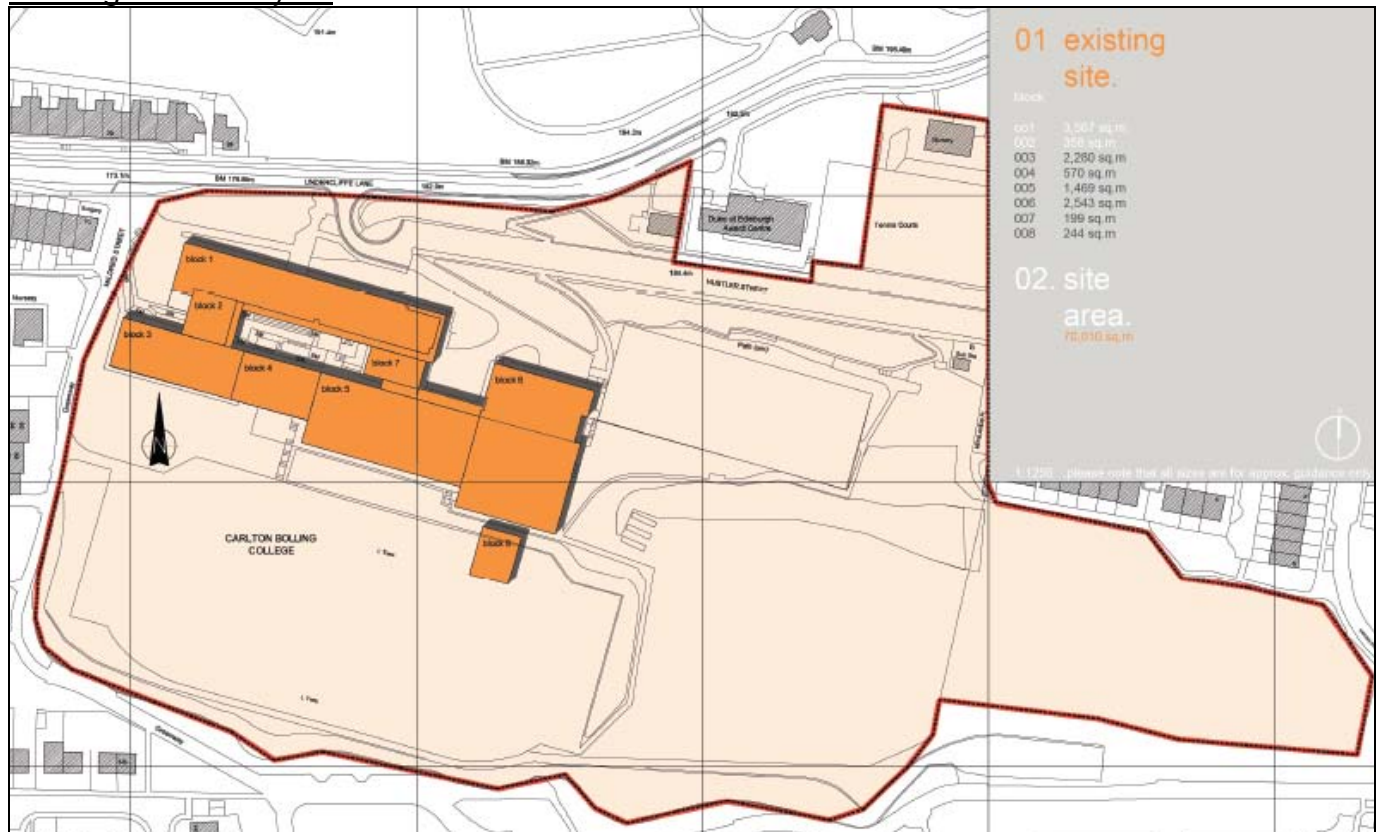
Ward: BOWLING AND BARKEREND

Head Teacher: Jackie Nellis

Current School Population: 1434  
Anticipated School Population at 2018: 1,750

Priority Admission Area: Details of the school's admission policy can be downloaded from the Education Bradford website ([www.educationbradford.com](http://www.educationbradford.com)) : "A guide for parents about admission arrangements to Secondary Schools 2009-2010"

### Existing School Layout



Please note that structural surveys and ground investigation surveys will be carried out at the school and/or other sites that are being proposed in the options below. These surveys will be carried out in the two week Easter holidays and non intrusive surveys being carried out at other times. Findings from these surveys will further inform our option appraisal.

## OPTION 1

Option 1 proposes to demolish the 1960s' accommodations and to build a new teaching block and main entrance next to the sport hall. The remaining of the school would be as is or refurbished.



### Advantages

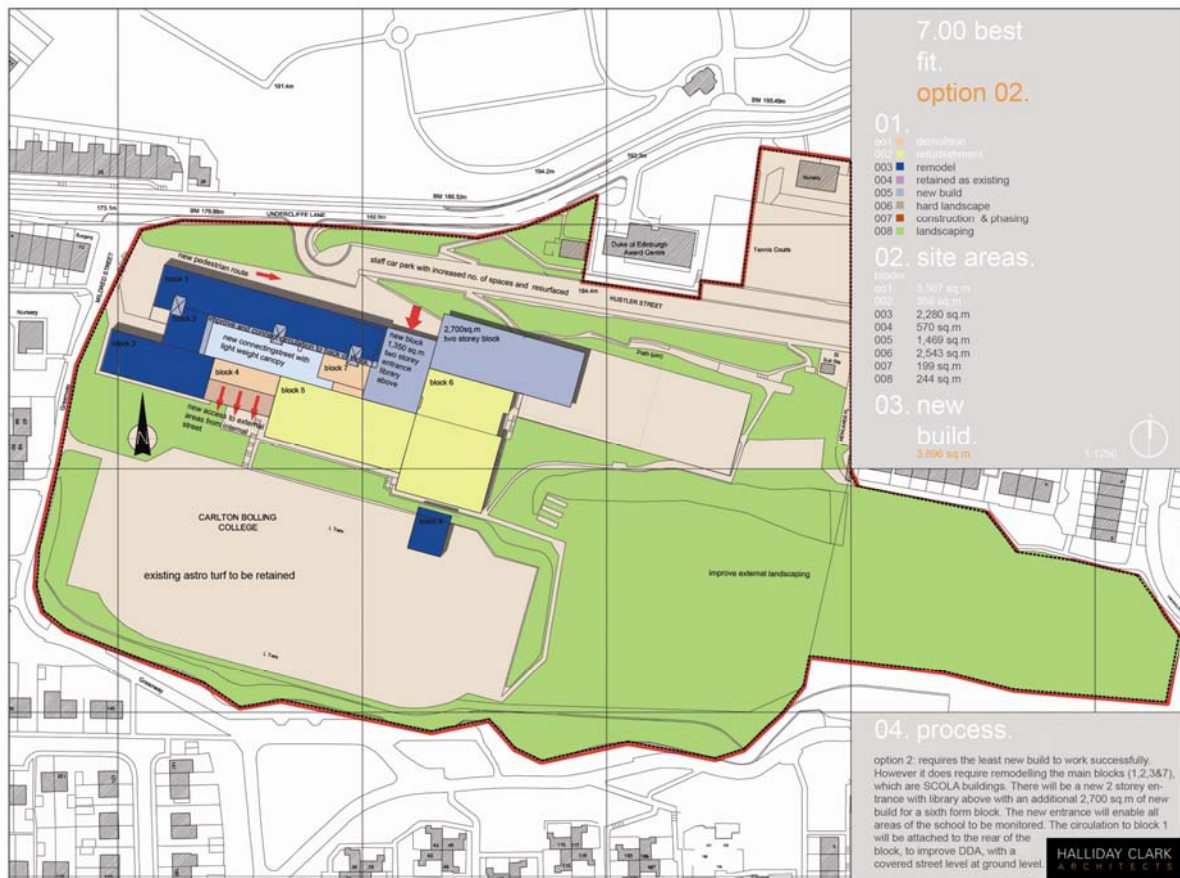
- No major issues from a planning perspective
- No implications from a Sport England perspective although there will be a need to demonstrate replacement like for like of outdoor sport facilities (hard surface play area)

### Disadvantages

- Need to relocate the City Learning Centre (CLC) at a cost not eligible under BSF
- A thorough grounds survey of the area is required to ensure the viability of this option.
- Some disruption as students will have to be relocated to enable block 1 to be demolished and block 2 to be refurbished

## OPTION 2

This option proposes to remodel Blocks 1, 2 and 3, refurbish Blocks 5 and 6. A new teaching block and reception would be created above the sport hall and a covered area/internal street created in between the different blocks.



### Advantages

- No major issues from a planning perspective
- No implications from a Sport England perspective although there will be a need to demonstrate replacement like for like of outdoor sport facilities (hard surface play area)

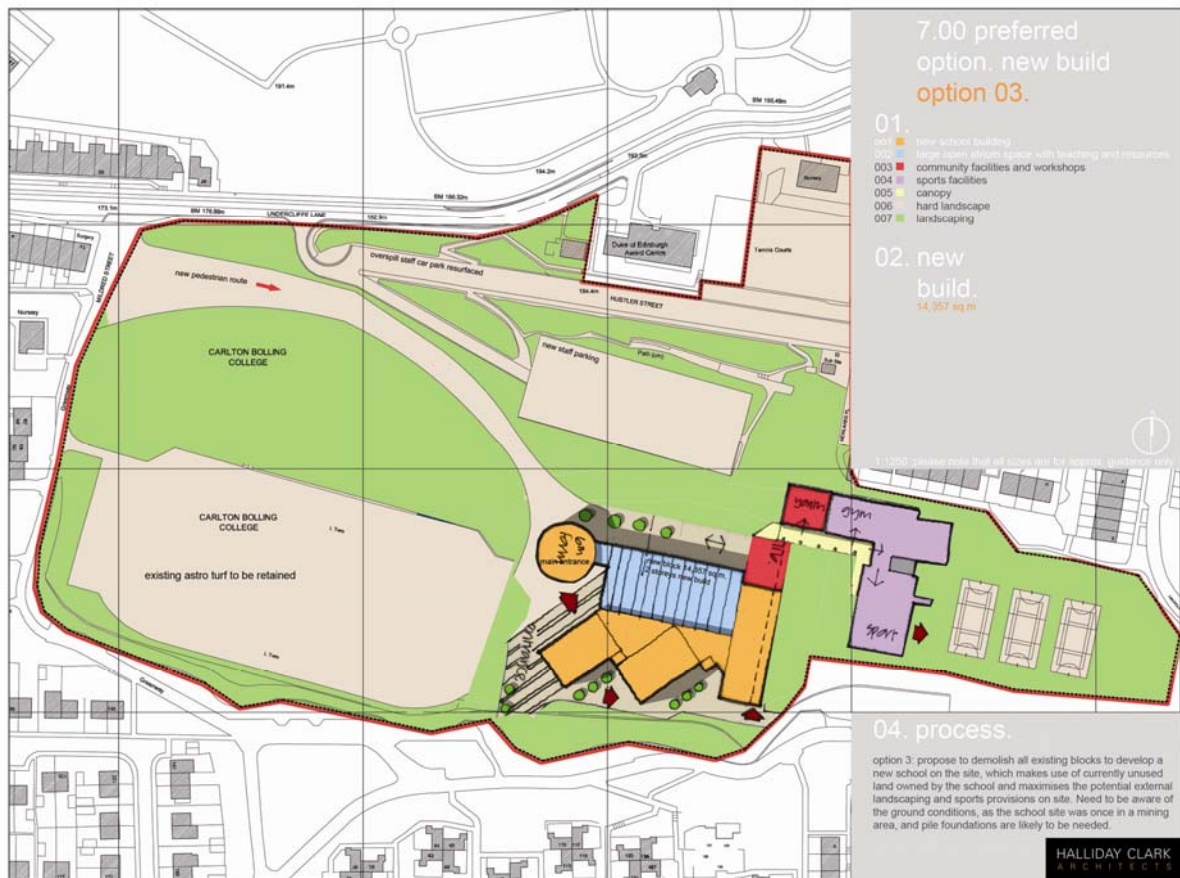
### Disadvantages

- A thorough grounds survey of the area is required to ensure the viability of this option.
- Potentially very disruptive as students will have to be located in temporary accommodation

## OPTION 3

Replacement of the school's accommodations with an entire new build.

Whilst an architect's option, the Local Authority is not considering an entire new school on this site.



### Advantages

- No major issues from a planning perspective
- Less disruptive as students will remain in original school building until work on new building is complete

### Disadvantages

- A thorough grounds survey of the area is required to ensure the viability of this option.
- Sport England will object to this option on the basis that it encroaches greatly on an area designated as a playing field, thus reducing outdoor sport facilities and their usage.

## Building Schools for the Future Consultation Feedback

Bradford Council is keen to hear your opinion with regards to the proposed options put forward for the schools involved in the Building Schools for the Future (BSF) Phase 3 Programme and to seek your support and views on this exciting project.

Please complete this consultation questionnaire to let us know your views about the options available for **Carlton Bolling College**.

1. **Please rank** your preferred option for the school by reference (i.e. option 1, 2 or 3):

Preferred option

Acceptable Option

3<sup>rd</sup> Choice

2. **Additional comments you wish to make:**



**3. About yourself (please tick as applicable):**

Parent or carer of Primary school age child/ren

Parent or carer of Secondary school age child/ren

School Staff

School Governor

Member of the Local Community

A pupil ([Primary school)

A pupil (Secondary school)

Other

Please indicate your postcode

**The consultation will end on Friday 3<sup>rd</sup> April. A summary analysis of responses will be subsequently produced which will inform the authority's decisions. These will be posted on the Bradford BSF website.**

Should you have any queries about the consultation procedure please phone: 01274 437520.

*Responses can be made:*

**By post to:**  
BSF Phase 3 Consultation  
4<sup>th</sup> Floor Merchants House  
19 Peckover Street  
BRADFORD BD1 5BD

**By email to:** [merchants.house@bradford.gov.uk](mailto:merchants.house@bradford.gov.uk)

**By visiting our website:** [www.bradford.gov.uk/bsf](http://www.bradford.gov.uk/bsf)

