

Domestic Gas Usage Data

Overview

As the UK starts to implement measure to produce less Carbon and achieve Net Zero

There is a big push for the UK to become totally independent of Gas imports, the following gas results have been adjusted for whether temperature with the aim of giving a balance picture of our usage.

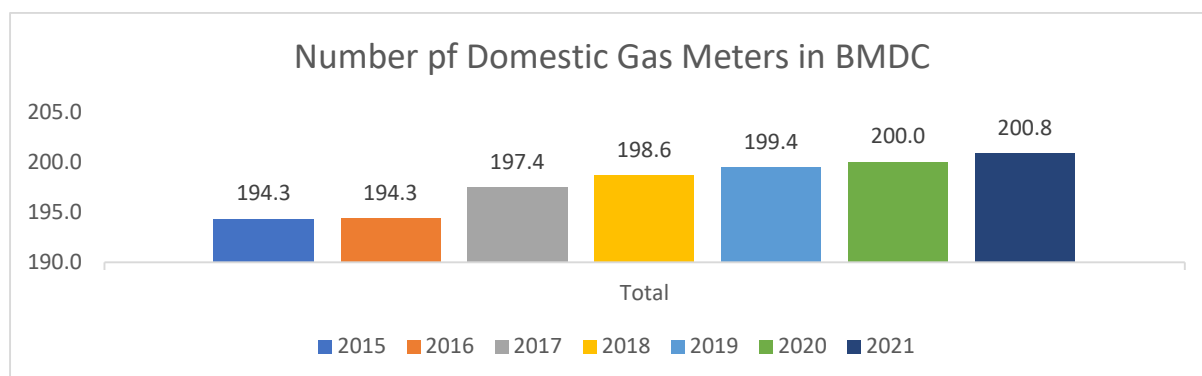
In addition to being reliant on gas for heating the UK also uses a high amount of gas for cooking. However unlike business usage, average domestic usage per meter can indicate how well domestic properties are insulated in a borough as well insulated properties will retain heat and reduce gas consumption.

Presently 40% of electricity is generated using Gas, the future intends to see more electricity being produced by other means including Wind and solar power.

Number of Gas Meters in Bradford from Year to Year

The below chart shows a steady increase in the number of domestic meters in BDMC with will indicate continued reliance of gas for new dwellings

The results are in (thousands)



Average consumption per meter in Yorkshire and Humber Region

The below results are in kWhs

Row Labels	2021
Bradford	15,121
Harrogate	14,997
Kirklees	14,402
Calderdale	14,338
Craven	14,088
Richmondshire	13,619
Sheffield	13,557
Leeds	13,507
East Riding of Yorkshire	13,416

York	13,314
Hambleton	13,136
Ryedale	13,054
North Lincolnshire	13,040
Doncaster	12,682
Rotherham	12,665
Scarborough	12,649
Selby	12,604
Barnsley	12,546
Wakefield	12,390
North East Lincolnshire	12,215
Kingston upon Hull, City of	11,506

Below is total domestic consumption for each Yorkshire and Humber Borough

Results are in GWh

(One Million) Kilowatthours to a GWh

Row Labels	2021
Leeds	4,250
Bradford	3,037
Sheffield	3,010
Kirklees	2,542
Wakefield	1,884
East Riding of Yorkshire	1,843
Doncaster	1,686
Rotherham	1,452
Barnsley	1,350
Kingston upon Hull, City of	1,315
Calderdale	1,261
York	1,067
Harrogate	918
North Lincolnshire	890
North East Lincolnshire	858
Scarborough	621
Selby	394
Hambleton	356
Craven	308
Ryedale	197
Richmondshire	178

Extra data such as Legue tables – Bradford Councils usage mapped against the UK can be found on the attached links

Foot Notes

This data has been extracted from the Government Statistics webpage

The data is currently published annually, latest information from the (Energy Efficiency Stats department) states “We haven’t pre-announced the next publication date yet, but this is likely to be end of December.”

Other statistics publications by the Department for Energy Security and Net Zero (DESNZ) can be found on the [DESNZ statistics homepage](#).

Heating your home

As an indication on how efficient a domestic living space is the below table shows the MEAN (average usage of a single meter) . The results are in KWh

Sum of Mean consumption per Meter		Results in KWh
Local Authority	Country or region	2021
Elmbridge	South East	18,212
East Renfrewshire	Scotland	17,274
Tandridge	South East	17,093
Harrow	Outer London	17,080
Mole Valley	South East	17,080
Barnet	Outer London	16,951
Waverley	South East	16,766
East Dunbartonshire	Scotland	16,637
Three Rivers	East	16,627
Surrey Heath	South East	16,509
Epsom and Ewell	South East	16,204
St Albans	East	16,044
Windsor and Maidenhead	South East	16,039
Brentwood	East	16,016
Hertsmere	East	15,929
Sevenoaks	South East	15,844
Reigate and Banstead	South East	15,837
Buckinghamshire	South East	15,778
Aberdeenshire	Scotland	15,681
Guildford	South East	15,657
Woking	South East	15,554
Epping Forest	East	15,501
Bromley	Outer London	15,456
Redbridge	Outer London	15,396
Hart	South East	15,389

Richmond upon Thames	Outer London	15,161
Brent	Outer London	15,157
Bradford	Yorkshire and The Humber	15,121
Argyll and Bute	Scotland	15,100
Derbyshire Dales	East Midlands	15,069
Runnymede	South East	15,035
Harrogate	Yorkshire and The Humber	14,997
Bromsgrove	West Midlands	14,926
Rutland	East Midlands	14,919
Trafford	North West	14,873
Rushcliffe	East Midlands	14,823
Stirling	Scotland	14,808
Tunbridge Wells	South East	14,797
Wokingham	South East	14,794
Solihull	West Midlands	14,658
Kingston upon Thames	Outer London	14,639
Uttlesford	East	14,635
Hillingdon	Outer London	14,609
Croydon	Outer London	14,606
Enfield	Outer London	14,548
Oadby and Wigston	East Midlands	14,528
Rossendale	North West	14,496
Birmingham	West Midlands	14,464
Kirklees	Yorkshire and The Humber	14,402
Stockport	North West	14,393
Perth and Kinross	Scotland	14,380
Harborough	East Midlands	14,361
Sutton	Outer London	14,339
Calderdale	Yorkshire and The Humber	14,338
Staffordshire Moorlands	West Midlands	14,321
High Peak	East Midlands	14,315
Ribble Valley	North West	14,302
East Hertfordshire	East	14,259
Dacorum	East	14,237
Rochford	East	14,226
Castle Point	East	14,198
Moray	Scotland	14,158
Leicester	East Midlands	14,141
South Lanarkshire	Scotland	14,134
Lichfield	West Midlands	14,123
Welwyn Hatfield	East	14,089
Craven	Yorkshire and The Humber	14,088
Luton	East	14,087
Ealing	Outer London	14,079
South Staffordshire	West Midlands	14,052
Watford	East	14,018

Merton	Outer London	14,005
South Oxfordshire	South East	14,002
Gedling	East Midlands	13,971
Blackburn with Darwen	North West	13,968
Hounslow	Outer London	13,962
Pendle	North West	13,901
Cheshire East	North West	13,900
East Hampshire	South East	13,891
Angus	Scotland	13,856
Newcastle upon Tyne	North East	13,849
Spelthorne	South East	13,847
Southend-on-Sea	East	13,831
South Ayrshire	Scotland	13,826
South Lakeland	North West	13,802
Fylde	North West	13,789
Wolverhampton	West Midlands	13,779
Havering	Outer London	13,771
Bury	North West	13,744
North Hertfordshire	East	13,715
Highland	Scotland	13,701
Oxford	South East	13,678
Merthyr Tydfil	Wales	13,676
West Lothian	Scotland	13,674
Cotswold	South West	13,642
Eden	North West	13,637
Newcastle-under-Lyme	West Midlands	13,631
Richmondshire	Yorkshire and The Humber	13,619
North East Derbyshire	East Midlands	13,583
Walsall	West Midlands	13,571
Bexley	Outer London	13,571
Fife	Scotland	13,566
Northumberland	North East	13,566
West Berkshire	South East	13,563
Sheffield	Yorkshire and The Humber	13,557
Wealden	South East	13,533
Blaby	East Midlands	13,508
Leeds	Yorkshire and The Humber	13,507
Scottish Borders	Scotland	13,490
Blaenau Gwent	Wales	13,471
Mid Sussex	South East	13,469
Rother	South East	13,451
West Lancashire	North West	13,441
Inverclyde	Scotland	13,438
Aberdeen City	Scotland	13,434
East Riding of Yorkshire	Yorkshire and The Humber	13,416
East Ayrshire	Scotland	13,412

Mansfield	East Midlands	13,403
Dumfries and Galloway	Scotland	13,401
North West Leicestershire	East Midlands	13,379
Bolton	North West	13,370
Warwick	West Midlands	13,365
Broxtowe	East Midlands	13,359
Amber Valley	East Midlands	13,359
Oldham	North West	13,357
Melton	East Midlands	13,353
Broxbourne	East	13,343
North Lanarkshire	Scotland	13,340
Winchester	South East	13,327
West Oxfordshire	South East	13,322
York	Yorkshire and The Humber	13,314
Copeland	North West	13,296
Stafford	West Midlands	13,293
Haringey	Inner London	13,280
North Warwickshire	West Midlands	13,271
Falkirk	Scotland	13,270
County Durham	North East	13,263
Allerdale	North West	13,258
Chelmsford	East	13,257
Rugby	West Midlands	13,247
Tonbridge and Malling	South East	13,231
North Tyneside	North East	13,213
Charnwood	East Midlands	13,212
South Cambridgeshire	East	13,210
Gateshead	North East	13,206
Newark and Sherwood	East Midlands	13,196
Darlington	North East	13,153
Sunderland	North East	13,144
Hambleton	Yorkshire and The Humber	13,136
East Lothian	Scotland	13,130
Hyndburn	North West	13,077
Horsham	South East	13,060
Ryedale	Yorkshire and The Humber	13,054
Vale of White Horse	South East	13,052
Hinckley and Bosworth	East Midlands	13,047
Sandwell	West Midlands	13,046
Slough	South East	13,046
Bracknell Forest	South East	13,040
North Lincolnshire	Yorkshire and The Humber	13,040
Dudley	West Midlands	13,024
West Lindsey	East Midlands	13,006
Stratford-on-Avon	West Midlands	12,988
Ashfield	East Midlands	12,970

Kensington and Chelsea	Inner London	12,962
Midlothian	Scotland	12,936
Rhondda Cynon Taf	Wales	12,933
Reading	South East	12,923
Sefton	North West	12,911
Cannock Chase	West Midlands	12,909
Burnley	North West	12,903
Caerphilly	Wales	12,897
Preston	North West	12,883
Wyre	North West	12,883
West Northamptonshire	East Midlands	12,864
Rochdale	North West	12,856
Waltham Forest	Outer London	12,847
Clackmannanshire	Scotland	12,829
Carlisle	North West	12,827
Chorley	North West	12,820
Cambridge	East	12,820
East Staffordshire	West Midlands	12,813
Maldon	East	12,813
Bath and North East Somerset	South West	12,812
Bedford	East	12,809
Bolsover	East Midlands	12,773
Chichester	South East	12,754
Stockton-on-Tees	North East	12,739
Canterbury	South East	12,736
Bassetlaw	East Midlands	12,726
Stoke-on-Trent	West Midlands	12,721
Coventry	West Midlands	12,716
Central Bedfordshire	East	12,715
Wandsworth	Inner London	12,702
Stroud	South West	12,690
Doncaster	Yorkshire and The Humber	12,682
Rotherham	Yorkshire and The Humber	12,665
Wirral	North West	12,661
Erewash	East Midlands	12,653
Scarborough	Yorkshire and The Humber	12,649
Nottingham	East Midlands	12,642
Lancaster	North West	12,636
New Forest	South East	12,631
Gravesham	South East	12,622
Derby	East Midlands	12,620
East Cambridgeshire	East	12,620
Selby	Yorkshire and The Humber	12,604
North Northamptonshire	East Midlands	12,603
Braintree	East	12,563
South Holland	East Midlands	12,561

Dundee City	Scotland	12,555
City of London	Inner London	12,546
Barnsley	Yorkshire and The Humber	12,546
Middlesbrough	North East	12,538
North Ayrshire	Scotland	12,529
Maidstone	South East	12,515
Malvern Hills	West Midlands	12,512
Renfrewshire	Scotland	12,503
Broadland	East	12,490
Rushmoor	South East	12,484
South Ribble	North West	12,482
South Kesteven	East Midlands	12,478
City of Edinburgh	Scotland	12,430
South Derbyshire	East Midlands	12,429
Swansea	Wales	12,425
Babergh	East	12,422
Greenwich	Outer London	12,415
Warrington	North West	12,407
Nuneaton and Bedworth	West Midlands	12,404
Colchester	East	12,403
Wakefield	Yorkshire and The Humber	12,390
Basildon	East	12,388
Boston	East Midlands	12,385
Camden	Inner London	12,373
Huntingdonshire	East	12,370
Redcar and Cleveland	North East	12,364
Hartlepool	North East	12,360
East Lindsey	East Midlands	12,359
Fenland	East	12,353
North Kesteven	East Midlands	12,338
Monmouthshire	Wales	12,337
Tendring	East	12,337
Cheshire West and Chester	North West	12,329
Milton Keynes	South East	12,324
South Tyneside	North East	12,319
Blackpool	North West	12,314
Bridgend	Wales	12,308
Salford	North West	12,296
Tameside	North West	12,287
Chesterfield	East Midlands	12,274
Cherwell	South East	12,262
Lewisham	Inner London	12,259
Carmarthenshire	Wales	12,253
Wyre Forest	West Midlands	12,244
North East Lincolnshire	Yorkshire and The Humber	12,215
Dartford	South East	12,208

Lewes	South East	12,202
Neath Port Talbot	Wales	12,181
Arun	South East	12,164
Manchester	North West	12,160
Basingstoke and Deane	South East	12,139
Na h-Eileanan Siar	Scotland	12,130
Thurrock	East	12,112
Wychavon	West Midlands	12,080
Vale of Glamorgan	Wales	12,057
Cheltenham	South West	12,055
King's Lynn and West Norfolk	East	12,053
Cardiff	Wales	12,046
Tamworth	West Midlands	12,024
East Suffolk	East	12,018
Newham	Inner London	12,008
North Norfolk	East	11,971
Shropshire	West Midlands	11,961
Wiltshire	South West	11,912
Ashford	South East	11,906
Ceredigion	Wales	11,875
Hammersmith and Fulham	Inner London	11,868
Peterborough	East	11,865
Bournemouth, Christchurch and Poole	South West	11,852
Fareham	South East	11,847
Redditch	West Midlands	11,844
Barking and Dagenham	Outer London	11,824
Stevenage	East	11,816
Swindon	South West	11,804
Medway	South East	11,792
Forest of Dean	South West	11,771
South Norfolk	East	11,763
Powys	Wales	11,744
Torfaen	Wales	11,741
Crawley	South East	11,740
Folkestone and Hythe	South East	11,726
West Devon	South West	11,725
West Suffolk	East	11,718
Dorset	South West	11,708
Lambeth	Inner London	11,701
Worthing	South East	11,700
Telford and Wrekin	West Midlands	11,683
Brighton and Hove	South East	11,664
Newport	Wales	11,643
St. Helens	North West	11,643
Wigan	North West	11,641

Liverpool	North West	11,639
Conwy	Wales	11,634
Ipswich	East	11,634
North Somerset	South West	11,609
Mendip	South West	11,604
Test Valley	South East	11,599
Thanet	South East	11,597
Swale	South East	11,594
Lincoln	East Midlands	11,594
Denbighshire	Wales	11,567
Herefordshire, County of	West Midlands	11,567
Kingston upon Hull, City of	Yorkshire and The Humber	11,506
Eastleigh	South East	11,504
Havant	South East	11,494
Flintshire	Wales	11,453
Hastings	South East	11,445
Worcester	West Midlands	11,443
Dover	South East	11,442
Tewkesbury	South West	11,439
Breckland	East	11,425
West Dunbartonshire	Scotland	11,422
Westminster	Inner London	11,402
Wrexham	Wales	11,394
Harlow	East	11,390
Bristol, City of	South West	11,332
East Devon	South West	11,308
Gwynedd	Wales	11,297
Barrow-in-Furness	North West	11,287
South Gloucestershire	South West	11,198
Pembrokeshire	Wales	11,154
Halton	North West	11,148
Gloucester	South West	11,115
South Hams	South West	11,097
Eastbourne	South East	11,079
Glasgow City	Scotland	11,069
Adur	South East	11,052
Mid Suffolk	East	11,016
Torbay	South West	10,986
Knowsley	North West	10,976
Southampton	South East	10,964
Norwich	East	10,926
Isle of Wight	South East	10,912
Isle of Anglesey	Wales	10,898
Great Yarmouth	East	10,896
North Devon	South West	10,890
Hackney	Inner London	10,852

South Somerset	South West	10,740
Teignbridge	South West	10,640
Somerset West and Taunton	South West	10,580
Southwark	Inner London	10,534
Portsmouth	South East	10,533
Islington	Inner London	10,470
Sedgemoor	South West	10,442
Mid Devon	South West	10,261
Torrige	South West	10,122
Exeter	South West	10,099
Gosport	South East	10,069
Cornwall	South West	9,887
Tower Hamlets	Inner London	9,352
Plymouth	South West	9,290

United Kingdom - Average Electricity Meter Consumption in KWh

The following tables show BDMC National position in UK regarding domestic Local Authority consumption.

Sum of Total consumption		Column Labels
Row Labels	Country or region	2021
Birmingham	West Midlands	5598.5
Leeds	Yorkshire and The Humber	4249.7
County Durham	North East	3068.3
Buckinghamshire	South East	3037.6
Bradford	Yorkshire and The Humber	3037.0
Sheffield	Yorkshire and The Humber	3009.8
Glasgow City	Scotland	2891.2
City of Edinburgh	Scotland	2796.5
Kirklees	Yorkshire and The Humber	2542.5
Liverpool	North West	2300.3
Fife	Scotland	2259.2
Cheshire East	North West	2227.7
Manchester	North West	2225.1
Barnet	Outer London	2175.7
Croydon	Outer London	2070.5
Bromley	Outer London	2021.0
West Northamptonshire	East Midlands	1963.5
North Lanarkshire	Scotland	1959.7
Bristol, City of	South West	1955.0
Bournemouth, Christchurch and Poole	South West	1899.9

Wakefield	Yorkshire and The Humber	1884.3
South Lanarkshire	Scotland	1871.6
Wiltshire	South West	1867.0
East Riding of Yorkshire	Yorkshire and The Humber	1842.9
North Northamptonshire	East Midlands	1794.7
Wirral	North West	1787.8
Cheshire West and Chester	North West	1768.0
Stockport	North West	1736.7
Northumberland	North East	1730.1
Dudley	West Midlands	1722.6
Cardiff	Wales	1688.1
Doncaster	Yorkshire and The Humber	1686.3
Leicester	East Midlands	1685.0
Ealing	Outer London	1666.8
Coventry	West Midlands	1665.9
Wigan	North West	1659.1
Sandwell	West Midlands	1631.0
Dorset	South West	1626.2
Sunderland	North East	1624.4
Newcastle upon Tyne	North East	1595.5
Enfield	Outer London	1577.7
Bolton	North West	1568.1
Sefton	North West	1546.5
Brent	Outer London	1538.5
Wandsworth	Inner London	1516.9
Nottingham	East Midlands	1475.3
Walsall	West Midlands	1467.1
Redbridge	Outer London	1454.1
Rotherham	Yorkshire and The Humber	1451.9
Hillingdon	Outer London	1450.6
Cornwall	South West	1444.4
Central Bedfordshire	East	1434.4
Harrow	Outer London	1431.4
Stoke-on-Trent	West Midlands	1405.4
Lambeth	Inner London	1387.4
Wolverhampton	West Midlands	1382.2
Rhondda Cynon Taf	Wales	1372.8
Aberdeen City	Scotland	1369.9
Trafford	North West	1367.5
Barnsley	Yorkshire and The Humber	1349.8
Havering	Outer London	1344.1
Lewisham	Inner London	1334.6

Milton Keynes	South East	1326.5
Derby	East Midlands	1323.0
Kingston upon Hull, City of	Yorkshire and The Humber	1315.3
Medway	South East	1280.8
Brighton and Hove	South East	1278.2
Swansea	Wales	1263.1
Calderdale	Yorkshire and The Humber	1261.4
North Tyneside	North East	1258.6
Haringey	Inner London	1257.7
Solihull	West Midlands	1257.1
Oldham	North West	1228.7
Bexley	Outer London	1217.4
Tameside	North West	1208.9
Salford	North West	1202.7
South Gloucestershire	South West	1199.4
Waltham Forest	Outer London	1193.8
Richmond upon Thames	Outer London	1176.8
Hounslow	Outer London	1176.0
Gateshead	North East	1167.2
Shropshire	West Midlands	1166.6
Rochdale	North West	1164.7
Greenwich	Outer London	1144.4
Warrington	North West	1111.7
Newham	Inner London	1102.8
East Suffolk	East	1095.2
Bury	North West	1091.7
Aberdeenshire	Scotland	1088.5
Stockton-on-Tees	North East	1080.1
Merton	Outer London	1074.0
West Lothian	Scotland	1070.1
York	Yorkshire and The Humber	1067.4
Swindon	South West	1053.0
Southwark	Inner London	1044.4
Sutton	Outer London	1033.8
Renfrewshire	Scotland	1029.2
Plymouth	South West	1028.7
Southend-on-Sea	East	1012.7
Luton	East	1006.3
Caerphilly	Wales	998.0
North Somerset	South West	995.2
Hackney	Inner London	978.8
Wokingham	South East	977.2
Charnwood	East Midlands	967.5
Elmbridge	South East	956.9

St. Helens	North West	949.5
Westminster	Inner London	945.9
Camden	Inner London	942.2
Peterborough	East	939.1
Harrogate	Yorkshire and The Humber	918.5
St Albans	East	907.2
Reigate and Banstead	South East	905.3
Falkirk	Scotland	904.7
Bath and North East Somerset	South West	904.3
Islington	Inner London	894.6
Windsor and Maidenhead	South East	893.9
New Forest	South East	890.8
North Lincolnshire	Yorkshire and The Humber	890.3
Telford and Wrekin	West Midlands	887.5
Southampton	South East	884.1
Kingston upon Thames	Outer London	883.3
Basildon	East	880.3
Hammersmith and Fulham	Inner London	874.5
Kensington and Chelsea	Inner London	860.9
South Tyneside	North East	859.4
North East Lincolnshire	Yorkshire and The Humber	858.0
Chelmsford	East	848.9
Dacorum	East	839.2
Bedford	East	835.9
Portsmouth	South East	833.3
Colchester	East	831.8
Huntingdonshire	East	826.0
Blackburn with Darwen	North West	824.0
Guildford	South East	817.0
Arun	South East	814.0
Waverley	South East	807.5
Maidstone	South East	806.4
Basingstoke and Deane	South East	793.8
Dundee City	Scotland	779.7
Blackpool	North West	776.7
Barking and Dagenham	Outer London	772.3
Bridgend	Wales	771.3
Middlesbrough	North East	770.2
Mid Sussex	South East	768.2
Canterbury	South East	763.7
Redcar and Cleveland	North East	763.4
Reading	South East	763.4
Warwick	West Midlands	759.9
East Dunbartonshire	Scotland	751.4

North Ayrshire	Scotland	751.1
Newport	Wales	750.8
Preston	North West	750.3
Epping Forest	East	749.8
East Hertfordshire	East	747.2
Neath Port Talbot	Wales	745.2
Amber Valley	East Midlands	736.2
East Ayrshire	Scotland	735.4
Knowsley	North West	732.3
Tendring	East	732.0
South Oxfordshire	South East	728.9
Thurrock	East	722.7
Wealden	South East	722.6
Rushcliffe	East Midlands	715.7
Perth and Kinross	Scotland	715.0
Ashfield	East Midlands	707.3
Lancaster	North West	705.6
Tower Hamlets	Inner London	705.5
Thanet	South East	703.8
Newcastle-under-Lyme	West Midlands	703.6
Gedling	East Midlands	702.3
Stafford	West Midlands	697.7
Oxford	South East	697.6
Nuneaton and Bedworth	West Midlands	689.3
South Cambridgeshire	East	666.2
North Hertfordshire	East	665.6
Swale	South East	665.1
Vale of White Horse	South East	663.8
Sevenoaks	South East	661.1
Flintshire	Wales	660.9
South Ayrshire	Scotland	660.2
Vale of Glamorgan	Wales	657.0
Mansfield	East Midlands	654.5
Horsham	South East	654.2
Tonbridge and Malling	South East	652.5
Carmarthenshire	Wales	652.4
Broxtowe	East Midlands	649.9
Hertsmere	East	646.3
West Berkshire	South East	645.0
Cherwell	South East	643.5
East Renfrewshire	Scotland	640.9
West Suffolk	East	640.8
Braintree	East	639.7
Norwich	East	638.6
Darlington	North East	637.9
Isle of Wight	South East	635.8

Newark and Sherwood	East Midlands	634.9
South Kesteven	East Midlands	633.7
Erewash	East Midlands	632.5
Eastleigh	South East	631.4
Highland	Scotland	631.3
East Hampshire	South East	630.0
Chorley	North West	624.7
Herefordshire, County of	West Midlands	624.4
Torbay	South West	623.7
Scarborough	Yorkshire and The Humber	621.3
Wyre	North West	619.2
Halton	North West	619.1
Welwyn Hatfield	East	618.4
North East Derbyshire	East Midlands	611.2
Dumfries and Galloway	Scotland	609.0
Ipswich	East	608.8
Cheltenham	South West	608.6
Bracknell Forest	South East	608.5
Hinckley and Bosworth	East Midlands	607.2
South Ribble	North West	604.9
Cambridge	East	604.5
West Lancashire	North West	602.5
Havant	South East	601.2
East Staffordshire	West Midlands	600.9
Slough	South East	599.3
Lichfield	West Midlands	598.8
South Staffordshire	West Midlands	596.7
Chesterfield	East Midlands	591.2
Rugby	West Midlands	587.1
Gloucester	South West	585.7
Wrexham	Wales	585.1
Angus	Scotland	583.7
Carlisle	North West	583.4
Tunbridge Wells	South East	582.4
Broadland	East	581.1
Three Rivers	East	579.9
Winchester	South East	577.3
Hart	South East	577.3
East Lothian	Scotland	577.1
Stroud	South West	576.3
Bromsgrove	West Midlands	575.5
South Lakeland	North West	570.7
Mole Valley	South East	570.0
East Devon	South West	569.1
Surrey Heath	South East	568.8

Bassetlaw	East Midlands	568.7
Blaby	East Midlands	568.6
High Peak	East Midlands	567.4
Stratford-on-Avon	West Midlands	567.1
Somerset West and Taunton	South West	560.9
South Somerset	South West	558.3
Woking	South East	556.6
Cannock Chase	West Midlands	553.6
Fareham	South East	553.0
North West Leicestershire	East Midlands	552.6
Tandridge	South East	549.1
Dover	South East	544.7
Wychavon	West Midlands	544.5
Conwy	Wales	542.0
South Derbyshire	East Midlands	541.2
Pendle	North West	539.8
Dartford	South East	536.7
Chichester	South East	527.8
Spelthorne	South East	526.5
Hartlepool	North East	525.8
Staffordshire Moorlands	West Midlands	522.3
Burnley	North West	519.4
Ashford	South East	518.7
Harborough	East Midlands	518.5
Teignbridge	South West	518.4
Midlothian	Scotland	517.2
Allerdale	North West	517.2
Scottish Borders	Scotland	516.2
East Lindsey	East Midlands	516.2
West Oxfordshire	South East	514.7
Worthing	South East	509.8
Folkestone and Hythe	South East	507.7
Gravesham	South East	504.9
Castle Point	East	504.8
Crawley	South East	500.8
North Kesteven	East Midlands	497.2
Wyre Forest	West Midlands	495.9
Stirling	Scotland	493.2
Test Valley	South East	491.6
Brentwood	East	490.1
Exeter	South West	488.2
Fylde	North West	487.5
Watford	East	486.2
Broxbourne	East	485.1
Torfaen	Wales	485.1
Epsom and Ewell	South East	480.9

Worcester	West Midlands	480.2
Lincoln	East Midlands	479.2
West Dunbartonshire	Scotland	478.6
Rochford	East	478.2
Inverclyde	Scotland	468.7
Runnymede	South East	468.6
Hyndburn	North West	467.3
Lewes	South East	463.7
Rother	South East	462.7
Mendip	South West	461.0
Rushmoor	South East	457.9
Eastbourne	South East	457.0
Bolsover	East Midlands	454.5
Moray	Scotland	451.5
King's Lynn and West Norfolk	East	448.5
Rossendale	North West	443.1
West Lindsey	East Midlands	439.0
Fenland	East	437.2
Hastings	South East	433.4
South Norfolk	East	431.8
Tewkesbury	South West	428.7
Blaenau Gwent	Wales	426.3
Redditch	West Midlands	423.9
Harlow	East	415.3
Sedgemoor	South West	412.7
Derbyshire Dales	East Midlands	408.1
Breckland	East	405.8
Pembrokeshire	Wales	402.4
Stevenage	East	401.6
Monmouthshire	Wales	396.1
Denbighshire	Wales	396.1
Uttlesford	East	395.5
Selby	Yorkshire and The Humber	394.5
South Holland	East Midlands	390.3
Tamworth	West Midlands	387.7
Copeland	North West	387.0
Cotswold	South West	384.3
Great Yarmouth	East	369.9
North Devon	South West	366.1
Barrow-in-Furness	North West	365.5
Merthyr Tydfil	Wales	359.9
Hambleton	Yorkshire and The Humber	355.8
Gwynedd	Wales	348.0
East Cambridgeshire	East	344.2

Powys	Wales	339.9
Ribble Valley	North West	338.0
North Warwickshire	West Midlands	335.9
Oadby and Wigston	East Midlands	335.6
North Norfolk	East	334.2
Babergh	East	331.0
Gosport	South East	326.0
Argyll and Bute	Scotland	312.7
Craven	Yorkshire and The Humber	308.5
South Hams	South West	306.3
Clackmannanshire	Scotland	300.6
Malvern Hills	West Midlands	295.1
Boston	East Midlands	294.0
Adur	South East	286.0
Forest of Dean	South West	277.9
Melton	East Midlands	258.1
Mid Suffolk	East	246.4
Maldon	East	234.6
Mid Devon	South West	223.3
Rutland	East Midlands	211.6
Ryedale	Yorkshire and The Humber	197.1
Isle of Anglesey	Wales	179.7
Richmondshire	Yorkshire and The Humber	177.7
Torrige	South West	170.0
West Devon	South West	169.3
Eden	North West	159.2
Ceredigion	Wales	106.6
City of London	Inner London	27.5